

GHRH Rabbit pAb

GHRH Rabbit pAb
Catalog # AP54186

Product Information

Application	IHC-P, IHC-F, IF
Primary Accession	P01286
Reactivity	Rat
Predicted	Human, Mouse, Pig
Host	Rabbit
Clonality	Polyclonal
Calculated MW	12447
Physical State	Liquid
Immunogen	KLH conjugated synthetic peptide derived from human GHRF
Epitope Specificity	32-59/103
Isotype	IgG
Purity	affinity purified by Protein A
Buffer	0.01M TBS (pH7.4) with 1% BSA, 0.02% Proclin300 and 50% Glycerol.
SUBCELLULAR LOCATION	Secreted.
SIMILARITY	Belongs to the glucagon family.
Important Note	This product as supplied is intended for research use only, not for use in human, therapeutic or diagnostic applications.
Background Descriptions	GHRF encoded by this gene belongs to the glucagon family and is a preproprotein that is produced in the hypothalamus. The preproprotein is cleaved to form a 44 aa factor, also called somatocrinin, that acts to stimulate growth hormone release from the pituitary. Variant receptors for somatocrinin have been found in several types of tumors, and antagonists of these receptors can inhibit the growth of the tumors. Defects in this gene are a cause of dwarfism, while hypersecretion of the encoded protein is a cause of gigantism.

Additional Information

Gene ID	2691
Other Names	Somatoliberin, Growth hormone-releasing factor, GRF, Growth hormone-releasing hormone, GHRH, Somatocrinin, Somatorelin, Sermorelin, GHRH, GHRF
Dilution	IHC-P=1:100-500,IHC-F=1:100-500,IF=1:100-500
Storage	Store at -20 °C for one year. Avoid repeated freeze/thaw cycles. When reconstituted in sterile pH 7.4 0.01M PBS or diluent of antibody the antibody is stable for at least two weeks at 2-4 °C.

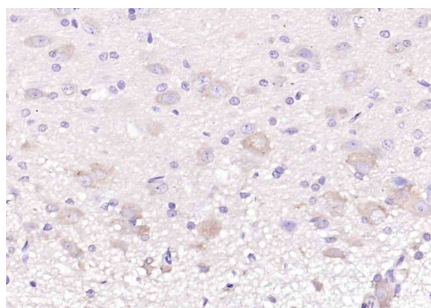
Protein Information

Name	GHRH
Synonyms	GHRF
Function	GRF is released by the hypothalamus and acts on the adenohypophyse to stimulate the secretion of growth hormone.
Cellular Location	Secreted.

Background

GHRF encoded by this gene belongs to the glucagon family and is a preproprotein that is produced in the hypothalamus. The preproprotein is cleaved to form a 44 aa factor, also called somatocrinin, that acts to stimulate growth hormone release from the pituitary. Variant receptors for somatocrinin have been found in several types of tumors, and antagonists of these receptors can inhibit the growth of the tumors. Defects in this gene are a cause of dwarfism, while hypersecretion of the encoded protein is a cause of gigantism.

Images



Paraformaldehyde-fixed, paraffin embedded (rat brain); Antigen retrieval by boiling in sodium citrate buffer (pH6.0) for 15min; Block endogenous peroxidase by 3% hydrogen peroxide for 20 minutes; Blocking buffer (normal goat serum) at 37°C for 30min; Antibody incubation with (GHRH) Polyclonal Antibody, Unconjugated (AP54186) at 1:200 overnight at 4°C, followed by operating according to SP Kit(Rabbit) (sp-0023) instructions and DAB staining.

Please note: All products are 'FOR RESEARCH USE ONLY. NOT FOR USE IN DIAGNOSTIC OR THERAPEUTIC PROCEDURES'.