

CRLS1 Antibody (C-term)

Affinity Purified Rabbit Polyclonal Antibody (Pab)

Catalog # AP5423b

Product Information

Application	IHC-P, WB, E
Primary Accession	Q9UJA2
Other Accession	Q5U2V5 , Q80ZM8 , NP_001120930.1 , NP_061968.1
Reactivity	Human
Predicted	Mouse, Rat
Host	Rabbit
Clonality	Polyclonal
Isotype	Rabbit IgG
Clone Names	RB26827
Calculated MW	32593
Antigen Region	198-226

Additional Information

Gene ID	54675
Other Names	Cardiolipin synthase, CLS, 278-, Protein GCD10 homolog, CRLS1, C20orf155, CLS1
Target/Specificity	This CRLS1 antibody is generated from rabbits immunized with a KLH conjugated synthetic peptide between 198-226 amino acids from the C-terminal region of human CRLS1.
Dilution	IHC-P~~1:100~500 WB~~1:1000 E~~Use at an assay dependent concentration.
Format	Purified polyclonal antibody supplied in PBS with 0.09% (W/V) sodium azide. This antibody is purified through a protein A column, followed by peptide affinity purification.
Storage	Maintain refrigerated at 2-8°C for up to 2 weeks. For long term storage store at -20°C in small aliquots to prevent freeze-thaw cycles.
Precautions	CRLS1 Antibody (C-term) is for research use only and not for use in diagnostic or therapeutic procedures.

Protein Information

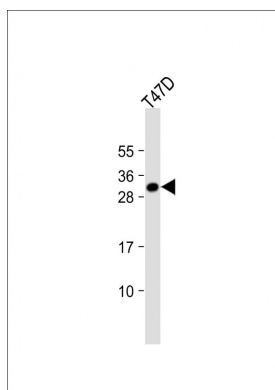
Name	CRLS1
Synonyms	C20orf155, CLS1

Function	Catalyzes the synthesis of cardiolipin (CL) (diphosphatidylglycerol) by specifically transferring a phosphatidyl group from CDP-diacylglycerol to phosphatidylglycerol (PG) (PubMed: 16547353 , PubMed: 16678169 , PubMed: 16716149 , PubMed: 35147173). CL is a key phospholipid in mitochondrial membranes and plays important roles in maintaining the functional integrity and dynamics of mitochondria under both optimal and stress conditions (PubMed: 35147173).
Cellular Location	Mitochondrion inner membrane; Multi-pass membrane protein
Tissue Location	Highly expressed in tissues such as heart, skeletal muscle and liver.

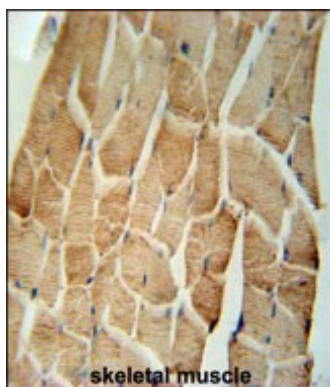
References

Garcia-Carrasco, M., et al. Clin Rev Allergy Immunol 36 (2-3), 104-108 (2009) :
Lee, J.L., et al. Clin Rev Allergy Immunol 36 (2-3), 126-130 (2009) :
Stojanovich, L., et al. Clin Rev Allergy Immunol 36 (2-3), 74-79 (2009) :
Miesbach, W. Clin Rev Allergy Immunol 36 (2-3), 91-97 (2009) :
Chen, D., et al. Biochem. J. 398(2):169-176(2006)
Lu, B., et al. J. Lipid Res. 47(6):1140-1145(2006)
Houtkooper, R.H., et al. FEBS Lett. 580(13):3059-3064(2006)
Oh, J.H., et al. Mamm. Genome 16(12):942-954(2005)
Johnson, E.M., et al. Nucleic Acids Res. 31(11):2915-2925(2003)
Deloukas, P., et al. Nature 414(6866):865-871(2001)

Images



Anti-CRLS1 Antibody (C-term) at 1:1000 dilution + T47D whole cell lysate Lysates/proteins at 20 µg per lane. Secondary Goat Anti-Rabbit IgG, (H+L), Peroxidase conjugated at 1/10000 dilution. Predicted band size : 33 kDa Blocking/Dilution buffer: 5% NFDM/TBST.



CRLS1 Antibody (C-term) (Cat. #AP5423b) immunohistochemistry analysis in formalin fixed and paraffin embedded human skeletal muscle followed by peroxidase conjugation of the secondary antibody and DAB staining. This data demonstrates the use of the CRLS1 Antibody (C-term) for immunohistochemistry. Clinical relevance has not been evaluated.