

# GCDFP15 Polyclonal Antibody

Purified Rabbit Polyclonal Antibody (Pab)

Catalog # AP54242

## Product Information

---

<b>Application</b>	WB, IHC-P, IHC-F, IF, ICC, E
<b>Primary Accession</b>	<a href="#">P12273</a>
<b>Reactivity</b>	Human, Mouse
<b>Host</b>	Rabbit
<b>Clonality</b>	Polyclonal
<b>Calculated MW</b>	16572
<b>Physical State</b>	Liquid
<b>Immunogen</b>	KLH conjugated synthetic peptide derived from mouse GCDFP15
<b>Epitope Specificity</b>	21-120/146
<b>Isotype</b>	IgG
<b>Purity</b>	affinity purified by Protein A
<b>Buffer</b>	0.01M TBS (pH7.4) with 1% BSA, 0.02% Proclin300 and 50% Glycerol.
<b>SUBCELLULAR LOCATION</b>	Secreted.
<b>SIMILARITY</b>	Belongs to the PIP family.
<b>SUBUNIT</b>	Monomer. Interacts with AZGP1.
<b>Important Note</b>	This product as supplied is intended for research use only, not for use in human, therapeutic or diagnostic applications.
<b>Background Descriptions</b>	Enables IgG binding activity; aspartic-type endopeptidase activity; and identical protein binding activity. Involved in several processes, including detection of chemical stimulus involved in sensory perception of bitter taste; negative regulation of T cell apoptotic process; and proteolysis. Located in extracellular space and nucleus. [provided by Alliance of Genome Resources, Apr 2022]

## Additional Information

---

<b>Gene ID</b>	5304
<b>Other Names</b>	Prolactin-inducible protein, Gross cystic disease fluid protein 15, GCDFP-15, Prolactin-induced protein, Secretory actin-binding protein, SABP, gp17, PIP, GCDFP15, GPIP4
<b>Target/Specificity</b>	Expressed in pathological conditions of the mammary gland and in several exocrine tissues, such as the lacrimal, salivary, and sweat glands.
<b>Dilution</b>	WB=1:500-2000,IHC-P=1:100-500,IHC-F=1:100-500,ICC=1:100-500,IF=1:100-500,ELISA=1:5000-10000
<b>Format</b>	0.01M TBS(pH7.4) with 1% BSA, 0.09% (W/V) sodium azide and 50% Glyce
<b>Storage</b>	Store at -20 °C for one year. Avoid repeated freeze/thaw cycles. When

reconstituted in sterile pH 7.4 0.01M PBS or diluent of antibody the antibody is stable for at least two weeks at 2-4 °C.

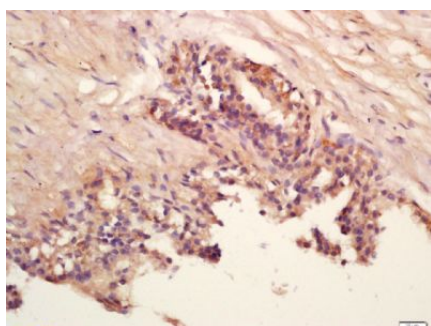
## Protein Information

---

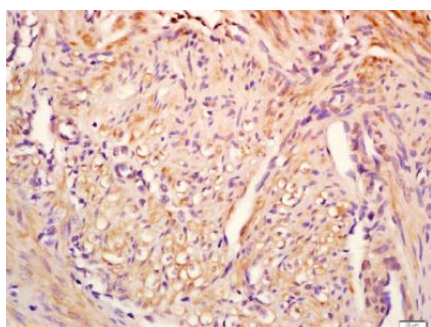
<b>Name</b>	PIP
<b>Synonyms</b>	GCDFP15, GPIP4
<b>Cellular Location</b>	Secreted.
<b>Tissue Location</b>	Expressed in pathological conditions of the mammary gland and in several exocrine tissues, such as the lacrimal, salivary, and sweat glands

## Images

---



Tissue/cell: human prostate tissue; 4%  
Paraformaldehyde-fixed and paraffin-embedded;  
Antigen retrieval: citrate buffer ( 0.01M, pH 6.0 ), Boiling  
bathing for 15min; Block endogenous peroxidase by 3%  
Hydrogen peroxide for 30min; Blocking buffer (normal  
goat serum,C-0005) at 37°C for 20 min;  
Incubation: Anti-GCDFP15 Polyclonal Antibody,  
Unconjugated(AP54242) 1:200, overnight at 4°C, followed  
by conjugation to the secondary antibody(SP-0023) and  
DAB(C-0010) staining



Tissue/cell: Human endometrium tissue; 4%  
Paraformaldehyde-fixed and paraffin-embedded;  
Antigen retrieval: citrate buffer ( 0.01M, pH 6.0 ), Boiling  
bathing for 15min; Block endogenous peroxidase by 3%  
Hydrogen peroxide for 30min; Blocking buffer (normal  
goat serum,C-0005) at 37°C for 20 min;  
Incubation: Anti-GCDFP15 Polyclonal Antibody,  
Unconjugated(AP54242) 1:200, overnight at 4°C, followed  
by conjugation to the secondary antibody(SP-0023) and  
DAB(C-0010) staining

Please note: All products are 'FOR RESEARCH USE ONLY. NOT FOR USE IN DIAGNOSTIC OR THERAPEUTIC PROCEDURES'.