

MYPN Rabbit pAb

MYPN Rabbit pAb
Catalog # AP54252

Product Information

Application	IHC-P, IHC-F, IF
Primary Accession	Q86TC9
Reactivity	Mouse, Rat
Predicted	Human, Chicken, Dog, Pig, Horse, Rabbit
Host	Rabbit
Clonality	Polyclonal
Calculated MW	145257
Physical State	Liquid
Immunogen	KLH conjugated synthetic peptide derived from human MYPN
Epitope Specificity	901-1000/1320
Isotype	IgG
Purity	affinity purified by Protein A
Buffer	0.01M TBS (pH7.4) with 1% BSA, 0.02% Proclin300 and 50% Glycerol.
SUBCELLULAR LOCATION	Cytoplasm. Nucleus. Cytoplasm, myofibril, sarcomere. Note=Bound to sarcomere both at the Z-line periphery and in the central I-band region.
SIMILARITY	Belongs to the myotilin/palladin family.Contains 5 Ig-like (immunoglobulin-like) domains.
SUBUNIT	Interacts with TTN/titin, NEB, NEBL, ACTN2 and CARP.
Important Note	This product as supplied is intended for research use only, not for use in human, therapeutic or diagnostic applications.
Background Descriptions	F-actin cross-linking protein which is thought to anchor actin to a variety of intracellular structures. This is a bundling protein.

Additional Information

Gene ID	84665
Other Names	Myopalladin, 145 kDa sarcomeric protein, MYPN, MYOP
Target/Specificity	Expressed in adult skeletal muscle and fetal heart.
Dilution	IHC-P=1:100-500,IHC-F=1:100-500,IF=1:100-500
Storage	Store at -20 °C for one year. Avoid repeated freeze/thaw cycles. When reconstituted in sterile pH 7.4 0.01M PBS or diluent of antibody the antibody is stable for at least two weeks at 2-4 °C.

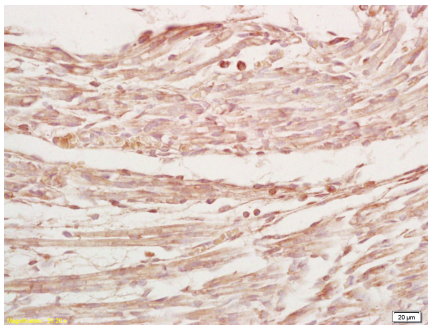
Protein Information

Name	MYPN
Synonyms	MYOP
Function	Component of the sarcomere that tethers together nebulin (skeletal muscle) and nebulette (cardiac muscle) to alpha-actinin, at the Z lines.
Cellular Location	Cytoplasm. Nucleus. Cytoplasm, myofibril, sarcomere. Cytoplasm, myofibril, sarcomere, Z line. Note=Bound to sarcomere both at the Z-line periphery and in the central I-band region.
Tissue Location	Expressed in adult skeletal muscle and fetal heart.

Background

F-actin cross-linking protein which is thought to anchor actin to a variety of intracellular structures. This is a bundling protein.

Images



Tissue/cell: Mouse embryos; 4% Paraformaldehyde-fixed and paraffin-embedded;
 Antigen retrieval: citrate buffer (0.01M, pH 6.0), Boiling bathing for 15min; Block endogenous peroxidase by 3% Hydrogen peroxide for 30min; Blocking buffer (normal goat serum,C-0005) at 37°C for 20 min;
 Incubation: Anti-MYPN Polyclonal Antibody, Unconjugated(AP54252) 1:200, overnight at 4°C, followed by conjugation to the secondary antibody(SP-0023) and DAB(C-0010) staining

Please note: All products are 'FOR RESEARCH USE ONLY. NOT FOR USE IN DIAGNOSTIC OR THERAPEUTIC PROCEDURES'.