

Myosin-10 Polyclonal Antibody

Purified Rabbit Polyclonal Antibody (Pab)

Catalog # AP54319

Product Information

| | |
|---|--|
| Application | IHC-P, IHC-F, IF, ICC, E |
| Primary Accession | P35580 |
| Reactivity | Rat, Pig, Bovine |
| Host | Rabbit |
| Clonality | Polyclonal |
| Calculated MW | 228999 |
| Physical State | Liquid |
| Immunogen | KLH conjugated synthetic peptide derived from human Myosin-10 |
| Epitope Specificity | 1651-1796/1796 |
| Isotype | IgG |
| Purity | affinity purified by Protein A |
| Buffer | 0.01M TBS (pH7.4) with 1% BSA, 0.02% Proclin300 and 50% Glycerol. |
| SUBCELLULAR LOCATION | Cell projection, lamellipodium. Note=Colocalizes with MCC at the leading edge of migrating cells. |
| SIMILARITY | Contains 1 IQ domain.Contains 1 myosin head-like domain. |
| SUBUNIT | Myosin is a hexameric protein that consists of 2 heavy chain subunits (MHC), 2 alkali light chain subunits (MLC) and 2 regulatory light chain subunits (MLC-2). Interacts with PLEKHG6. Interacts with ECM29. Interacts with KIF26B (By similarity). Interacts with LARP6. Interacts with MCC. |
| Post-translational modifications | Phosphorylated by ABL2 (By similarity). |
| Important Note | This product as supplied is intended for research use only, not for use in human, therapeutic or diagnostic applications. |

Additional Information

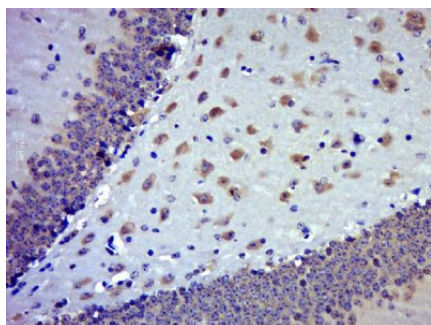
| | |
|---------------------------|--|
| Gene ID | 4628 |
| Other Names | Myosin-10, Cellular myosin heavy chain, type B, Myosin heavy chain 10, Myosin heavy chain, non-muscle Iib, Non-muscle myosin heavy chain B, NMMHC-B, Non-muscle myosin heavy chain Iib, NMMHC II-b, NMMHC-IIB, MYH10 |
| Target/Specificity | Isoform 1 is expressed in cerebellum and spinal chord. Isoform 2 is expressed in cerebrum and retina. Isoform 3 is expressed in the cerebrum and to a much lower extent in cerebellum. |
| Dilution | IHC-P=1:100-500,IHC-F=1:100-500,ICC=1:100-500,IF=1:100-500,ELISA=1:5000-10000 |
| Format | 0.01M TBS(pH7.4) with 1% BSA, 0.09% (W/V) sodium azide and 50% Glyce |

| | |
|----------------|---|
| Storage | Store at -20 °C for one year. Avoid repeated freeze/thaw cycles. When reconstituted in sterile pH 7.4 0.01M PBS or diluent of antibody the antibody is stable for at least two weeks at 2-4 °C. |
|----------------|---|

Protein Information

| | |
|--------------------------|---|
| Name | MYH10 |
| Function | Cellular myosin that appears to play a role in cytokinesis, cell shape, and specialized functions such as secretion and capping. Involved with LARP6 in the stabilization of type I collagen mRNAs for CO1A1 and CO1A2. During cell spreading, plays an important role in cytoskeleton reorganization, focal contacts formation (in the central part but not the margins of spreading cells), and lamellipodial extension; this function is mechanically antagonized by MYH9. |
| Cellular Location | Cell projection, lamellipodium Note=Colocalizes with MCC at the leading edge of migrating cells |
| Tissue Location | Isoform 1 is expressed in cerebellum and spinal chord. Isoform 2 is expressed in cerebrum and retina. Isoform 3 is expressed in the cerebrum and to a much lower extent in cerebellum |

Images



Paraformaldehyde-fixed, paraffin embedded (Mouse brain); Antigen retrieval by boiling in sodium citrate buffer (pH6.0) for 15min; Block endogenous peroxidase by 3% hydrogen peroxide for 20 minutes; Blocking buffer (normal goat serum) at 37°C for 30min; Antibody incubation with (Myosin-10) Polyclonal Antibody, Unconjugated (AP54319) at 1:500 overnight at 4°C, followed by a conjugated secondary (sp-0023) for 20 minutes and DAB staining.

Please note: All products are 'FOR RESEARCH USE ONLY. NOT FOR USE IN DIAGNOSTIC OR THERAPEUTIC PROCEDURES'.