

FAM84A Rabbit pAb

FAM84A Rabbit pAb

Catalog # AP54339

Product Information

Application	IHC-P, IHC-F, IF
Primary Accession	Q96KN4
Reactivity	Rat
Predicted	Human, Mouse, Chicken, Dog, Pig, Zebrafish
Host	Rabbit
Clonality	Polyclonal
Calculated MW	32491
Physical State	Liquid
Immunogen	KLH conjugated synthetic peptide derived from human NSE1/FAM84A
Epitope Specificity	151-250/292
Isotype	IgG
Purity	affinity purified by Protein A

Buffer 0.01M TBS (pH7.4) with 1% BSA, 0.02% Proclin300 and 50% Glycerol.

SIMILARITY Belongs to the FAM84 family.

Post-translational modifications Isoform 2 is phosphorylated.

Important Note This product as supplied is intended for research use only, not for use in human, therapeutic or diagnostic applications.

Background Descriptions FAM84A is a 292 amino acid protein that belongs to the FAM84 family of proteins. Predominantly expressed in testis, FAM84A shares 44% amino acid identity with the related protein FAM84B. FAM84A localizes to a subcellular membrane region where there is no contact between neighboring cells and is believed to play a role in cell morphology and motility. More specifically, the expression of FAM84A increases cell motility. Two FAM84A isoforms are expressed due to alternative splicing events. Isoform 2 can be phosphorylated on various serine residues and this phosphorylation is associated with cellular morphology. FAM84A is upregulated in colorectal cancer, lung cancer, pancreatic cancer, cholangiocarcinoma and bladder cancer tissues. Via its ability to increase cell motility, FAM84A may contribute to the invasion and metastasis of cancer cells.

Additional Information

Gene ID	151354
Other Names	Protein LRATD1, LRAT domain-containing 1 {ECO:0000312 HGNC:HGNC:20743}, Neurologic sensory protein 1, NSE1, Protein FAM84A, LRATD1 (HGNC:20743), FAM84A, NSE1
Dilution	IHC-P=1:100-500,IHC-F=1:100-500,IF=1:100-500

Storage

Store at -20 °C for one year. Avoid repeated freeze/thaw cycles. When reconstituted in sterile pH 7.4 0.01M PBS or diluent of antibody the antibody is stable for at least two weeks at 2-4 °C.

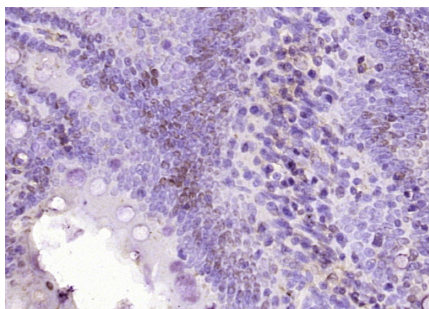
Protein Information

Name	LRATD1 (HGNC:20743)
Synonyms	FAM84A, NSE1
Function	May play a role in cell morphology and motility.
Cellular Location	Cytoplasm.
Tissue Location	Only detected in testis. Highly expressed in colon cancer cells.

Background

FAM84A is a 292 amino acid protein that belongs to the FAM84 family of proteins. Predominantly expressed in testis, FAM84A shares 44% amino acid identity with the related protein FAM84B. FAM84A localizes to a subcellular membrane region where there is no contact between neighboring cells and is believed to play a role in cell morphology and motility. More specifically, the expression of FAM84A increases cell motility. Two FAM84A isoforms are expressed due to alternative splicing events. Isoform 2 can be phosphorylated on various serine residues and this phosphorylation is associated with cellular morphology. FAM84A is upregulated in colorectal cancer, lung cancer, pancreatic cancer, cholangiocarcinoma and bladder cancer tissues. Via its ability to increase cell motility, FAM84A may contribute to the invasion and metastasis of cancer cells.

Images



Paraformaldehyde-fixed, paraffin embedded (rat rectum); Antigen retrieval by boiling in sodium citrate buffer (pH6.0) for 15min; Block endogenous peroxidase by 3% hydrogen peroxide for 20 minutes; Blocking buffer (normal goat serum) at 37°C for 30min; Antibody incubation with (FAM84A) Polyclonal Antibody, Unconjugated (AP54339) at 1:200 overnight at 4°C, followed by operating according to SP Kit(Rabbit) (sp-0023) instructions and DAB staining.

Please note: All products are 'FOR RESEARCH USE ONLY. NOT FOR USE IN DIAGNOSTIC OR THERAPEUTIC PROCEDURES'.