

SPRR3 Rabbit pAb

SPRR3 Rabbit pAb
Catalog # AP54409

Product Information

Application	IHC-P, IHC-F, IF
Primary Accession	Q9UBC9
Reactivity	Human
Predicted	Mouse, Rat
Host	Rabbit
Clonality	Polyclonal
Calculated MW	18154
Physical State	Liquid
Immunogen	KLH conjugated synthetic peptide derived from human SPRR3/Cornifin B
Epitope Specificity	21-100/169
Isotype	IgG
Purity	affinity purified by Protein A
Buffer	0.01M TBS (pH7.4) with 1% BSA, 0.02% Proclin300 and 50% Glycerol.
SUBCELLULAR LOCATION	Cytoplasm.
SIMILARITY	Belongs to the cornifin (SPRR) family.
SUBUNIT	Belongs to the cornifin (SPRR) family.
Important Note	This product as supplied is intended for research use only, not for use in human, therapeutic or diagnostic applications.
Background Descriptions	Predicted to enable structural molecule activity. Predicted to be involved in wound healing. Located in Golgi apparatus and perinuclear region of cytoplasm. [provided by Alliance of Genome Resources, Apr 2022]

Additional Information

Gene ID	6707
Other Names	Small proline-rich protein 3, 22 kDa pancornulin, Cornifin beta, Esophagin, SPRR3, SPRC
Dilution	IHC-P=1:100-500,IHC-F=1:100-500,IF=1:100-500
Storage	Store at -20 °C for one year. Avoid repeated freeze/thaw cycles. When reconstituted in sterile pH 7.4 0.01M PBS or diluent of antibody the antibody is stable for at least two weeks at 2-4 °C.

Protein Information

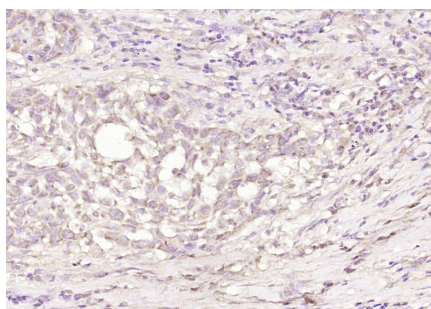
Name	SPRR3
-------------	-------

Synonyms	SPRC
Function	Cross-linked envelope protein of keratinocytes.
Cellular Location	Cytoplasm.

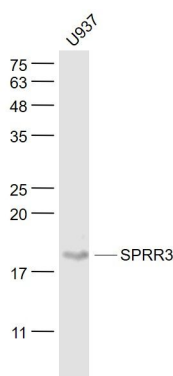
Background

Predicted to enable structural molecule activity. Predicted to be involved in wound healing. Located in Golgi apparatus and perinuclear region of cytoplasm. [provided by Alliance of Genome Resources, Apr 2022]

Images



Paraformaldehyde-fixed, paraffin embedded (Human esophageal cancer); Antigen retrieval by boiling in sodium citrate buffer (pH6.0) for 15min; Block endogenous peroxidase by 3% hydrogen peroxide for 20 minutes; Blocking buffer (normal goat serum) at 37°C for 30min; Antibody incubation with (SPRR3) Polyclonal Antibody, Unconjugated (AP54409) at 1:400 overnight at 4°C, followed by operating according to SP Kit(Rabbit) (sp-0023) instructions and DAB staining.



Sample:
 U937(Human) Cell Lysate at 30 ug
 Primary: Anti- SPRR3 (AP54409) at 1/1000 dilution
 Secondary: IRDye800CW Goat Anti-Rabbit IgG at 1/20000 dilution
 Predicted band size: 18 kD
 Observed band size: 18 kD

Please note: All products are 'FOR RESEARCH USE ONLY. NOT FOR USE IN DIAGNOSTIC OR THERAPEUTIC PROCEDURES'.