

LSP1 Antibody (Center)

Affinity Purified Rabbit Polyclonal Antibody (Pab)

Catalog # AP5442c

Product Information

Application	WB, IHC-P, FC, E
Primary Accession	P33241
Other Accession	NP_002330
Reactivity	Human
Host	Rabbit
Clonality	Polyclonal
Isotype	Rabbit IgG
Clone Names	RB20589
Calculated MW	37192
Antigen Region	108-134

Additional Information

Gene ID	4046
Other Names	Lymphocyte-specific protein 1, 47 kDa actin-binding protein, 52 kDa phosphoprotein, pp52, Lymphocyte-specific antigen WP34, LSP1, WP34
Target/Specificity	This LSP1 antibody is generated from rabbits immunized with a KLH conjugated synthetic peptide between 108-134 amino acids from the Central region of human LSP1.
Dilution	WB~~1:1000 IHC-P~~1:100~500 FC~~1:10~50 E~~Use at an assay dependent concentration.
Format	Purified polyclonal antibody supplied in PBS with 0.09% (W/V) sodium azide. This antibody is purified through a protein A column, followed by peptide affinity purification.
Storage	Maintain refrigerated at 2-8°C for up to 2 weeks. For long term storage store at -20°C in small aliquots to prevent freeze-thaw cycles.
Precautions	LSP1 Antibody (Center) is for research use only and not for use in diagnostic or therapeutic procedures.

Protein Information

Name	LSP1
Synonyms	WP34

Function	May play a role in mediating neutrophil activation and chemotaxis.
Cellular Location	Cell membrane; Peripheral membrane protein; Cytoplasmic side
Tissue Location	Activated T-lymphocytes.

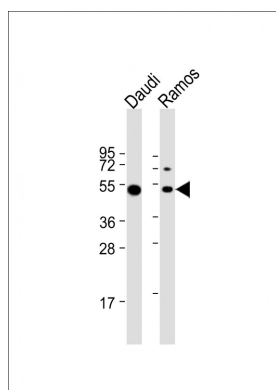
Background

LSP1 is an intracellular F-actin binding protein. The protein is expressed in lymphocytes, neutrophils, macrophages, and endothelium and may regulate neutrophil motility, adhesion to fibrinogen matrix proteins, and transendothelial migration. Alternative splicing results in multiple transcript variants encoding different isoforms.

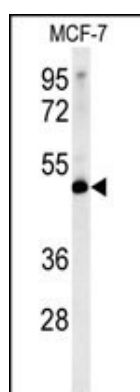
References

Davila, S., et al. Genes Immun. (2010)
Odefrey, F., et al. Cancer Res. 70(4):1449-1458(2010)
Bhatti, P., et al. Radiat. Res. 173(2):214-224(2010)
Tamimi, R.M., et al. Cancer Causes Control (2010)

Images

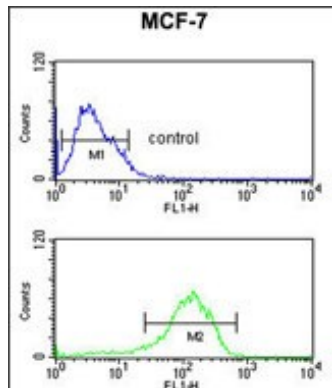
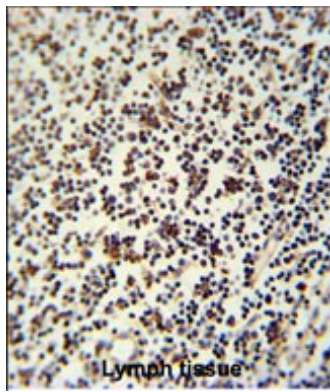


All lanes : Anti-LSP1 Antibody (Center) at 1:8000 dilution
Lane 1: Daudi whole cell lysate Lane 2: Ramos whole cell lysate Lysates/proteins at 20 µg per lane. Secondary Goat Anti-Rabbit IgG, (H+L), Peroxidase conjugated at 1/10000 dilution. Predicted band size : 37 kDa Blocking/Dilution buffer: 5% NFDM/TBST.



LSP1 Antibody (Center) (Cat.#AP5442c) western blot analysis in MCF-7 cell line lysates (35ug/lane).This demonstrates the LSP1 antibody detected the LSP1 protein (arrow).

LSP1 Antibody (Center) (Cat. #AP5442c) immunohistochemistry analysis in formalin fixed and paraffin embedded human lymph tissue followed by peroxidase conjugation of the secondary antibody and DAB staining. This data demonstrates the use of the LSP1 Antibody (Center) for immunohistochemistry. Clinical relevance has not been evaluated.



LSP1 Antibody (Center) (Cat. #AP5442c) flow cytometric analysis of MCF-7 cells (bottom histogram) compared to a negative control cell (top histogram). FITC-conjugated goat-anti-rabbit secondary antibodies were used for the analysis.

Please note: All products are 'FOR RESEARCH USE ONLY. NOT FOR USE IN DIAGNOSTIC OR THERAPEUTIC PROCEDURES'.