

C7orf28A Antibody (Center)

Affinity Purified Rabbit Polyclonal Antibody (Pab)

Catalog # AP5454c

Product Information

Application	WB, IHC-P, E
Primary Accession	P86791
Other Accession	Q8C1Y8 , Q0VD30 , P86790 , NP_932765
Reactivity	Human, Mouse
Predicted	Bovine
Host	Rabbit
Clonality	Polyclonal
Isotype	Rabbit IgG
Clone Names	RB26192
Calculated MW	55866
Antigen Region	239-265

Additional Information

Gene ID	221960;51622
Other Names	Vacuolar fusion protein CCZ1 homolog, CCZ1, C7orf28A
Target/Specificity	This C7orf28A antibody is generated from rabbits immunized with a KLH conjugated synthetic peptide between 239-265 amino acids from the Central region of human C7orf28A.
Dilution	WB~~1:1000 IHC-P~~1:100~500 E~~Use at an assay dependent concentration.
Format	Purified polyclonal antibody supplied in PBS with 0.09% (W/V) sodium azide. This antibody is purified through a protein A column, followed by peptide affinity purification.
Storage	Maintain refrigerated at 2-8°C for up to 2 weeks. For long term storage store at -20°C in small aliquots to prevent freeze-thaw cycles.
Precautions	C7orf28A Antibody (Center) is for research use only and not for use in diagnostic or therapeutic procedures.

Protein Information

Name	CCZ1
Synonyms	C7orf28A
Function	Acts in concert with MON1A, as a guanine exchange factor (GEF) for RAB7,

promotes the exchange of GDP to GTP, converting it from an inactive GDP-bound form into an active GTP-bound form (PubMed:[23084991](#)).

Cellular Location Lysosome membrane.

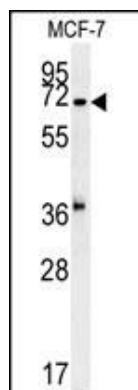
Background

CG028 belongs to the UPF0550 family.

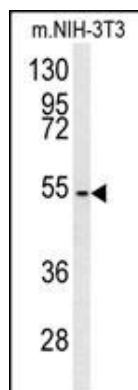
References

Brandenberger, R., et al. Nat. Biotechnol. 22(6):707-716(2004)
Ota, T., et al. Nat. Genet. 36(1):40-45(2004)

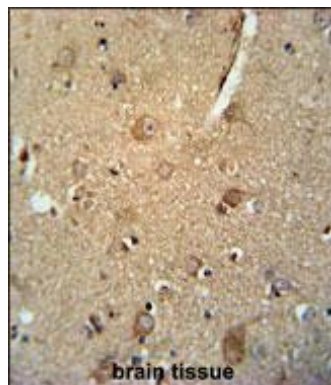
Images



C7orf28A Antibody (Center) (Cat.#AP5454c) western blot analysis in MCF-7 cell line lysates (35ug/lane). This demonstrates the C7orf28A antibody detected the C7orf28A protein (arrow).



C7orf28A Antibody (Center) (Cat.#AP5454c) western blot analysis in mouse NIH-3T3 cell line lysates (35ug/lane). This demonstrates the C7orf28A antibody detected the C7orf28A protein (arrow).



C7orf28A Antibody (Center) (Cat. #AP5454c) immunohistochemistry analysis in formalin fixed and paraffin embedded human brain tissue followed by peroxidase conjugation of the secondary antibody and DAB staining. This data demonstrates the use of the C7orf28A Antibody (Center) for immunohistochemistry. Clinical relevance has not been evaluated.