

# TMEM59L Polyclonal Antibody

Purified Rabbit Polyclonal Antibody (Pab)

Catalog # AP54579

## Product Information

---

<b>Application</b>	WB, IHC-P, IHC-F, IF, ICC, E
<b>Primary Accession</b>	<a href="#">Q9UK28</a>
<b>Reactivity</b>	Rat, Pig, Dog, Bovine
<b>Host</b>	Rabbit
<b>Clonality</b>	Polyclonal
<b>Calculated MW</b>	37619
<b>Physical State</b>	Liquid
<b>Immunogen</b>	KLH conjugated synthetic peptide derived from human TMEM59L
<b>Epitope Specificity</b>	251-342/342
<b>Isotype</b>	IgG
<b>Purity</b>	affinity purified by Protein A

**Buffer** 0.01M TBS (pH7.4) with 1% BSA, 0.02% Proclin300 and 50% Glycerol.

**SUBCELLULAR LOCATION** Golgi apparatus membrane.

**SIMILARITY** Belongs to the TMEM59 family.

**Post-translational modifications** Belongs to the TMEM59 family.

**Important Note** This product as supplied is intended for research use only, not for use in human, therapeutic or diagnostic applications.

**Background Descriptions** BSMAP is a 342 amino acid type-I membrane glycoprotein that localizes to organelle membranes and belongs to the TMEM59 family. Expressed at high levels in brain tissue, BSMAP is thought to play a role in brain function and central nervous system activity. The gene encoding BSMAP maps to human chromosome 19, which consists of over 63 million bases, houses approximately 1,400 genes and is recognized for having the greatest gene density of the human chromosomes. It is the genetic home for a number of immunoglobulin (Ig) superfamily members, including the killer cell and leukocyte Ig-like receptors, a number of ICAMs, the CEACAM and PSG family and Fc receptors (FcRs).

## Additional Information

---

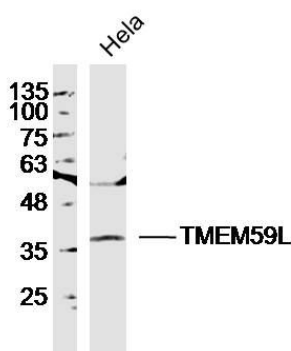
<b>Gene ID</b>	25789
<b>Other Names</b>	Transmembrane protein 59-like, Brain-specific membrane-anchored protein, TMEM59L, BSMAP, C19orf4
<b>Target/Specificity</b>	Expressed preferentially at high level in the brain.
<b>Dilution</b>	WB=1:500-2000,IHC-P=1:100-500,IHC-F=1:100-500,ICC=1:100-500,IF=1:100-500,ELISA=1:5000-10000

<b>Format</b>	0.01M TBS(pH7.4) with 1% BSA, 0.09% (W/V) sodium azide and 50% Glyce
<b>Storage</b>	Store at -20 °C for one year. Avoid repeated freeze/thaw cycles. When reconstituted in sterile pH 7.4 0.01M PBS or diluent of antibody the antibody is stable for at least two weeks at 2-4 °C.

## Protein Information

<b>Name</b>	TMEM59L
<b>Synonyms</b>	BSMAP, C19orf4
<b>Function</b>	Modulates the O-glycosylation and complex N-glycosylation steps occurring during the Golgi maturation of APP. Inhibits APP transport to the cell surface and further shedding.
<b>Cellular Location</b>	Golgi apparatus membrane; Single-pass type I membrane protein
<b>Tissue Location</b>	Expressed preferentially at high level in the brain

## Images



Sample: HeLa Cell(Human)Lysate at 30 ug  
 Primary: Anti-TMEM59L (AP54579) at 1/300 dilution  
 Secondary: IRDye800CW Goat Anti-Rabbit IgG at 1/20000 dilution  
 Predicted band size: 35kD  
 Observed band size: 37kD

Please note: All products are 'FOR RESEARCH USE ONLY. NOT FOR USE IN DIAGNOSTIC OR THERAPEUTIC PROCEDURES'.