

# Puratrophin 1 Polyclonal Antibody

Purified Rabbit Polyclonal Antibody (Pab)

Catalog # AP54615

## Product Information

---

<b>Application</b>	WB, IHC-P, IHC-F, IF, ICC, E
<b>Primary Accession</b>	<a href="#">Q58EX7</a>
<b>Reactivity</b>	Rat, Dog, Bovine
<b>Host</b>	Rabbit
<b>Clonality</b>	Polyclonal
<b>Calculated MW</b>	130803
<b>Physical State</b>	Liquid
<b>Immunogen</b>	KLH conjugated synthetic peptide derived from human Puratrophin 1/PLEKHG4
<b>Epitope Specificity</b>	945-1045/1191
<b>Isotype</b>	IgG
<b>Purity</b>	affinity purified by Protein A
<b>Buffer</b>	0.01M TBS (pH7.4) with 1% BSA, 0.02% Proclin300 and 50% Glycerol.
<b>SIMILARITY</b>	Contains 1 DH (DBL-homology) domain. Contains 1 PH domain.
<b>Important Note</b>	This product as supplied is intended for research use only, not for use in human, therapeutic or diagnostic applications.
<b>Background Descriptions</b>	The protein encoded by this gene contains multiple domains suggestive of a role in intracellular signaling and cytoskeleton dynamics at the Golgi apparatus. Mutations in this gene are associated with spinocerebellar ataxia 16q22-linked. Several alternatively spliced transcript variants, differing only in the 5' UTR, or encoding a different isoform, have been found for this gene. [provided by RefSeq, Jul 2008]

## Additional Information

---

<b>Gene ID</b>	25894
<b>Other Names</b>	Puratrophin-1, Pleckstrin homology domain-containing family G member 4, PH domain-containing family G member 4, Purkinje cell atrophy-associated protein 1, PLEKHG4, PRTPHN1
<b>Target/Specificity</b>	Expressed in kidney, Leydig cells in the testis, epithelial cells in the prostate gland and Langerhans islet in the pancreas. Isoform 1 and isoform 3 are strongly expressed in Purkinje cells and to a lower extent in other neurons (at protein level). Widely expressed at low levels. More strongly expressed in intestis and pancreas.
<b>Dilution</b>	WB=1:500-2000, IHC-P=1:100-500, IHC-F=1:100-500, ICC=1:100-500, IF=1:100-500, ELISA=1:5000-10000
<b>Format</b>	0.01M TBS (pH7.4) with 1% BSA, 0.09% (W/V) sodium azide and 50% Glyce

## Storage

Store at -20 °C for one year. Avoid repeated freeze/thaw cycles. When reconstituted in sterile pH 7.4 0.01M PBS or diluent of antibody the antibody is stable for at least two weeks at 2-4 °C.

## Protein Information

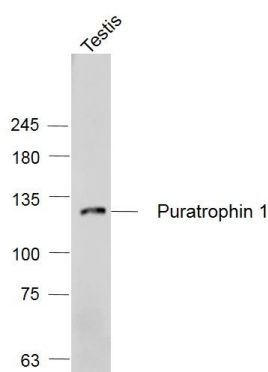
**Name** PLEKHG4

**Synonyms** PRTPHN1

**Function** Possible role in intracellular signaling and cytoskeleton dynamics at the Golgi.

**Tissue Location** Expressed in kidney, Leydig cells in the testis, epithelial cells in the prostate gland and Langerhans islet in the pancreas. Isoform 1 and isoform 3 are strongly expressed in Purkinje cells and to a lower extent in other neurons (at protein level). Widely expressed at low levels. More strongly expressed in testis and pancreas.

## Images



### Sample:

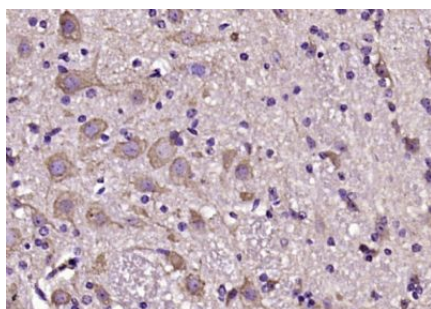
Testis (Mouse) Lysate at 40 ug

Primary: Anti- Puratrophin 1 (AP54615) at 1/1000 dilution

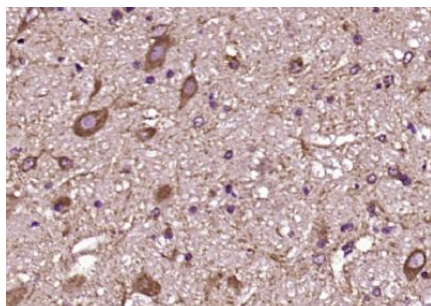
Secondary: IRDye800CW Goat Anti-Rabbit IgG at 1/20000 dilution

Predicted band size: 131 kD

Observed band size: 131 kD



Paraformaldehyde-fixed, paraffin embedded (mouse cerebellum); Antigen retrieval by boiling in sodium citrate buffer (pH6.0) for 15min; Block endogenous peroxidase by 3% hydrogen peroxide for 20 minutes; Blocking buffer (normal goat serum) at 37°C for 30min; Antibody incubation with (Puratrophin 1) Polyclonal Antibody, Unconjugated (AP54615) at 1:200 overnight at 4°C, followed by operating according to SP Kit(Rabbit) (sp-0023) instructions and DAB staining.



Paraformaldehyde-fixed, paraffin embedded (rat cerebellum); Antigen retrieval by boiling in sodium citrate buffer (pH6.0) for 15min; Block endogenous peroxidase by 3% hydrogen peroxide for 20 minutes; Blocking buffer (normal goat serum) at 37°C for 30min; Antibody incubation with (Puratrophin 1) Polyclonal Antibody, Unconjugated (AP54615) at 1:200 overnight at 4°C, followed by operating according to SP Kit(Rabbit) (sp-0023) instructions and DAB staining.

Please note: All products are 'FOR RESEARCH USE ONLY. NOT FOR USE IN DIAGNOSTIC OR THERAPEUTIC PROCEDURES'.