

Semaphorin 3D Rabbit pAb

Semaphorin 3D Rabbit pAb

Catalog # AP54692

Product Information

Application	IHC-P, IHC-F, IF
Primary Accession	O95025
Reactivity	Mouse, Rat
Predicted	Human, Chicken, Dog, Pig, Horse, Rabbit
Host	Rabbit
Clonality	Polyclonal
Calculated MW	89651
Physical State	Liquid
Immunogen	KLH conjugated synthetic peptide derived from human Semaphorin 3D
Epitope Specificity	351-450/777
Isotype	IgG
Purity	affinity purified by Protein A
Buffer	0.01M TBS (pH7.4) with 1% BSA, 0.02% Proclin300 and 50% Glycerol.
SUBCELLULAR LOCATION	Secreted
SIMILARITY	Belongs to the semaphorin family. Contains 1 Ig-like C2-type (immunoglobulin-like) domain. Contains 1 PSI domain. Contains 1 Sema domain.
Important Note	This product as supplied is intended for research use only, not for use in human, therapeutic or diagnostic applications.
Background Descriptions	Semaphorins are a family of cell surface and secreted proteins that are conserved from insects to humans. Members of this family of proteins are approximately 750 amino acids in length (including signal sequences) and are defined by a conserved extracellular "semaphorin" domain of approximately 500 amino acids containing 14-16 cysteines, blocks of conserved sequences and no obvious repeats. Secreted and cell-bound semaphorins chemically attract and repel the growth of neural axons, guiding the development of intricate networks of neural tissue. SEMA3D (semaphorin-3D), also known as coll-2 or Sema-Z2, is a 777 amino acid secreted protein that belongs to the semaphorin family and participates in axon-axon interactions and neural crest activity. SEMA3D binds neuropilin and is able to induce the collapse and paralysis of neuronal growth cones, as well as act to repel specific neuronal populations. SEMA3D contains one immunoglobulin-like (Ig-like) domain, one PSI domain and one semaphorin domain.

Additional Information

Gene ID	223117
Other Names	Semaphorin-3D, SEMA3D
Dilution	IHC-P=1:100-500,IHC-F=1:100-500,IF=1:100-500

Storage	Store at -20 °C for one year. Avoid repeated freeze/thaw cycles. When reconstituted in sterile pH 7.4 0.01M PBS or diluent of antibody the antibody is stable for at least two weeks at 2-4 °C.
----------------	---

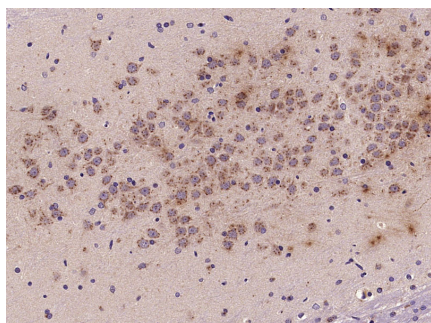
Protein Information

Name	SEMA3D
Function	Induces the collapse and paralysis of neuronal growth cones. Could potentially act as repulsive cues toward specific neuronal populations. Binds to neuropilin (By similarity).
Cellular Location	Secreted.

Background

Semaphorins are a family of cell surface and secreted proteins that are conserved from insects to humans. Members of this family of proteins are approximately 750 amino acids in length (including signal sequences) and are defined by a conserved extracellular "semaphorin" domain of approximately 500 amino acids containing 14-16 cysteines, blocks of conserved sequences and no obvious repeats. Secreted and cell-bound semaphorins chemically attract and repel the growth of neural axons, guiding the development of intricate networks of neural tissue. SEMA3D (semaphorin-3D), also known as coll-2 or Sema-Z2, is a 777 amino acid secreted protein that belongs to the semaphorin family and participates in axon-axon interactions and neural crest activity. SEMA3D binds neuropilin and is able to induce the collapse and paralysis of neuronal growth cones, as well as act to repel specific neuronal populations. SEMA3D contains one immunoglobulin-like (Ig-like) domain, one PSI domain and one semaphorin domain.

Images



Paraformaldehyde-fixed, paraffin embedded (Rat brain); Antigen retrieval by microwave in sodium citrate buffer (pH6.0) ; Block endogenous peroxidase by 3% hydrogen peroxide for 30 minutes; Blocking buffer (3% BSA) at RT for 30min; Antibody incubation with (Semaphorin 3D) Polyclonal Antibody, Unconjugated (AP54692) at 1:400 overnight at 4°C, followed by conjugation to the secondary antibody (labeled with HRP) and DAB staining.

Please note: All products are 'FOR RESEARCH USE ONLY. NOT FOR USE IN DIAGNOSTIC OR THERAPEUTIC PROCEDURES'.