

# AKAP7 Rabbit pAb

AKAP7 Rabbit pAb  
Catalog # AP54702

## Product Information

---

<b>Application</b>	IHC-P, IHC-F, IF
<b>Primary Accession</b>	<a href="#">O43687</a>
<b>Reactivity</b>	Human, Rat
<b>Predicted</b>	Mouse, Pig, Horse, Sheep
<b>Host</b>	Rabbit
<b>Clonality</b>	Polyclonal
<b>Calculated MW</b>	11465
<b>Physical State</b>	Liquid
<b>Immunogen</b>	KLH conjugated synthetic peptide derived from human AKAP7
<b>Epitope Specificity</b>	31-80/104
<b>Isotype</b>	IgG
<b>Purity</b>	affinity purified by Protein A
<b>Buffer</b>	0.01M TBS (pH7.4) with 1% BSA, 0.02% Proclin300 and 50% Glycerol.
<b>SUBCELLULAR LOCATION</b>	Apical cell membrane. Targeted predominantly to the apical membrane and Lateral cell membrane. Targeted predominantly to the lateral membrane.
<b>SUBUNIT</b>	Binds cAMP-dependent protein kinase (PKA). Interacts with PRKCA; only the cytoplasmic form is capable of interacting with PRKCA.
<b>Important Note</b>	This product as supplied is intended for research use only, not for use in human, therapeutic or diagnostic applications.
<b>Background Descriptions</b>	A kinase (PRKA) anchor protein 7; A kinase anchor protein 18 kD; A Kinase Anchor Protein 7; A Kinase Anchor Protein 7 Isoform Alpha; A kinase anchor protein 7 isoform beta; A kinase anchor protein 7 isoform gamma; A kinase anchor protein 7 isoforms alpha and beta; A kinase anchor protein 9 kDa; A Kinase Anchoring Protein 18; A-kinase anchor protein 18 kDa; A-kinase anchor protein 7 isoforms alpha and beta; AKA7A_HUMAN; AKAP 18; AKAP 7; AKAP-7 isoforms alpha and beta; AKAP15; AKAP18; Akap7; HGNC377; OTTHUMP00000040266; Protein kinase A anchoring protein 7; Protein kinase A anchoring protein 7 isoform alpha; Protein kinase A anchoring protein 7 isoform beta; Protein kinase A anchoring protein 7 isoform gamma; Protein kinase A anchoring protein 7 isoforms alpha/beta; Protein kinase A-anchoring protein 7 isoforms alpha/beta.

## Additional Information

---

<b>Gene ID</b>	9465
<b>Other Names</b>	A-kinase anchor protein 7 isoforms alpha and beta, AKAP-7 isoforms alpha and beta, A-kinase anchor protein 18 kDa, AKAP 18, Protein kinase A-anchoring protein 7 isoforms alpha/beta, PRKA7 isoforms alpha/beta, AKAP7, AKAP15, AKAP18

<b>Target/Specificity</b>	Expressed in brain, heart, lung, pancreas and skeletal muscle.
<b>Dilution</b>	IHC-P=1:100-500,IHC-F=1:100-500,IF=1:100-500
<b>Storage</b>	Store at -20 °C for one year. Avoid repeated freeze/thaw cycles. When reconstituted in sterile pH 7.4 0.01M PBS or diluent of antibody the antibody is stable for at least two weeks at 2-4 °C.

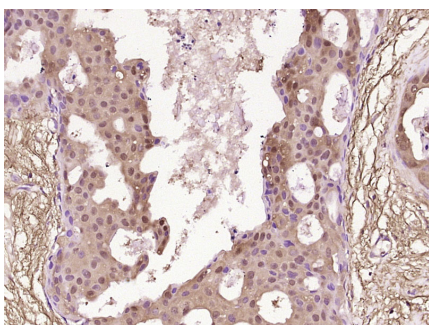
## Protein Information

<b>Name</b>	AKAP7
<b>Synonyms</b>	AKAP15, AKAP18
<b>Function</b>	Targets the cAMP-dependent protein kinase (PKA) to the plasma membrane, and permits functional coupling to the L-type calcium channel. The membrane-associated form reduces epithelial sodium channel (ENaC) activity, whereas the free cytoplasmic form may negatively regulate ENaC channel feedback inhibition by intracellular sodium.
<b>Cellular Location</b>	[Isoform Alpha]: Lateral cell membrane; Lipid- anchor. Note=Targeted predominantly to the lateral membrane
<b>Tissue Location</b>	Expressed in brain, heart, lung, pancreas and skeletal muscle.

## Background

A kinase (PRKA) anchor protein 7; A kinase anchor protein 18 kD; A Kinase Anchor Protein 7; A Kinase Anchor Protein 7 Isoform Alpha; A kinase anchor protein 7 isoform beta; A kinase anchor protein 7 isoform gamma; A kinase anchor protein 7 isoforms alpha and beta; A kinase anchor protein 9 kDa; A Kinase Anchoring Protein 18; A-kinase anchor protein 18 kDa; A-kinase anchor protein 7 isoforms alpha and beta; AKA7A\_HUMAN; AKAP 18; AKAP 7; AKAP-7 isoforms alpha and beta; AKAP15; AKAP18; Akap7; HGNC377; OTTHUMP00000040266; Protein kinase A anchoring protein 7; Protein kinase A anchoring protein 7 isoform alpha; Protein kinase A anchoring protein 7 isoform beta; Protein kinase A anchoring protein 7 isoform gamma; Protein kinase A anchoring protein 7 isoforms alpha/beta; Protein kinase A-anchoring protein 7 isoforms alpha/beta.

## Images



Paraformaldehyde-fixed, paraffin embedded (Human breast carcinoma); Antigen retrieval by boiling in sodium citrate buffer (pH6.0) for 15min; Block endogenous peroxidase by 3% hydrogen peroxide for 20 minutes; Blocking buffer (normal goat serum) at 37°C for 30min; Antibody incubation with (AKAP7) Polyclonal Antibody, Unconjugated (AP54702) at 1:400 overnight at 4°C, followed by operating according to SP Kit(Rabbit) (sp-0023) instructions and DAB staining.

Please note: All products are 'FOR RESEARCH USE ONLY. NOT FOR USE IN DIAGNOSTIC OR THERAPEUTIC PROCEDURES'.