

SOX1 Polyclonal Antibody

Purified Rabbit Polyclonal Antibody (Pab)

Catalog # AP54808

Product Information

Application	IHC-P, IHC-F, IF, ICC, E
Primary Accession	O00570
Reactivity	Rat, Pig
Host	Rabbit
Clonality	Polyclonal
Calculated MW	39023
Physical State	Liquid
Immunogen	KLH conjugated synthetic peptide derived from Human SOX6
Epitope Specificity	61-170/391
Isotype	IgG
Purity	affinity purified by Protein A
Buffer	0.01M TBS (pH7.4) with 1% BSA, 0.02% Proclin300 and 50% Glycerol.
SUBCELLULAR LOCATION	Nucleus.
SIMILARITY	Contains 1 HMG box DNA-binding domain.
Post-translational modifications	Sumoylation inhibits the transcriptional activity.
Important Note	This product as supplied is intended for research use only, not for use in human, therapeutic or diagnostic applications.
Background Descriptions	This intronless gene encodes a member of the SOX (SRY-related HMG-box) family of transcription factors involved in the regulation of embryonic development and in the determination of the cell fate. The encoded protein may act as a transcriptional activator after forming a protein complex with other proteins. In mice, a similar protein regulates the gamma-crystallin genes and is essential for lens development. [provided by RefSeq, Jul 2008]

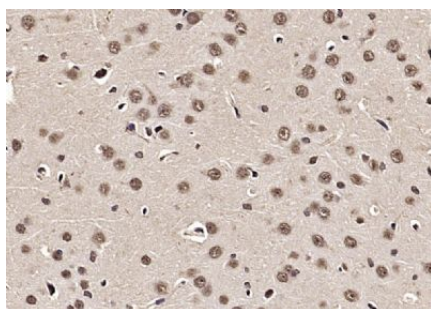
Additional Information

Gene ID	6656
Other Names	Transcription factor SOX-1, SOX1
Target/Specificity	Mainly expressed in the developing central nervous system.
Dilution	IHC-P=1:100-500,IHC-F=1:100-500,ICC=1:100-500,IF=1:100-500,ELISA=1:5000-10000
Format	0.01M TBS(pH7.4) with 1% BSA, 0.09% (W/V) sodium azide and 50% Glyce
Storage	Store at -20 °C for one year. Avoid repeated freeze/thaw cycles. When reconstituted in sterile pH 7.4 0.01M PBS or diluent of antibody the antibody is stable for at least two weeks at 2-4 °C.

Protein Information

Name	SOX1
Function	Transcriptional activator. May function as a switch in neuronal development. Keeps neural cells undifferentiated by counteracting the activity of proneural proteins and suppresses neuronal differentiation (By similarity).
Cellular Location	Nucleus.
Tissue Location	Mainly expressed in the developing central nervous system

Images



Paraformaldehyde-fixed, paraffin embedded (rat brain); Antigen retrieval by microwave in sodium citrate buffer (pH6.0) ; Block endogenous peroxidase by 3% hydrogen peroxide for 30 minutes; Blocking buffer (3% BSA) at RT for 30min; Antibody incubation with (SOX1) Polyclonal Antibody, Unconjugated (AP54808) at 1:400 overnight at 4°C, followed by conjugation to the secondary antibody (labeled with HRP)and DAB staining.

Please note: All products are 'FOR RESEARCH USE ONLY. NOT FOR USE IN DIAGNOSTIC OR THERAPEUTIC PROCEDURES'.