

PRB2 Antibody (C-term)

Affinity Purified Rabbit Polyclonal Antibody (Pab)

Catalog # AP5480b

Product Information

Application	WB, IHC-P, FC, E
Primary Accession	P02812
Other Accession	P04280 , NP_006239.3
Reactivity	Human, Mouse
Host	Rabbit
Clonality	Polyclonal
Isotype	Rabbit IgG
Clone Names	RB26910
Calculated MW	40809
Antigen Region	388-416

Additional Information

Gene ID	653247
Other Names	Basic salivary proline-rich protein 2, Salivary proline-rich protein, Con1 glycoprotein, Basic proline-rich peptide IB-1, Basic proline-rich peptide P-E, IB-9, Basic proline-rich peptide IB-7, Basic proline-rich peptide IB-8c, Basic peptide P-F, Basic proline-rich peptide IB-4, PRB2
Target/Specificity	This PRB2 antibody is generated from rabbits immunized with a KLH conjugated synthetic peptide between 388-416 amino acids from the C-terminal region of human PRB2.
Dilution	WB~~1:1000 IHC-P~~1:100~500 FC~~1:10~50 E~~Use at an assay dependent concentration.
Format	Purified polyclonal antibody supplied in PBS with 0.09% (W/V) sodium azide. This antibody is purified through a protein A column, followed by peptide affinity purification.
Storage	Maintain refrigerated at 2-8°C for up to 2 weeks. For long term storage store at -20°C in small aliquots to prevent freeze-thaw cycles.
Precautions	PRB2 Antibody (C-term) is for research use only and not for use in diagnostic or therapeutic procedures.

Protein Information

Name	PRB2
-------------	------

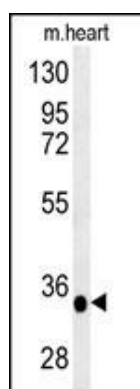
Background

The function of PRB2 remains unknown.

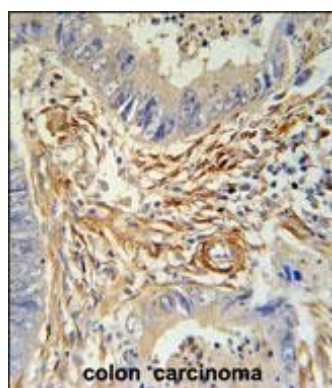
References

Macaluso, M., et al. Ann. Oncol. 16 SUPPL 4, IV20-IV22 (2005) : Tonini, T., et al. Oncogene 23(28):4930-4937(2004) Azen, E.A., et al. Am. J. Hum. Genet. 58(1):143-153(1996)

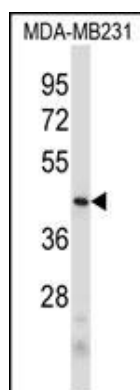
Images



PRB2 Antibody (C-term) (Cat.#AP5480b) western blot analysis in mouse heart tissue lysates (35ug/lane). This demonstrates the PRB2 antibody detected PRB2 protein (arrow).

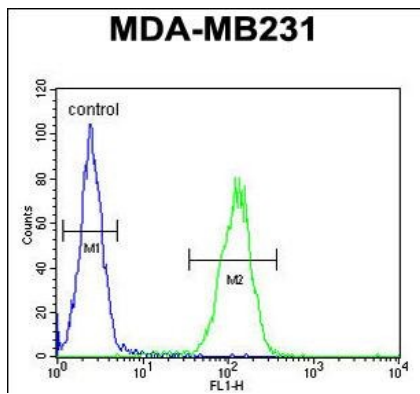


PRB2 Antibody (C-term) (Cat. #AP5480b) immunohistochemistry analysis in formalin fixed and paraffin embedded human colon carcinoma followed by peroxidase conjugation of the secondary antibody and DAB staining. This data demonstrates the use of the PRB2 Antibody (C-term) for immunohistochemistry. Clinical relevance has not been evaluated.



PRB2 Antibody (C-term) (Cat.#AP5480b) western blot analysis in MDA-MB231 cell line lysates (35ug/lane). This demonstrates the PRB2 antibody detected the PRB2 protein (arrow).

PRB2 Antibody (C-term) (Cat. #AP5480b) flow cytometric analysis of MDA-MB231 cells (right histogram) compared to a negative control cell (left histogram). FITC-conjugated goat-anti-rabbit secondary antibodies were used for the analysis.



Citations

- [Detection of proline-rich proteins for the identification of saliva by enzyme-linked immunosorbent assay.](#)

Please note: All products are 'FOR RESEARCH USE ONLY. NOT FOR USE IN DIAGNOSTIC OR THERAPEUTIC PROCEDURES'.