

THEMIS Rabbit pAb

THEMIS Rabbit pAb
Catalog # AP54827

Product Information

Application	WB, IHC-P, IHC-F, IF
Primary Accession	Q8N1K5
Reactivity	Human
Predicted	Mouse, Rat, Dog, Pig, Horse, Rabbit
Host	Rabbit
Clonality	Polyclonal
Calculated MW	73452
Physical State	Liquid
Immunogen	KLH conjugated synthetic peptide derived from Human THEMIS
Epitope Specificity	301-400/641
Isotype	IgG
Purity	affinity purified by Protein A
Buffer	0.01M TBS (pH7.4) with 1% BSA, 0.02% Proclin300 and 50% Glycerol.
SUBCELLULAR LOCATION	Cytoplasm. Nucleus.
SIMILARITY	Belongs to the themis family.
Post-translational modifications	Phosphorylated on Tyr residues quickly after TCR stimulation.
Important Note	This product as supplied is intended for research use only, not for use in human, therapeutic or diagnostic applications.
Background Descriptions	<p>Themis is a 641 amino acid nuclear and cytoplasmic protein that exists as three alternatively spliced isoforms. Themis belongs to the themis family and interacts with PLC γ1, Emt and GRB2. Acting through T-cell antigen receptor (TCR) signaling and through the regulation of calcium influx and phosphorylation of ERK 1, Themis plays a central role in late thymocyte development by controlling both positive and negative T-cell selection. Themis is phosphorylated on Tyr residues quickly after TCR stimulation. The gene that encodes Themis maps to human chromosome 6q22.33. With 170 million base pairs, chromosome 6 comprises nearly 6% of the human genome. Deletion of a portion of the q arm of chromosome 6 is associated with early onset intestinal cancer, suggesting the presence of a cancer susceptibility locus. Additionally, Porphyria cutanea tarda, Parkinson's disease, Stickler syndrome and a susceptibility to bipolar disorder are all associated with genes that map to chromosome 6.</p>

Additional Information

Gene ID	387357
Other Names	Protein THEMIS, Thymocyte-expressed molecule involved in selection, THEMIS, C6orf190, C6orf207

Dilution	WB=1:500-2000,IHC-P=1:100-500,IHC-F=1:100-500,IF=1:100-500
Storage	Store at -20 °C for one year. Avoid repeated freeze/thaw cycles. When reconstituted in sterile pH 7.4 0.01M PBS or diluent of antibody the antibody is stable for at least two weeks at 2-4 °C.

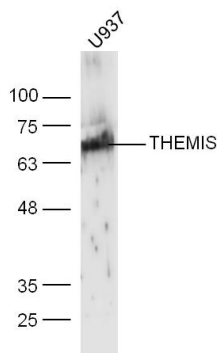
Protein Information

Name	THEMIS
Synonyms	C6orf190, C6orf207
Function	Plays a central role in late thymocyte development by controlling both positive and negative T-cell selection. Required to sustain and/or integrate signals required for proper lineage commitment and maturation of T-cells. Regulates T-cell development through T-cell antigen receptor (TCR) signaling and in particular through the regulation of calcium influx and phosphorylation of Erk.
Cellular Location	Cytoplasm {ECO:0000250 UniProtKB:Q8BGW0}. Nucleus {ECO:0000250 UniProtKB:Q8BGW0}

Background

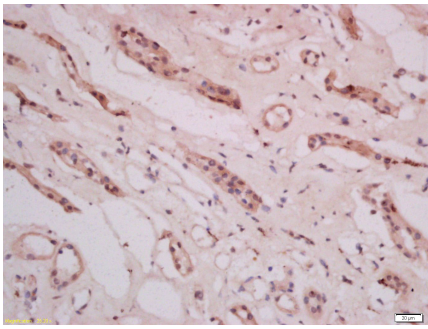
Themis is a 641 amino acid nuclear and cytoplasmic protein that exists as three alternatively spliced isoforms. Themis belongs to the themis family and interacts with PLC γ 1, Emt and GRB2. Acting through T-cell antigen receptor (TCR) signaling and through the regulation of calcium influx and phosphorylation of ERK 1, Themis plays a central role in late thymocyte development by controlling both positive and negative T-cell selection. Themis is phosphorylated on Tyr residues quickly after TCR stimulation. The gene that encodes Themis maps to human chromosome 6q22.33. With 170 million base pairs, chromosome 6 comprises nearly 6% of the human genome. Deletion of a portion of the q arm of chromosome 6 is associated with early onset intestinal cancer, suggesting the presence of a cancer susceptibility locus. Additionally, Porphyria cutanea tarda, Parkinson's disease, Stickler syndrome and a susceptibility to bipolar disorder are all associated with genes that map to chromosome 6.

Images



Sample:
U937 Cell (Human) Lysate at 30 ug
Primary: Anti-THEMIS (AP54827) at 1/300 dilution
Secondary: IRDye800CW Goat Anti-Rabbit IgG at 1/20000 dilution
Predicted band size: 73 kD
Observed band size: 73 kD

Tissue/cell: human kidney tissue; 4%
Paraformaldehyde-fixed and paraffin-embedded;
Antigen retrieval: citrate buffer (0.01M, pH 6.0), Boiling
bathing for 15min; Block endogenous peroxidase by 3%
Hydrogen peroxide for 30min; Blocking buffer (normal



goat serum,C-0005) at 37°C for 20 min;
Incubation: Anti-THEMIS Polyclonal Antibody,
Unconjugated(AP54827) 1:200, overnight at 4°C, followed
by conjugation to the secondary antibody(SP-0023) and
DAB(C-0010) staining

Please note: All products are 'FOR RESEARCH USE ONLY. NOT FOR USE IN DIAGNOSTIC OR THERAPEUTIC PROCEDURES'.