

# SYT13 Antibody (N-term)

Affinity Purified Rabbit Polyclonal Antibody (Pab)

Catalog # AP5482a

## Product Information

---

<b>Application</b>	WB, IHC-P, E
<b>Primary Accession</b>	<a href="#">Q7L8C5</a>
<b>Other Accession</b>	<a href="#">NP_065877.1</a>
<b>Reactivity</b>	Human
<b>Host</b>	Rabbit
<b>Clonality</b>	Polyclonal
<b>Isotype</b>	Rabbit IgG
<b>Clone Names</b>	RB26917
<b>Calculated MW</b>	46885
<b>Antigen Region</b>	25-52

## Additional Information

---

<b>Gene ID</b>	57586
<b>Other Names</b>	Synaptotagmin-13, Synaptotagmin XIII, SytXIII, SYT13, KIAA1427
<b>Target/Specificity</b>	This SYT13 antibody is generated from rabbits immunized with a KLH conjugated synthetic peptide between 25-52 amino acids from the N-terminal region of human SYT13.
<b>Dilution</b>	WB~~1:1000 IHC-P~~1:100~500 E~~Use at an assay dependent concentration.
<b>Format</b>	Purified polyclonal antibody supplied in PBS with 0.09% (W/V) sodium azide. This antibody is purified through a protein A column, followed by peptide affinity purification.
<b>Storage</b>	Maintain refrigerated at 2-8°C for up to 2 weeks. For long term storage store at -20°C in small aliquots to prevent freeze-thaw cycles.
<b>Precautions</b>	SYT13 Antibody (N-term) is for research use only and not for use in diagnostic or therapeutic procedures.

## Protein Information

---

<b>Name</b>	SYT13
<b>Synonyms</b>	KIAA1427
<b>Function</b>	May be involved in transport vesicle docking to the plasma membrane.

<b>Cellular Location</b>	Membrane; Single-pass membrane protein
<b>Tissue Location</b>	Expressed in brain, pancreas and kidney.

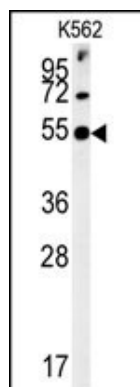
## Background

SYT13 belongs to the large synaptotagmin protein family. All synaptotagmins show type I membrane topology, with an extracellular N terminus, a single transmembrane region, and a cytoplasmic C terminus containing tandem C2 domains. Major functions of synaptotagmins include vesicular traffic, exocytosis, and secretion.

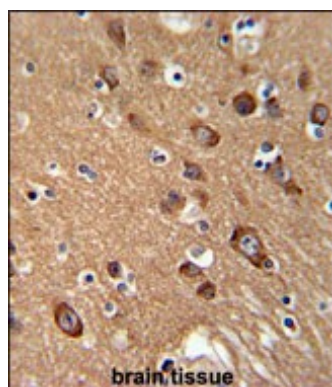
## References

Jahn, J.E., et al. Int. J. Oncol. 32(2):441-449(2008)  
 Craxton, M. Genomics 77 (1-2), 43-49 (2001) :  
 Fukuda, M., et al. Biochem. J. 354 (PT 2), 249-257 (2001) :  
 Simpson, J.C., et al. EMBO Rep. 1(3):287-292(2000)

## Images



SYT13 Antibody (N-term) (Cat.#AP5482a) western blot analysis in K562 cell line lysates (35ug/lane). This demonstrates the SYT13 antibody detected the SYT13 protein (arrow).



SYT13 Antibody (N-term) (Cat. #AP5482a) immunohistochemistry analysis in formalin fixed and paraffin embedded human brain tissue followed by peroxidase conjugation of the secondary antibody and DAB staining. This data demonstrates the use of the SYT13 Antibody (N-term) for immunohistochemistry. Clinical relevance has not been evaluated.

## Citations

- [Glucocorticoid induces human beta cell dysfunction by involving riborepressor GAS5 LincRNA](#)

Please note: All products are 'FOR RESEARCH USE ONLY. NOT FOR USE IN DIAGNOSTIC OR THERAPEUTIC PROCEDURES'.