

5T4 Rabbit pAb

5T4 Rabbit pAb

Catalog # AP54833

Product Information

Application	WB
Primary Accession	Q13641
Reactivity	Human
Predicted	Mouse, Rat, Dog
Host	Rabbit
Clonality	Polyclonal
Calculated MW	46032
Physical State	Liquid
Immunogen	KLH conjugated synthetic peptide derived from human TPBG/5T4
Epitope Specificity	31-100/420
Isotype	IgG
Purity	affinity purified by Protein A
Buffer	0.01M TBS (pH7.4) with 1% BSA, 0.02% Proclin300 and 50% Glycerol.
SUBCELLULAR LOCATION	Membrane.
SIMILARITY	Contains 6 LRR (leucine-rich) repeats. Contains 1 LRRCT domain. Contains 1 LRRNT domain.
Important Note	This product as supplied is intended for research use only, not for use in human, therapeutic or diagnostic applications.
Background Descriptions	TPBG is a 420 amino acid single-pass type I membrane protein expressed by all types of trophoblasts as early as 9 weeks of development. TPBG contains an N-terminal putative signal sequence, a 310-residue extracellular region, a membrane anchorage domain and a 44-amino acid cytoplasmic tail with a potential phosphorylation site. The extracellular region has seven potential N-glycosylation sites and seven leucine-rich repeats, which are located in two regions separated by a hydrophilic stretch. Suggested to be involved in cell adhesion, TPBG may also be associated with tumor growth and progression.

Additional Information

Gene ID	7162
Other Names	Trophoblast glycoprotein, 5T4 oncofetal antigen, 5T4 oncofetal trophoblast glycoprotein, 5T4 oncotrophoblast glycoprotein, M6P1, Wnt-activated inhibitory factor 1, WAIF1, TPBG, 5T4
Target/Specificity	Expressed by all types of trophoblasts as early as 9 weeks of development. Specific for trophoblastic cells except for amniotic epithelium. In adult tissues, the expression is limited to a few epithelial cell types but is found on a variety of carcinoma.
Dilution	WB=1:500-2000

Storage

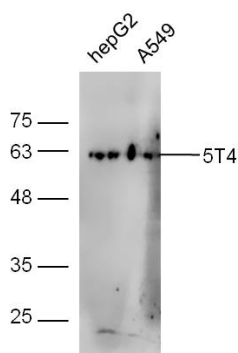
Store at -20 °C for one year. Avoid repeated freeze/thaw cycles. When reconstituted in sterile pH 7.4 0.01M PBS or diluent of antibody the antibody is stable for at least two weeks at 2-4 °C.

Protein Information

Name	TPBG
Synonyms	5T4
Function	May function as an inhibitor of Wnt/beta-catenin signaling by indirectly interacting with LRP6 and blocking Wnt3a-dependent LRP6 internalization.
Cellular Location	Cell membrane; Single-pass type I membrane protein
Tissue Location	Expressed by all types of trophoblasts as early as 9 weeks of development. Specific for trophoblastic cells except for amniotic epithelium. In adult tissues, the expression is limited to a few epithelial cell types but is found on a variety of carcinoma

Background

TPBG is a 420 amino acid single-pass type I membrane protein expressed by all types of trophoblasts as early as 9 weeks of development. TPBG contains an N-terminal putative signal sequence, a 310-residue extracellular region, a membrane anchorage domain and a 44-amino acid cytoplasmic tail with a potential phosphorylation site. The extracellular region has seven potential N-glycosylation sites and seven leucine-rich repeats, which are located in two regions separated by a hydrophilic stretch. Suggested to be involved in cell adhesion, TPBG may also be associated with tumor growth and progression.

Images**Sample:**

HepG2 Cell (Human) Lysate at 30 ug

A549 Cell (Human) Lysate at 30 ug

Primary: Anti-5T4 (AP54833) at 1/300 dilution

Secondary: IRDye800CW Goat Anti-Rabbit IgG at 1/20000 dilution

Predicted band size: 43 kD

Observed band size: 63 kD

Please note: All products are 'FOR RESEARCH USE ONLY. NOT FOR USE IN DIAGNOSTIC OR THERAPEUTIC PROCEDURES'.