

ARFRP1 Polyclonal Antibody

Purified Rabbit Polyclonal Antibody (Pab)

Catalog # AP54871

Product Information

Application	WB, IHC-P, IHC-F, IF, ICC, E
Primary Accession	Q13795
Reactivity	Rat, Pig, Dog
Host	Rabbit
Clonality	Polyclonal
Calculated MW	22614
Physical State	Liquid
Immunogen	KLH conjugated synthetic peptide derived from human ARFRP1
Epitope Specificity	1-100/201
Isotype	IgG
Purity	affinity purified by Protein A
Buffer	0.01M TBS (pH7.4) with 1% BSA, 0.02% Proclin300 and 50% Glycerol.
SUBCELLULAR LOCATION	Golgi Apparatus
SIMILARITY	Belongs to the small GTPase superfamily. Arf family.
SUBUNIT	Interacts with SYS1.
Important Note	This product as supplied is intended for research use only, not for use in human, therapeutic or diagnostic applications.
Background Descriptions	The ADP-ribosylation factor (ARF) protein family are structurally and functionally conserved members of the Ras superfamily of regulatory GTP-binding proteins. ARFs influence vesicle trafficking and signal transduction in eukaryotic cells and they play a central role in the maintenance of organelle integrity, assembly of coat proteins and activation of phospholipase D (PC-PLD). ARFRP1 (ADP-ribosylation factor related protein 1), also known as ARP or ARL18, is a 201 amino acid membrane-associated GTPase that localizes to the plasma membrane and the Golgi apparatus and is related to the ARF family of regulatory proteins. Expressed in a variety of tissues, ARFRP1 interacts with SYS1 and is thought to be involved in plasma membrane-related signaling events. ARFRP1 exists as multiple alternatively spliced isoforms and is encoded by a gene which maps to a gene cluster on chromosome 20 that is commonly overexpressed in tumors, suggesting a role for ARFRP1 in carcinogenesis.

Additional Information

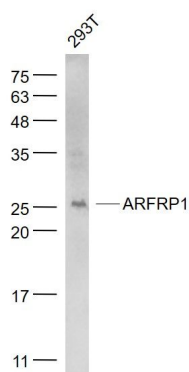
Gene ID	10139
Other Names	ADP-ribosylation factor-related protein 1, ARF-related protein 1, ARP, ARFRP1, ARP1
Target/Specificity	Found in most tissues.

Dilution	WB=1:500-2000,IHC-P=1:100-500,IHC-F=1:100-500,ICC=1:100-500,IF=1:100-500,ELISA=1:5000-10000
Format	0.01M TBS(pH7.4) with 1% BSA, 0.09% (W/V) sodium azide and 50% Glyce
Storage	Store at -20 °C for one year. Avoid repeated freeze/thaw cycles. When reconstituted in sterile pH 7.4 0.01M PBS or diluent of antibody the antibody is stable for at least two weeks at 2-4 °C.

Protein Information

Name	ARFRP1
Synonyms	ARP1
Function	Trans-Golgi-associated GTPase that regulates protein sorting. Controls the targeting of ARL1 and its effector to the trans-Golgi. Required for the lipidation of chylomicrons in the intestine and required for VLDL lipidation in the liver.
Cellular Location	Golgi apparatus. Golgi apparatus, trans-Golgi network {ECO:0000250 UniProtKB:Q8BXL7} Note=Located in the trans-Golgi in the GTP-bound active state {ECO:0000250 UniProtKB:Q8BXL7}
Tissue Location	Found in most tissues.

Images



Sample:
 293T(Human) Cell Lysate at 30 ug
 Primary: Anti- ARFRP1 (AP54871) at 1/1000 dilution
 Secondary: IRDye800CW Goat Anti-Rabbit IgG at 1/20000 dilution
 Predicted band size: 23 kD
 Observed band size: 25 kD

Please note: All products are 'FOR RESEARCH USE ONLY. NOT FOR USE IN DIAGNOSTIC OR THERAPEUTIC PROCEDURES'.