

PFDN1 Rabbit pAb

PFDN1 Rabbit pAb
Catalog # AP54908

Product Information

Application	WB, IHC-P, IHC-F, IF
Primary Accession	O60925
Reactivity	Mouse, Rat
Predicted	Human, Chicken, Dog, Horse, Rabbit, Sheep
Host	Rabbit
Clonality	Polyclonal
Calculated MW	14210
Physical State	Liquid
Immunogen	KLH conjugated synthetic peptide derived from human PFDN1
Epitope Specificity	51-122/122
Isotype	IgG
Purity	affinity purified by Protein A
Buffer	0.01M TBS (pH7.4) with 1% BSA, 0.02% Proclin300 and 50% Glycerol.
SIMILARITY	Belongs to the prefoldin subunit beta family.
SUBUNIT	Heterohexamer of two PFD-alpha type and four PFD-beta type subunits.
Important Note	This product as supplied is intended for research use only, not for use in human, therapeutic or diagnostic applications.
Background Descriptions	This gene encodes a member of the prefoldin beta subunit family. The encoded protein is one of six subunits of prefoldin, a molecular chaperone complex that binds and stabilizes newly synthesized polypeptides, thereby allowing them to fold correctly. The complex, consisting of two alpha and four beta subunits, forms a double beta barrel assembly with six protruding coiled-coils. [provided by RefSeq, Jul 2008]

Additional Information

Gene ID	5201
Other Names	Prefoldin subunit 1, PFDN1, PFD1
Dilution	WB=1:500-2000,IHC-P=1:100-500,IHC-F=1:100-500,IF=1:100-500
Storage	Store at -20 °C for one year. Avoid repeated freeze/thaw cycles. When reconstituted in sterile pH 7.4 0.01M PBS or diluent of antibody the antibody is stable for at least two weeks at 2-4 °C.

Protein Information

Name	PFDN1
-------------	-------

Synonyms

PFD1

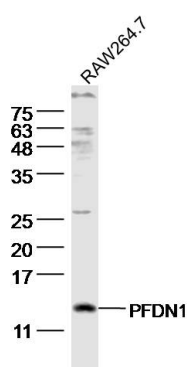
Function

Binds specifically to cytosolic chaperonin (c-CPN) and transfers target proteins to it. Binds to nascent polypeptide chain and promotes folding in an environment in which there are many competing pathways for nonnative proteins.

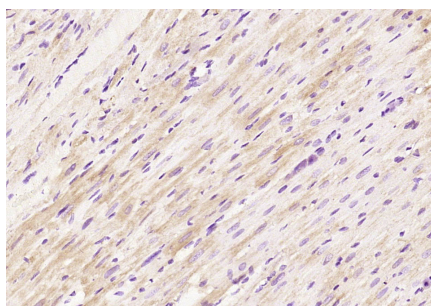
Background

This gene encodes a member of the prefoldin beta subunit family. The encoded protein is one of six subunits of prefoldin, a molecular chaperone complex that binds and stabilizes newly synthesized polypeptides, thereby allowing them to fold correctly. The complex, consisting of two alpha and four beta subunits, forms a double beta barrel assembly with six protruding coiled-coils. [provided by RefSeq, Jul 2008]

Images



Sample: Raw264.7 Cell (Mouse) Lysate at 40 ug
Primary: Anti- PFDN1 (AP54908) at 1/300 dilution
Secondary: IRDye800CW Goat Anti-Rabbit IgG at 1/20000 dilution
Predicted band size: 14 kD
Observed band size: 14 kD



Paraformaldehyde-fixed, paraffin embedded (rat heart);
Antigen retrieval by boiling in sodium citrate buffer (pH6.0) for 15min; Block endogenous peroxidase by 3% hydrogen peroxide for 20 minutes; Blocking buffer (normal goat serum) at 37°C for 30min; Antibody incubation with (PFDN1) Polyclonal Antibody, Unconjugated (AP54908) at 1:200 overnight at 4°C, followed by operating according to SP Kit(Rabbit) (sp-0023) instructions and DAB staining.

Please note: All products are 'FOR RESEARCH USE ONLY. NOT FOR USE IN DIAGNOSTIC OR THERAPEUTIC PROCEDURES'.