

DAPP1 Polyclonal Antibody

Purified Rabbit Polyclonal Antibody (Pab)

Catalog # AP55033

Product Information

Application	WB, IHC-P, IHC-F, IF, ICC, E
Primary Accession	Q9UN19
Reactivity	Rat, Dog
Host	Rabbit
Clonality	Polyclonal
Calculated MW	32194
Physical State	Liquid
Immunogen	KLH conjugated synthetic peptide derived from human DAPP1/BAM32
Epitope Specificity	51-160/280
Isotype	IgG
Purity	affinity purified by Protein A
Buffer	0.01M TBS (pH7.4) with 1% BSA, 0.02% Proclin300 and 50% Glycerol.
SUBCELLULAR LOCATION	Cytoplasm. Membrane. Membrane-associated after cell stimulation leading to its translocation.
SIMILARITY	Belongs to the short-chain dehydrogenases/reductases (SDR) family.
SUBUNIT	Interacts with PtdIns(3,4,5)P3 and PLCG2. In vitro, interacts with PtdIns(3,4)P2.
Post-translational modifications	Phosphorylated on tyrosine residues.
Important Note	This product as supplied is intended for research use only, not for use in human, therapeutic or diagnostic applications.
Background Descriptions	DHRS1 (dehydrogenase/reductase (SDR family) member 1), also known as SDR19C1, is a 313 amino acid protein that belongs to the short-chain dehydrogenases/reductases (SDR) family and likely functions as an oxidoreductase. Abundantly expressed in heart and liver, DHRS1 contains an SDR motif and is encoded by a gene that maps to human chromosome 14q12. Human chromosome 14 houses over 700 genes and comprises nearly 3.5% of the human genome. Chromosome 14 encodes the presenilin 1 (PSEN1) gene, which is one of the three key genes associated with the development of Alzheimer's disease (AD). The SERPINA1 gene is also located on chromosome 14 and, when defective, leads to the genetic disorder α -antitrypsin deficiency, which is characterized by severe lung complications and liver dysfunction.

Additional Information

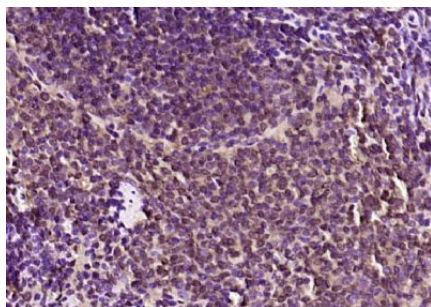
Gene ID	27071
Other Names	Dual adapter for phosphotyrosine and 3-phosphotyrosine and 3-phosphoinositide, hDAPP1, B lymphocyte adapter protein Bam32, B-cell adapter molecule of 32 kDa, DAPP1, BAM32

Target/Specificity	Detected in heart and liver, and at low levels in skeletal muscle, kidney and pancreas.
Dilution	WB=1:500-2000,IHC-P=1:100-500,IHC-F=1:100-500,ICC=1:100-500,IF=1:100-500,ELISA=1:5000-10000
Format	0.01M TBS(pH7.4) with 1% BSA, 0.09% (W/V) sodium azide and 50% Glyce
Storage	Store at -20 °C for one year. Avoid repeated freeze/thaw cycles. When reconstituted in sterile pH 7.4 0.01M PBS or diluent of antibody the antibody is stable for at least two weeks at 2-4 °C.

Protein Information

Name	DAPP1
Synonyms	BAM32
Function	May act as a B-cell-associated adapter that regulates B-cell antigen receptor (BCR)-signaling downstream of PI3K.
Cellular Location	Cytoplasm. Membrane; Peripheral membrane protein. Note=Membrane-associated after cell stimulation leading to its translocation
Tissue Location	Highly expressed in placenta and lung, followed by brain, heart, kidney, liver, pancreas and skeletal muscle. Expressed by B-lymphocytes, but not T-lymphocytes or nonhematopoietic cells

Images



Paraformaldehyde-fixed, paraffin embedded (rat spleen); Antigen retrieval by boiling in sodium citrate buffer (pH6.0) for 15min; Block endogenous peroxidase by 3% hydrogen peroxide for 20 minutes; Blocking buffer (normal goat serum) at 37°C for 30min; Antibody incubation with (DAPP1) Polyclonal Antibody, Unconjugated (AP55033) at 1:200 overnight at 4°C, followed by operating according to SP Kit(Rabbit) (sp-0023) instructions and DAB staining.

Please note: All products are 'FOR RESEARCH USE ONLY. NOT FOR USE IN DIAGNOSTIC OR THERAPEUTIC PROCEDURES'.