

# EHM2 Polyclonal Antibody

Purified Rabbit Polyclonal Antibody (Pab)

Catalog # AP55052

## Product Information

|                                |   |
|--------------------------------|---|
| <b>Application</b>             | WB, IHC-P, IHC-F, IF, ICC, E  |
| <b>Primary Accession</b>       | <a href="#">Q9H329</a>  |
| <b>Reactivity</b>              | Rat, Dog, Bovine  |
| <b>Host</b>                    | Rabbit  |
| <b>Clonality</b>               | Polyclonal  |
| <b>Calculated MW</b>           | 99712   |
| <b>Physical State</b>          | Liquid  |
| <b>Immunogen</b>               | KLH conjugated synthetic peptide derived from human EPB41L4B  |
| <b>Epitope Specificity</b>     | 351-450/900   |
| <b>Isotype</b>                 | IgG   |
| <b>Purity</b>                  | affinity purified by Protein A  |
| <b>Buffer</b>                  | 0.01M TBS (pH7.4) with 1% BSA, 0.02% Proclin300 and 50% Glycerol.   |
| <b>SUBCELLULAR LOCATION</b>    | Cytoplasm; cytoskeleton.  |
| <b>SIMILARITY</b>              | Contains 1 FERM domain.   |
| <b>Important Note</b>          | This product as supplied is intended for research use only, not for use in human, therapeutic or diagnostic applications.   |
| <b>Background Descriptions</b> | Predicted to be a structural constituent of cytoskeleton. Involved in several processes, including positive regulation of cell adhesion; positive regulation of keratinocyte migration; and wound healing. Acts upstream of or within actomyosin structure organization. Located in apical part of cell; cytosol; and plasma membrane. [provided by Alliance of Genome Resources, Apr 2022] |

## Additional Information

|                    |   |
|--------------------|---|
| <b>Gene ID</b>     | 54566   |
| <b>Other Names</b> | Band 4.1-like protein 4B, Erythrocyte membrane protein band 4.1-like 4B {ECO:0000312 HGNC:HGNC:19818}, FERM-containing protein CG1, Protein EHM2, EPB41L4B ( <a href="#">HGNC:19818</a> )       |
| <b>Dilution</b>    | WB=1:500-2000,IHC-P=1:100-500,IHC-F=1:100-500,ICC=1:100-500,IF=1:100-500,ELISA=1:5000-10000   |
| <b>Format</b>      | 0.01M TBS(pH7.4) with 1% BSA, 0.09% (W/V) sodium azide and 50% Glyce  |
| <b>Storage</b>     | Store at -20 °C for one year. Avoid repeated freeze/thaw cycles. When reconstituted in sterile pH 7.4 0.01M PBS or diluent of antibody the antibody is stable for at least two weeks at 2-4 °C. |

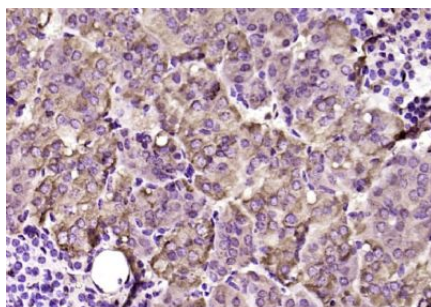
## Protein Information

---

|                          |   |
|--------------------------|---|
| <b>Name</b>              | EPB41L4B ( <a href="#">HGNC:19818</a> )   |
| <b>Function</b>          | Up-regulates the activity of the Rho guanine nucleotide exchange factor ARHGEF18 (By similarity). Involved in the regulation of the circumferential actomyosin belt in epithelial cells (PubMed: <a href="#">22006950</a> ). Promotes cellular adhesion, migration and motility in vitro and may play a role in wound healing (PubMed: <a href="#">23664528</a> ). May have a role in mediating cytoskeletal changes associated with steroid- induced cell differentiation (PubMed: <a href="#">14521927</a> ). |
| <b>Cellular Location</b> | Cytoplasm. Cell junction, tight junction Note=Accumulates along apical cell-cell boundaries and is also detected in the cytoplasm in a punctate manner.   |
| <b>Tissue Location</b>   | Expressed at higher levels in acute wounds than chronic wounds with increased expression in healing wounds, especially at the leading wound edge (PubMed:23664528). Isoform 1 is highly expressed in brain. Isoform 2 is highly expressed in testis with lower levels in prostate and breast (PubMed:14521927)  |

## Images

---



Paraformaldehyde-fixed, paraffin embedded (mouse adrenal gland); Antigen retrieval by boiling in sodium citrate buffer (pH6.0) for 15min; Block endogenous peroxidase by 3% hydrogen peroxide for 20 minutes; Blocking buffer (normal goat serum) at 37°C for 30min; Antibody incubation with (EHM2) Polyclonal Antibody, Unconjugated (AP55052) at 1:200 overnight at 4°C, followed by operating according to SP Kit(Rabbit) (sp-0023) instructions and DAB staining.

Please note: All products are 'FOR RESEARCH USE ONLY. NOT FOR USE IN DIAGNOSTIC OR THERAPEUTIC PROCEDURES'.