

FbxL4 Polyclonal Antibody

Purified Rabbit Polyclonal Antibody (Pab)

Catalog # AP55077

Product Information

Application	WB, IHC-P, IHC-F, IF, ICC, E
Primary Accession	Q9UKA2
Reactivity	Rat, Bovine
Host	Rabbit
Clonality	Polyclonal
Calculated MW	70097
Physical State	Liquid
Immunogen	KLH conjugated synthetic peptide derived from human FbxL4/FBL4
Epitope Specificity	15-100/621
Isotype	IgG
Purity	affinity purified by Protein A
Buffer	0.01M TBS (pH7.4) with 1% BSA, 0.02% Proclin300 and 50% Glycerol.
SUBCELLULAR LOCATION	Cytoplasm. Nucleus.
SIMILARITY	Contains 1 F-box domain. Contains 9 LRR (leucine-rich) repeats.
SUBUNIT	Part of a SCF (SKP1-cullin-F-box) protein ligase complex (By similarity).
Important Note	This product as supplied is intended for research use only, not for use in human, therapeutic or diagnostic applications.
Background Descriptions	This gene encodes a member of the F-box protein family which is characterized by an approximately 40 amino acid motif, the F-box. The F-box proteins constitute one of the four subunits of ubiquitin protein ligase complex called SCFs (SKP1-cullin-F-box), which function in phosphorylation-dependent ubiquitination. The F-box proteins are divided into 3 classes: Fbws containing WD-40 domains, Fbls containing leucine-rich repeats, and Fbxs containing either different protein-protein interaction modules or no recognizable motifs. The protein encoded by this gene belongs to the Fbls class and, in addition to an F-box, contains at least 9 tandem leucine-rich repeats. [provided by RefSeq, Jul 2008].

Additional Information

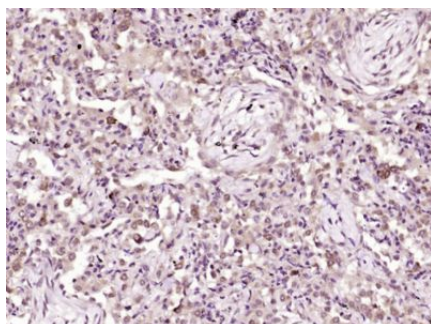
Gene ID	26235
Other Names	F-box/LRR-repeat protein 4, F-box and leucine-rich repeat protein 4, F-box protein FBL4/FBL5, FBXL4, FBL4, FBL5
Target/Specificity	Expressed in heart, kidney, liver, lung, pancreas, and placenta, but not in skeletal muscle.
Dilution	WB=1:500-2000,IHC-P=1:100-500,IHC-F=1:100-500,ICC=1:100-500,IF=1:100-500,ELISA=1:5000-10000

Format	0.01M TBS(pH7.4) with 1% BSA, 0.09% (W/V) sodium azide and 50% Glyce
Storage	Store at -20 °C for one year. Avoid repeated freeze/thaw cycles. When reconstituted in sterile pH 7.4 0.01M PBS or diluent of antibody the antibody is stable for at least two weeks at 2-4 °C.

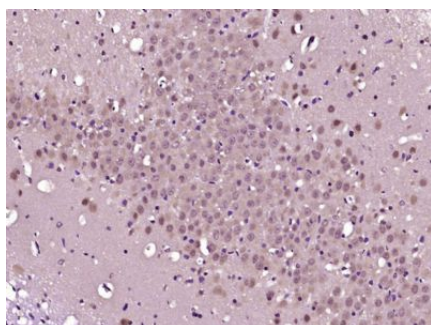
Protein Information

Name	FBXL4
Synonyms	FBL4, FBL5
Function	Substrate-recognition component of the mitochondria-localized SCF-FBXL4 ubiquitin E3 ligase complex that plays a role in the restriction of mitophagy by controlling the degradation of BNIP3 and NIX mitophagy receptors (PubMed: 36896912 , PubMed: 38992176). Rescues also mitochondrial injury through reverting hyperactivation of DRP1- mediated mitochondrial fission (By similarity).
Cellular Location	Cytoplasm. Nucleus. Mitochondrion outer membrane
Tissue Location	Expressed in heart, kidney, liver, lung, pancreas, and placenta, but not in skeletal muscle

Images



Paraformaldehyde-fixed, paraffin embedded (Human lung carcinoma); Antigen retrieval by boiling in sodium citrate buffer (pH6.0) for 15min; Block endogenous peroxidase by 3% hydrogen peroxide for 20 minutes; Blocking buffer (normal goat serum) at 37°C for 30min; Antibody incubation with (FbxL4) Polyclonal Antibody, Unconjugated (AP55077) at 1:400 overnight at 4°C, followed by operating according to SP Kit(Rabbit) (sp-0023) instructions and DAB staining.



Paraformaldehyde-fixed, paraffin embedded (Rat brain); Antigen retrieval by boiling in sodium citrate buffer (pH6.0) for 15min; Block endogenous peroxidase by 3% hydrogen peroxide for 20 minutes; Blocking buffer (normal goat serum) at 37°C for 30min; Antibody incubation with (FbxL4) Polyclonal Antibody, Unconjugated (AP55077) at 1:400 overnight at 4°C, followed by operating according to SP Kit(Rabbit) (sp-0023) instructions and DAB staining.

Please note: All products are 'FOR RESEARCH USE ONLY. NOT FOR USE IN DIAGNOSTIC OR THERAPEUTIC PROCEDURES'.