

CA095 Antibody (C-term)

Affinity Purified Rabbit Polyclonal Antibody (Pab)

Catalog # AP5512b

Product Information

Application	WB, E
Primary Accession	Q69YW2
Other Accession	NP_001003665.1
Reactivity	Human, Mouse
Host	Rabbit
Clonality	Polyclonal
Isotype	Rabbit IgG
Clone Names	RB27066
Calculated MW	15007
Antigen Region	114-141

Additional Information

Gene ID	375057
Other Names	Protein stum homolog, C1orf95
Target/Specificity	This CA095 antibody is generated from rabbits immunized with a KLH conjugated synthetic peptide between 114-141 amino acids from the C-terminal region of human CA095.
Dilution	WB~~1:1000 E~~Use at an assay dependent concentration.
Format	Purified polyclonal antibody supplied in PBS with 0.09% (W/V) sodium azide. This antibody is purified through a protein A column, followed by peptide affinity purification.
Storage	Maintain refrigerated at 2-8°C for up to 2 weeks. For long term storage store at -20°C in small aliquots to prevent freeze-thaw cycles.
Precautions	CA095 Antibody (C-term) is for research use only and not for use in diagnostic or therapeutic procedures.

Protein Information

Name	STUM (HGNC:30491)
Cellular Location	Membrane; Multi-pass membrane protein

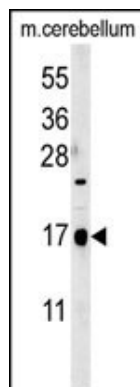
Background

C1ORF95 belongs to the SPEC3 family. The exact function of C1ORF95 remains unknown.

References

Gregory, S.G., et al. Nature 441(7091):315-321(2006)

Images



CA095 Antibody (C-term) (Cat.#AP5512b) western blot analysis in mouse cerebellum tissue lysates (35ug/lane). This demonstrates the CA095 antibody detected CA095 protein (arrow).

Please note: All products are 'FOR RESEARCH USE ONLY. NOT FOR USE IN DIAGNOSTIC OR THERAPEUTIC PROCEDURES'.