

GIYD2 Polyclonal Antibody

Purified Rabbit Polyclonal Antibody (Pab)

Catalog # AP55145

Product Information

Application	WB, IHC-P, IHC-F, IF, ICC, E
Primary Accession	Q9BQ83
Reactivity	Rat, Dog, Bovine
Host	Rabbit
Clonality	Polyclonal
Calculated MW	30771
Physical State	Liquid
Immunogen	KLH conjugated synthetic peptide derived from human GIYD2
Epitope Specificity	21-120/275
Isotype	IgG
Purity	affinity purified by Protein A
Buffer	0.01M TBS (pH7.4) with 1% BSA, 0.02% Proclin300 and 50% Glycerol.
SUBCELLULAR LOCATION	Nucleus.
SIMILARITY	Belongs to the SLX1 family. Contains 1 GIY-YIG domain. Contains 1 SLX1-type zinc finger.
SUBUNIT	Forms a heterodimer with SLX4.
Important Note	This product as supplied is intended for research use only, not for use in human, therapeutic or diagnostic applications.
Background Descriptions	This gene encodes a protein that is an important regulator of genome stability. The protein represents the catalytic subunit of the SLX1-SLX4 structure-specific endonuclease, which can resolve DNA secondary structures that are formed during repair and recombination processes. Two identical copies of this gene are located on the p arm of chromosome 16 due to a segmental duplication; this record represents the more telomeric copy. Alternative splicing results in multiple transcript variants. Read-through transcription also occurs between this gene and the downstream SULT1A4 (sulfotransferase family, cytosolic, 1A, phenol-preferring, member 4) gene.

Additional Information

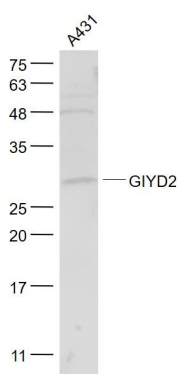
Gene ID	548593;79008
Other Names	Structure-specific endonuclease subunit SLX1 {ECO:0000255 HAMAP-Rule:MF_03100}, 3.1.-.- {ECO:0000255 HAMAP-Rule:MF_03100}, GIY-YIG domain-containing protein 1 {ECO:0000255 HAMAP-Rule:MF_03100}, SLX1A {ECO:0000255 HAMAP-Rule:MF_03100}
Dilution	WB=1:500-2000,IHC-P=1:100-500,IHC-F=1:100-500,ICC=1:100-500,IF=1:100-500,ELISA=1:5000-10000

Format	0.01M TBS(pH7.4) with 1% BSA, 0.09% (W/V) sodium azide and 50% Glyce
Storage	Store at -20 °C for one year. Avoid repeated freeze/thaw cycles. When reconstituted in sterile pH 7.4 0.01M PBS or diluent of antibody the antibody is stable for at least two weeks at 2-4 °C.

Protein Information

Name	SLX1A {ECO:0000255 HAMAP-Rule:MF_03100}
Function	Catalytic subunit of the SLX1-SLX4 structure-specific endonuclease that resolves DNA secondary structures generated during DNA repair and recombination. Has endonuclease activity towards branched DNA substrates, introducing single-strand cuts in duplex DNA close to junctions with ss-DNA. Has a preference for 5'-flap structures, and promotes symmetrical cleavage of static and migrating Holliday junctions (HJs). Resolves HJs by generating two pairs of ligatable, nicked duplex products.
Cellular Location	Nucleus {ECO:0000255 HAMAP-Rule:MF_03100, ECO:0000269 PubMed:19596236}

Images



Sample:
A431(Human) Cell Lysate at 30 ug
Primary: Anti- GIYD2 (AP55145) at 1/1000 dilution
Secondary: IRDye800CW Goat Anti-Rabbit IgG at 1/20000 dilution
Predicted band size: 31 kD
Observed band size: 31 kD

Please note: All products are 'FOR RESEARCH USE ONLY. NOT FOR USE IN DIAGNOSTIC OR THERAPEUTIC PROCEDURES'.