

# GOLGA7 Rabbit pAb

GOLGA7 Rabbit pAb

Catalog # AP55177

## Product Information

---

<b>Application</b>	IHC-P, IHC-F, IF
<b>Reactivity</b>	Mouse
<b>Predicted</b>	Human, Rat, Sheep
<b>Host</b>	Rabbit
<b>Clonality</b>	Polyclonal
<b>Calculated MW</b>	16 kDa
<b>Physical State</b>	Liquid
<b>Immunogen</b>	KLH conjugated synthetic peptide derived from human GOLGA7
<b>Epitope Specificity</b>	51-137/137
<b>Isotype</b>	IgG
<b>Purity</b>	affinity purified by Protein A
<b>Buffer</b>	0.01M TBS (pH7.4) with 1% BSA, 0.02% Proclin300 and 50% Glycerol.
<b>SUBCELLULAR LOCATION</b>	Golgi apparatus membrane; Lipid-anchor
<b>SIMILARITY</b>	Belongs to the ERF4 family.
<b>SUBUNIT</b>	Interacts with GOLGA3. Interacts with ZDHHC9.
<b>Post-translational modifications</b>	Palmitoylated on Cys-69 and Cys-72; which is required for Golgi localization and interaction with GOLGA3.
<b>Important Note</b>	This product as supplied is intended for research use only, not for use in human, therapeutic or diagnostic applications.
<b>Background Descriptions</b>	GOLGA7 is a multi-pass membrane protein belonging to the Erf4 family of proteins. It is the functional ortholog of the yeast Erf4 protein. Localizing to the Golgi apparatus, GOLGA7 is a widely expressed protein but its expression is absent from colon and thymus tissues. GOLGA7 is palmitoylated on two cysteine residues, and this palmitoylation is required for its interaction with golgin 160 and its Golgi-localization. GOLGA7 also forms a complex with ZDHHC9 and, together, these proteins function as a Ras palmitoyltransferase (Ras PAT) which is required for palmitoylation of H-Ras and N-Ras proteins. The palmitoylation of Ras proteins is essential for the trafficking of Ras proteins from the Golgi to the plasma membrane, thus implicating GOLGA7 in protein transport from the Golgi to the cell surface.

## Additional Information

---

<b>Other Names</b>	Golgin subfamily A member 7, Golgi complex-associated protein of 16 kDa, GOLGA7, GCP16
<b>Target/Specificity</b>	Expressed in all tissues except colon and thymus.
<b>Dilution</b>	IHC-P=1:100-500,IHC-F=1:100-500,IF=1:100-500
<b>Storage</b>	Store at -20 °C for one year. Avoid repeated freeze/thaw cycles. When

reconstituted in sterile pH 7.4 0.01M PBS or diluent of antibody the antibody is stable for at least two weeks at 2-4 °C.

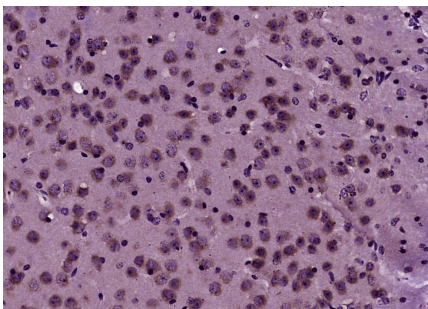
## Background

---

GOLGA7 is a multi-pass membrane protein belonging to the Erf4 family of proteins. It is the functional ortholog of the yeast Erf4 protein. Localizing to the Golgi apparatus, GOLGA7 is a widely expressed protein but its expression is absent from colon and thymus tissues. GOLGA7 is palmitoylated on two cysteine residues, and this palmitoylation is required for its interaction with golgin 160 and its Golgi-localization. GOLGA7 also forms a complex with ZDHHC9 and, together, these proteins function as a Ras palmitoyltransferase (Ras PAT) which is required for palmitoylation of H-Ras and N-Ras proteins. The palmitoylation of Ras proteins is essential for the trafficking of Ras proteins from the Golgi to the plasma membrane, thus implicating GOLGA7 in protein transport from the Golgi to the cell surface.

## Images

---



Paraformaldehyde-fixed, paraffin embedded (Mouse brain); Antigen retrieval by boiling in sodium citrate buffer (pH6.0) for 15min; Block endogenous peroxidase by 3% hydrogen peroxide for 20 minutes; Blocking buffer (normal goat serum) at 37°C for 30min; Antibody incubation with (GOLGA7) Polyclonal Antibody, Unconjugated (AP55177) at 1:400 overnight at 4°C, followed by operating according to SP Kit(Rabbit) (sp-0023) instructions and DAB staining.

Please note: All products are 'FOR RESEARCH USE ONLY. NOT FOR USE IN DIAGNOSTIC OR THERAPEUTIC PROCEDURES'.