

GPR21 Polyclonal Antibody

Purified Rabbit Polyclonal Antibody (Pab)

Catalog # AP55189

Product Information

Application	WB, IHC-P, IHC-F, IF, ICC, E
Primary Accession	Q99679
Reactivity	Pig, Bovine
Host	Rabbit
Clonality	Polyclonal
Calculated MW	39515
Physical State	Liquid
Immunogen	KLH conjugated synthetic peptide derived from human G protein coupled receptor 21
Epitope Specificity	1-100/349
Isotype	IgG
Purity	affinity purified by Protein A
Buffer	0.01M TBS (pH7.4) with 1% BSA, 0.02% Proclin300 and 50% Glycerol.
SUBCELLULAR LOCATION	Cell membrane: Multi-pass membrane protein.
Important Note	This product as supplied is intended for research use only, not for use in human, therapeutic or diagnostic applications.
Background Descriptions	G protein-coupled receptors (GPRs), also known as seven transmembrane receptors, heptahelical receptors or 7TM receptors, comprise a superfamily of proteins that play a role in many different stimulus-response pathways. G protein coupled receptors translate extracellular signals into intracellular signals (G protein activation) and they respond to a variety of signaling molecules, such as hormones and neurotransmitters. GPR21 is a 349 amino acid multi-pass membrane protein that functions as an orphan receptor and belongs to the GPR1 family. The gene encoding GPR21 maps to human chromosome 9, which houses over 900 genes and comprises nearly 4% of the human genome. Hereditary hemorrhagic telangiectasia, which is characterized by harmful vascular defects, and Familial dysautonomia, are both associated with chromosome 9.

Additional Information

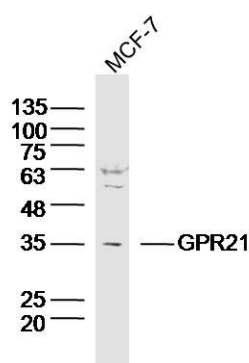
Gene ID	2844
Other Names	Probable G-protein coupled receptor 21, GPR21
Dilution	WB=1:500-2000,IHC-P=1:100-500,IHC-F=1:100-500,ICC=1:100-500,IF=1:100-500,ELISA=1:5000-10000
Format	0.01M TBS(pH7.4) with 1% BSA, 0.09% (W/V) sodium azide and 50% Glyce
Storage	Store at -20 °C for one year. Avoid repeated freeze/thaw cycles. When

reconstituted in sterile pH 7.4 0.01M PBS or diluent of antibody the antibody is stable for at least two weeks at 2-4 °C.

Protein Information

Name	GPR21
Function	Orphan receptor.
Cellular Location	Cell membrane; Multi-pass membrane protein.
Tissue Location	Not detected in the brain regions thalamus, putamen, caudate, frontal cortex, pons, hypothalamus, hippocampus

Images



Sample: MCF-7 (Human) cell Lysate at 40 ug
Primary: Anti-GPR21 (AP55189) at 1/300 dilution
Secondary: IRDye800CW Goat Anti-Rabbit IgG at 1/20000 dilution
Predicted band size: 38 kD
Observed band size: 35 kD

Please note: All products are 'FOR RESEARCH USE ONLY. NOT FOR USE IN DIAGNOSTIC OR THERAPEUTIC PROCEDURES'.