

ZBTB39 Polyclonal Antibody

Purified Rabbit Polyclonal Antibody (Pab)

Catalog # AP55207

Product Information

Application	WB, IHC-P, IHC-F, IF, ICC, E
Primary Accession	O15060
Reactivity	Rat, Dog, Bovine
Host	Rabbit
Clonality	Polyclonal
Calculated MW	79001
Physical State	Liquid
Immunogen	KLH conjugated synthetic peptide derived from human ZBTB39
Epitope Specificity	1-100/712
Isotype	IgG
Purity	affinity purified by Protein A
Buffer	0.01M TBS (pH7.4) with 1% BSA, 0.02% Proclin300 and 50% Glycerol.
SUBCELLULAR LOCATION	Nuclear
SIMILARITY	Belongs to the krueppel C2H2-type zinc-finger protein family. Contains 1 BTB (POZ) domain. Contains 8 C2H2-type zinc fingers.
Important Note	This product as supplied is intended for research use only, not for use in human, therapeutic or diagnostic applications.
Background Descriptions	ZBTB39 may be involved in transcriptional regulation. It belongs to the krueppel C2H2-type zinc-finger protein family and contains one BTB (POZ) domain and eight C2H2-type zinc fingers.

Additional Information

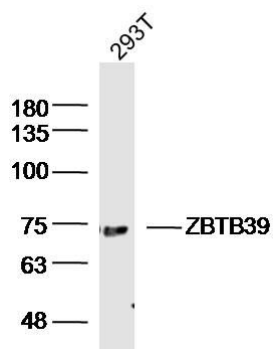
Gene ID	9880
Other Names	Zinc finger and BTB domain-containing protein 39, ZBTB39, KIAA0352
Dilution	WB=1:500-2000,IHC-P=1:100-500,IHC-F=1:100-500,ICC=1:100-500,IF=1:100-500,ELISA=1:5000-10000
Format	0.01M TBS(pH7.4) with 1% BSA, 0.09% (W/V) sodium azide and 50% Glyce
Storage	Store at -20 °C for one year. Avoid repeated freeze/thaw cycles. When reconstituted in sterile pH 7.4 0.01M PBS or diluent of antibody the antibody is stable for at least two weeks at 2-4 °C.

Protein Information

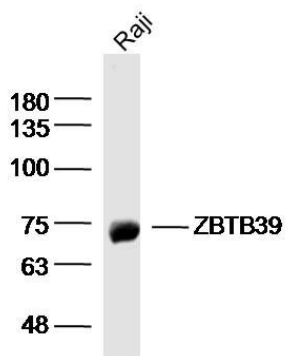
Name	ZBTB39
-------------	--------

Synonyms	KIAA0352
Function	May be involved in transcriptional regulation.
Cellular Location	Nucleus.

Images



Sample: 293T (human)cell Lysate at 40 ug
 Primary: Anti-ZBTB39(AP55207)at 1/300 dilution
 Secondary: IRDye800CW Goat Anti-RabbitIgG at 1/20000 dilution
 Predicted band size: 79 kD
 Observed band size: 75 kD



Sample: Raji (human)cell Lysate at 40 ug
 Primary: Anti- ZBTB39 (AP55207)at 1/300 dilution
 Secondary: IRDye800CW Goat Anti-RabbitIgG at 1/20000 dilution
 Predicted band size: 79 kD
 Observed band size: 75 kD

Please note: All products are 'FOR RESEARCH USE ONLY. NOT FOR USE IN DIAGNOSTIC OR THERAPEUTIC PROCEDURES'.