

# AP1M2 Polyclonal Antibody

Purified Rabbit Polyclonal Antibody (Pab)

Catalog # AP55228

## Product Information

---

|   |   |
|---|---|
| <b>Application</b>                      | WB, IHC-P, IHC-F, IF, ICC, E  |
| <b>Primary Accession</b>                | <a href="#">Q9Y6Q5</a>  |
| <b>Reactivity</b>                       | Pig, Bovine   |
| <b>Host</b>                             | Rabbit  |
| <b>Clonality</b>                        | Polyclonal  |
| <b>Calculated MW</b>                    | 48108   |
| <b>Physical State</b>                   | Liquid  |
| <b>Immunogen</b>                        | KLH conjugated synthetic peptide derived from human AP1M2   |
| <b>Epitope Specificity</b>              | 1-100/423   |
| <b>Isotype</b>                          | IgG   |
| <b>Purity</b>                           | affinity purified by Protein A  |
| <b>Buffer</b>                           | 0.01M TBS (pH7.4) with 1% BSA, 0.02% Proclin300 and 50% Glycerol.   |
| <b>SUBCELLULAR LOCATION</b>             | Golgi apparatus. Cytoplasmic vesicle > clathrin-coated vesicle membrane. Component of the coat surrounding the cytoplasmic face of coated vesicles located at the Golgi complex.  |
| <b>SIMILARITY</b>                       | Belongs to the adaptor complexes medium subunit family. Contains 1 MHD (mu homology) domain.  |
| <b>Post-translational modifications</b> | Phosphorylation of membrane-bound AP1M1/AP1M2 increases its affinity for sorting signals.   |
| <b>Important Note</b>                   | This product as supplied is intended for research use only, not for use in human, therapeutic or diagnostic applications.   |
| <b>Background Descriptions</b>          | Subunit of clathrin-associated adaptor protein complex 1 that plays a role in protein sorting in the trans-Golgi network (TGN) and endosomes. The AP complexes mediate the recruitment of clathrin to membranes and the recognition of sorting signals within the cytosolic tails of transmembrane cargo molecules. |

## Additional Information

---

|                    |  |
|--------------------|--|
| <b>Gene ID</b>     | 10053  |
| <b>Other Names</b> | AP-1 complex subunit mu-2, AP-mu chain family member mu1B, Adaptor protein complex AP-1 subunit mu-2, Adaptor-related protein complex 1 subunit mu-2, Clathrin assembly protein complex 1 mu-2 medium chain 2, Golgi adaptor HA1/AP1 adaptin mu-2 subunit, Mu-adaptin 2, Mu1B-adaptin, AP1M2 |
| <b>Dilution</b>    | WB=1:500-2000,IHC-P=1:100-500,IHC-F=1:100-500,ICC=1:100-500,IF=1:100-500,ELISA=1:5000-10000  |
| <b>Format</b>      | 0.01M TBS(pH7.4) with 1% BSA, 0.09% (W/V) sodium azide and 50% Glyce   |

**Storage**

Store at -20 °C for one year. Avoid repeated freeze/thaw cycles. When reconstituted in sterile pH 7.4 0.01M PBS or diluent of antibody the antibody is stable for at least two weeks at 2-4 °C.

**Protein Information**

---

**Name**

AP1M2

**Function**

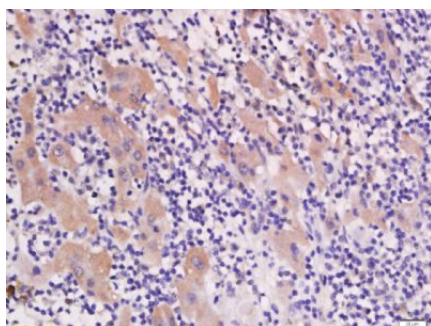
Subunit of clathrin-associated adaptor protein complex 1 that plays a role in protein sorting in the trans-Golgi network (TGN) and endosomes. The AP complexes mediate the recruitment of clathrin to membranes and the recognition of sorting signals within the cytosolic tails of transmembrane cargo molecules.

**Cellular Location**

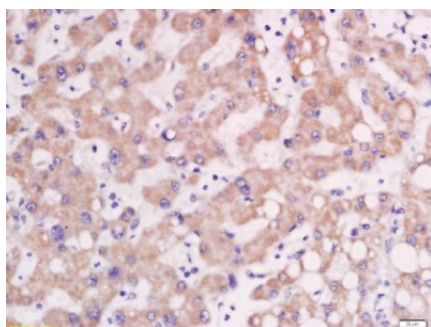
Golgi apparatus. Cytoplasmic vesicle, clathrin- coated vesicle membrane; Peripheral membrane protein; Cytoplasmic side Note=Component of the coat surrounding the cytoplasmic face of coated vesicles located at the Golgi complex

**Images**

---



Tissue/cell: human liver carcinoma; 4%  
Paraformaldehyde-fixed and paraffin-embedded;  
Antigen retrieval: citrate buffer ( 0.01M, pH 6.0 ), Boiling bathing for 15min; Block endogenous peroxidase by 3% Hydrogen peroxide for 30min; Blocking buffer (normal goat serum,C-0005) at 37°C for 20 min;  
Incubation: Anti-AP1M2 Polyclonal Antibody, Unconjugated(AP55228) 1:200, overnight at 4°C, followed by conjugation to the secondary antibody(SP-0023) and DAB(C-0010) staining



Tissue/cell: human liver carcinoma; 4%  
Paraformaldehyde-fixed and paraffin-embedded;  
Antigen retrieval: citrate buffer ( 0.01M, pH 6.0 ), Boiling bathing for 15min; Block endogenous peroxidase by 3% Hydrogen peroxide for 30min; Blocking buffer (normal goat serum,C-0005) at 37°C for 20 min;  
Incubation: Anti-AP1M2 Polyclonal Antibody, Unconjugated(AP55228) 1:200, overnight at 4°C, followed by conjugation to the secondary antibody(SP-0023) and DAB(C-0010) staining

Please note: All products are 'FOR RESEARCH USE ONLY. NOT FOR USE IN DIAGNOSTIC OR THERAPEUTIC PROCEDURES'.