

SKAP55 Polyclonal Antibody

Purified Rabbit Polyclonal Antibody (Pab)

Catalog # AP55250

Product Information

Application	IHC-P, IHC-F, IF, ICC, E
Primary Accession	Q86WV1
Reactivity	Rat, Pig, Dog
Host	Rabbit
Clonality	Polyclonal
Calculated MW	41432
Physical State	Liquid
Immunogen	KLH conjugated synthetic peptide derived from human SKAP55
Epitope Specificity	101-200/359
Isotype	IgG
Purity	affinity purified by Protein A
Buffer	0.01M TBS (pH7.4) with 1% BSA, 0.02% Proclin300 and 50% Glycerol.
SUBCELLULAR LOCATION	Cytoplasm. Nucleus. Cell membrane. Upon T-cell stimulation, translocates to lipid rafts at the cell membrane.
SIMILARITY	Belongs to the SKAP family. Contains 1 PH domain. Contains 1 SH3 domain.
Post-translational modifications	Phosphorylated on tyrosines. Phosphorylation by FYN on Tyr-271 is required for GRB2 interaction. Phosphorylation by FYN on Tyr-295 abolishes interaction with FYB. Tyr-232 is dephosphorylated by PTPRC.
Important Note	This product as supplied is intended for research use only, not for use in human, therapeutic or diagnostic applications.
Background Descriptions	Fyb (Fyn binding protein) and the anchoring proteins SKAP55 and SKAP55-R (SKAP55-related protein) associate with the tyrosine kinase p59fyn. SKAP55 and SKAP55-R bind to Fyb through their SH3 domains and function as substrates for p59Fyn in resting T cells. SKAP55 contains an N-terminal pleckstrin homology domain and a C-terminal SH3 domain binding motif of adjacent arginine and lysine residues followed by tandem tyrosines. SKAP55-R, similar in overall structure to SKAP55, contains a coiled-coil N-terminal domain. SKAP55 associates with SLAP-130, another component of the Fyn complex, which plays a role in the regulation of signaling events initiated by lymphocyte antigen receptors leading up to T cell activation. The human SKAP55 gene maps to chromosome 17q21.32 and encodes a 359 amino acid protein.

Additional Information

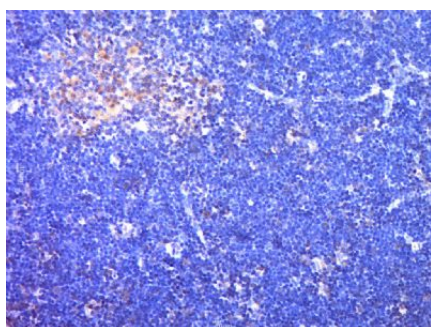
Gene ID	8631
Other Names	Src kinase-associated phosphoprotein 1, Src family-associated phosphoprotein 1, Src kinase-associated phosphoprotein of 55 kDa, SKAP-55, pp55, SKAP1, SCAP1, SKAP55

Target/Specificity	Highly expressed in thymocytes and peripheral blood lymphocytes. Also expressed in spleen cells and testis. Present in T-cells (at protein level).
Dilution	IHC-P=1:100-500,IHC-F=1:100-500,ICC=1:100-500,IF=1:100-500,ELISA=1:5000-10000
Format	0.01M TBS(pH7.4) with 1% BSA, 0.09% (W/V) sodium azide and 50% Glycerol
Storage	Store at -20 °C for one year. Avoid repeated freeze/thaw cycles. When reconstituted in sterile pH 7.4 0.01M PBS or diluent of antibody the antibody is stable for at least two weeks at 2-4 °C.

Protein Information

Name	SKAP1
Synonyms	SCAP1, SKAP55
Function	Positively regulates T-cell receptor signaling by enhancing the MAP kinase pathway. Required for optimal conjugation between T- cells and antigen-presenting cells by promoting the clustering of integrin ITGA2 on the surface of T-cells. May be involved in high affinity immunoglobulin epsilon receptor signaling in mast cells.
Cellular Location	Cytoplasm. Nucleus. Cell membrane. Note=Upon T- cell stimulation, translocates to lipid rafts at the cell membrane
Tissue Location	Highly expressed in thymocytes and peripheral blood lymphocytes. Also expressed in spleen cells and testis. Present in T- cells (at protein level).

Images



Paraformaldehyde-fixed, paraffin embedded (Rat thymus); Antigen retrieval by boiling in sodium citrate buffer (pH6.0) for 15min; Block endogenous peroxidase by 3% hydrogen peroxide for 20 minutes; Blocking buffer (normal goat serum) at 37°C for 30min; Antibody incubation with (SKAP55) Polyclonal Antibody, Unconjugated (AP55250) at 1:400 overnight at 4°C, followed by a conjugated secondary (sp-0023) for 20 minutes and DAB staining.

Please note: All products are 'FOR RESEARCH USE ONLY. NOT FOR USE IN DIAGNOSTIC OR THERAPEUTIC PROCEDURES'.