

Claudin 23 Polyclonal Antibody

Purified Rabbit Polyclonal Antibody (Pab)

Catalog # AP55268

Product Information

Application	IHC-P, IHC-F, IF, ICC, E
Primary Accession	Q96B33
Reactivity	Rat, Pig, Dog, Bovine
Host	Rabbit
Clonality	Polyclonal
Calculated MW	31915
Physical State	Liquid
Immunogen	KLH conjugated synthetic peptide derived from human Claudin 23
Epitope Specificity	25-81/292
Isotype	IgG
Purity	affinity purified by Protein A
Buffer	0.01M TBS (pH7.4) with 1% BSA, 0.02% Proclin300 and 50% Glycerol.
SUBCELLULAR LOCATION	Integral membrane protein. Tight junctions
SIMILARITY	Belongs to the claudin family.
Important Note	This product as supplied is intended for research use only, not for use in human, therapeutic or diagnostic applications.
Background Descriptions	<p>The claudin superfamily consists of structurally related proteins that are important structural and functional components of tight junctions. Claudin-23, also known as CLDN23 or CLDNL, is a 292 amino acid multi-pass membrane protein that localizes to cell junctions and belongs to the claudin family. Expressed in stomach and placenta, as well as in germinal center B-cells, claudin-23 is thought to exhibit calcium-dependent cell-adhesion activity through which it plays an essential role in tight junction-specific obliteration of the intercellular space. Human claudin-23 shares 80% sequence similarity with its mouse counterpart, suggesting a conserved role between species. Overexpression of claudin-23 is associated with colon tumors, implicating claudin-23 as a possible metastasis factor.</p>

Additional Information

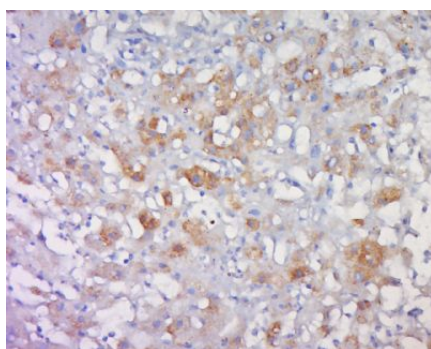
Gene ID	137075
Other Names	Claudin-23, CLDN23
Dilution	IHC-P=1:100-500,IHC-F=1:100-500,ICC=1:100-500,IF=1:100-500,ELISA=1:5000-10000
Format	0.01M TBS(pH7.4) with 1% BSA, 0.09% (W/V) sodium azide and 50% Glyce
Storage	Store at -20 °C for one year. Avoid repeated freeze/thaw cycles. When reconstituted in sterile pH 7.4 0.01M PBS or diluent of antibody the antibody

is stable for at least two weeks at 2-4 °C.

Protein Information

Name	CLDN23
Function	Plays a major role in tight junction-specific obliteration of the intercellular space, through calcium-independent cell-adhesion activity.
Cellular Location	Cell junction, tight junction. Cell membrane; Multi-pass membrane protein
Tissue Location	Expressed in germinal center B-cells, placenta, stomach as well as in colon tumor.

Images



Tissue/cell: human liver cancer; 4%
Paraformaldehyde-fixed and paraffin-embedded;
Antigen retrieval: citrate buffer (0.01M, pH 6.0), Boiling bathing for 15min; Block endogenous peroxidase by 3% Hydrogen peroxide for 30min; Blocking buffer (normal goat serum,C-0005) at 37°C for 20 min;
Incubation: Anti-Claudin 23 Polyclonal Antibody, Unconjugated(AP55268) 1:500, overnight at 4°C, followed by conjugation to the secondary antibody(SP-0023) and DAB(C-0010) staining

Please note: All products are 'FOR RESEARCH USE ONLY. NOT FOR USE IN DIAGNOSTIC OR THERAPEUTIC PROCEDURES'.