

# C19orf50 Polyclonal Antibody

Purified Rabbit Polyclonal Antibody (Pab)

Catalog # AP55287

## Product Information

---

<b>Application</b>	IHC-P, IHC-F, IF, ICC, E
<b>Primary Accession</b>	<a href="#">Q9BQD3</a>
<b>Reactivity</b>	Rat, Pig, Bovine
<b>Host</b>	Rabbit
<b>Clonality</b>	Polyclonal
<b>Calculated MW</b>	19668
<b>Physical State</b>	Liquid
<b>Immunogen</b>	KLH conjugated synthetic peptide derived from human C19orf50
<b>Epitope Specificity</b>	51-150/176
<b>Isotype</b>	IgG
<b>Purity</b>	affinity purified by Protein A
<b>Buffer</b>	0.01M TBS (pH7.4) with 1% BSA, 0.02% Proclin300 and 50% Glycerol.
<b>SIMILARITY</b>	Belongs to the KXD1 family.
<b>Important Note</b>	This product as supplied is intended for research use only, not for use in human, therapeutic or diagnostic applications.
<b>Background Descriptions</b>	C19orf50 is a 179 amino acid protein that is encoded by a gene located on human chromosome 19. Chromosome 19 consists of approximately 63 million bases and makes up over 2% of human genomic DNA. Chromosome 19 includes a diversity of interesting genes and is recognized for having the greatest gene density of the human chromosomes. It is the genetic home for a number of immunoglobulin superfamily members including the killer cell and leukocyte Ig-like receptors, a number of ICAMs, the CEACAM and PSG family, and Fcα receptors. Key genes for eye color and hair color also map to chromosome 19. Peutz-Jeghers syndrome, spinocerebellar ataxia type 6, the stroke disorder CADASIL, hypercholesterolemia and insulin-dependent diabetes have been linked to chromosome 19. Translocations with chromosome 19 and chromosome 14 can be seen in some lymphoproliferative disorders and typically involve the proto-oncogene BCL3.

## Additional Information

---

<b>Gene ID</b>	79036
<b>Other Names</b>	KxDL motif-containing protein 1, KXD1, C19orf50
<b>Dilution</b>	IHC-P=1:100-500,IHC-F=1:100-500,ICC=1:100-500,IF=1:100-500,ELISA=1:5000-10000
<b>Format</b>	0.01M TBS(pH7.4) with 1% BSA, 0.09% (W/V) sodium azide and 50% Glyce
<b>Storage</b>	Store at -20 °C for one year. Avoid repeated freeze/thaw cycles. When

reconstituted in sterile pH 7.4 0.01M PBS or diluent of antibody the antibody is stable for at least two weeks at 2-4 °C.

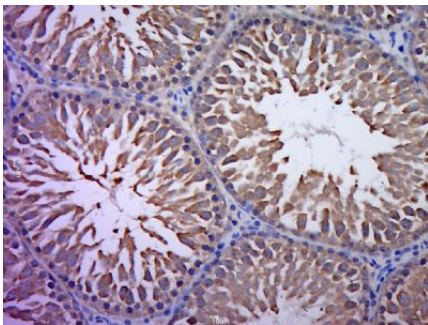
## Protein Information

---

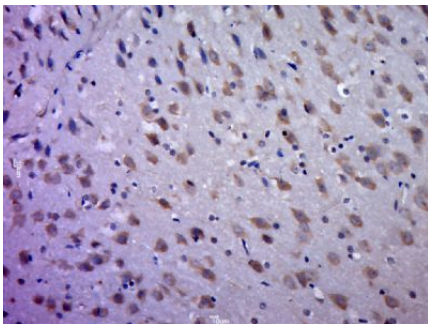
<b>Name</b>	KXD1
<b>Synonyms</b>	C19orf50
<b>Function</b>	As part of the BORC complex may play a role in lysosomes movement and localization at the cell periphery. Associated with the cytosolic face of lysosomes, the BORC complex may recruit ARL8B and couple lysosomes to microtubule plus-end-directed kinesin motor (PubMed: <a href="#">25898167</a> ). May be involved in the biogenesis of lysosome- related organelles such as melanosomes (By similarity).
<b>Cellular Location</b>	Lysosome membrane.

## Images

---



Paraformaldehyde-fixed, paraffin embedded (Rat testis); Antigen retrieval by boiling in sodium citrate buffer (pH6.0) for 15min; Block endogenous peroxidase by 3% hydrogen peroxide for 20 minutes; Blocking buffer (normal goat serum) at 37°C for 30min; Antibody incubation with (Chromosome 19 open reading frame 50; C19orf50) Polyclonal Antibody, Unconjugated (AP55287) at 1:400 overnight at 4°C, followed by a conjugated secondary (sp-0023) for 20 minutes and DAB staining.



Paraformaldehyde-fixed, paraffin embedded (Rat brain); Antigen retrieval by boiling in sodium citrate buffer (pH6.0) for 15min; Block endogenous peroxidase by 3% hydrogen peroxide for 20 minutes; Blocking buffer (normal goat serum) at 37°C for 30min; Antibody incubation with (Chromosome 19 open reading frame 50; C19orf50) Polyclonal Antibody, Unconjugated (AP55287) at 1:400 overnight at 4°C, followed by a conjugated secondary (sp-0023) for 20 minutes and DAB staining.

Please note: All products are 'FOR RESEARCH USE ONLY. NOT FOR USE IN DIAGNOSTIC OR THERAPEUTIC PROCEDURES'.