

CHST3 Rabbit pAb

CHST3 Rabbit pAb
Catalog # AP55347

Product Information

| | |
|---|--|
| Application | WB, IHC-P, IHC-F, IF |
| Primary Accession | Q7LGC8 |
| Reactivity | Human, Mouse |
| Host | Rabbit |
| Clonality | Polyclonal |
| Calculated MW | 54706 |
| Physical State | Liquid |
| Immunogen | KLH conjugated synthetic peptide derived from human CHST3 |
| Epitope Specificity | 21-120/479 |
| Isotype | IgG |
| Purity | affinity purified by Protein A |
| Buffer | 0.01M TBS (pH7.4) with 1% BSA, 0.02% Proclin300 and 50% Glycerol. |
| SUBCELLULAR LOCATION | Golgi apparatus membrane. |
| SIMILARITY | Belongs to the sulfotransferase 1 family. Gal/GlcNAc/GalNAc subfamily. |
| Post-translational modifications | Widely expressed in adult tissues. Expressed in heart, placenta, skeletal muscle and pancreas. Also expressed in various immune tissues such as spleen, lymph node, thymus and appendix. |
| DISEASE | Defects in CHST3 are a cause of spondyloepiphyseal dysplasia with congenital joint dislocations (SEDC-JD) [MIM:143095]. A bone dysplasia clinically characterized by dislocation of the knees and/or hips at birth, clubfoot, elbow joint dysplasia with subluxation and limited extension, short stature, and progressive kyphosis developing in late childhood. The disorder is usually evident at birth, with short stature and multiple joint dislocations or subluxations that dominate the neonatal clinical and radiographic picture. During childhood, the dislocations improve, both spontaneously and with surgical treatment, and features of spondyloepiphyseal dysplasia become apparent, leading to arthritis of the hips and spine with intervertebral disk degeneration, rigid kyphoscoliosis, and trunk shortening by late childhood. |
| Important Note | This product as supplied is intended for research use only, not for use in human, therapeutic or diagnostic applications. |
| Background Descriptions | This gene encodes an enzyme which catalyzes the sulfation of chondroitin, a proteoglycan found in the extracellular matrix and most cells which is involved in cell migration and differentiation. Mutations in this gene are associated with spondylepiphyseal dysplasia and humerospinal dysostosis. [provided by RefSeq, Mar 2009] |

Additional Information

| | |
|--------------------|--|
| Gene ID | 9469 |
| Other Names | Carbohydrate sulfotransferase 3, 2.8.2.17, 2.8.2.21, Chondroitin |

6-O-sulfotransferase 1, C6ST-1, Chondroitin 6-sulfotransferase, C6ST, Galactose/N-acetylglucosamine/N-acetylglucosamine 6-O-sulfotransferase 0, GST-0, CHST3

Dilution

WB=1:500-2000,IHC-P=1:100-500,IHC-F=1:100-500,IF=1:100-500

Storage

Store at -20 °C for one year. Avoid repeated freeze/thaw cycles. When reconstituted in sterile pH 7.4 0.01M PBS or diluent of antibody the antibody is stable for at least two weeks at 2-4 °C.

Protein Information

Name

CHST3

Function

Sulfotransferase that utilizes 3'-phospho-5'-adenylyl sulfate (PAPS) as sulfonate donor to catalyze the transfer of sulfate to position 6 of the N-acetylgalactosamine (GalNAc) residue of chondroitin (PubMed:[15215498](#), PubMed:[9714738](#), PubMed:[9883891](#)). Chondroitin sulfate constitutes the predominant proteoglycan present in cartilage and is distributed on the surfaces of many cells and extracellular matrices (PubMed:[9714738](#)). Catalyzes with a lower efficiency the sulfation of Gal residues of keratan sulfate, another glycosaminoglycan (PubMed:[9714738](#)). Can also catalyze the sulfation of the Gal residues in sialyl N-acetyllactosamine (sialyl LacNAc) oligosaccharides (By similarity). May play a role in the maintenance of naive T-lymphocytes in the spleen (By similarity).

Cellular Location

Golgi apparatus membrane; Single- pass type II membrane protein

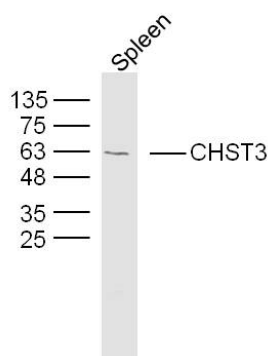
Tissue Location

Widely expressed in adult tissues. Expressed in heart, placenta, skeletal muscle and pancreas. Also expressed in various immune tissues such as spleen, lymph node, thymus and appendix

Background

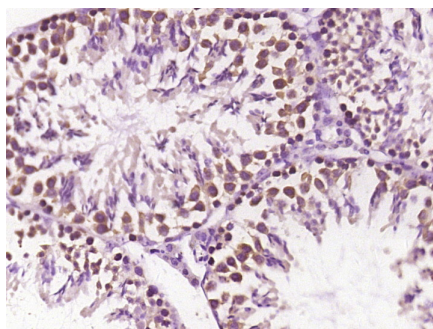
This gene encodes an enzyme which catalyzes the sulfation of chondroitin, a proteoglycan found in the extracellular matrix and most cells which is involved in cell migration and differentiation. Mutations in this gene are associated with spondylepiphyseal dysplasia and humerospinal dysostosis. [provided by RefSeq, Mar 2009]

Images



Sample: Spleen (Mouse) Lysate at 40 ug
Primary: Anti-CHST3(AP55347) at 1/300 dilution
Secondary: IRDye800CW Goat Anti-Rabbit IgG at 1/20000 dilution
Predicted band size: 55 kD
Observed band size: 60 kD

Paraformaldehyde-fixed, paraffin embedded (mouse)



testis tissue); Antigen retrieval by boiling in sodium citrate buffer (pH6.0) for 15min; Block endogenous peroxidase by 3% hydrogen peroxide for 20 minutes; Blocking buffer (normal goat serum) at 37°C for 30min; Antibody incubation with (CHST3) Polyclonal Antibody, Unconjugated (AP55347) at 1:400 overnight at 4°C, followed by operating according to SP Kit(Rabbit) (sp-0023) instructions and DAB staining.

Please note: All products are 'FOR RESEARCH USE ONLY. NOT FOR USE IN DIAGNOSTIC OR THERAPEUTIC PROCEDURES'.