

CPEB2 Polyclonal Antibody

Purified Rabbit Polyclonal Antibody (Pab)

Catalog # AP55384

Product Information

Application	IHC-P, IHC-F, IF, ICC, E
Primary Accession	Q7Z5Q1
Reactivity	Rat, Pig, Bovine
Host	Rabbit
Clonality	Polyclonal
Calculated MW	64944
Physical State	Liquid
Immunogen	KLH conjugated synthetic peptide derived from human CPEB2
Epitope Specificity	481-589/589
Purity	affinity purified by Protein A
Buffer	0.01M TBS (pH7.4) with 1% BSA, 0.02% Proclin300 and 50% Glycerol.
SUBCELLULAR LOCATION	Cytoplasmic
SIMILARITY	Belongs to the RRM CPEB family. Contains 2 RRM (RNA recognition motif) domains.
Important Note	This product as supplied is intended for research use only, not for use in human, therapeutic or diagnostic applications.
Background Descriptions	The protein encoded by this gene is highly similar to cytoplasmic polyadenylation element binding protein (CPEB), an mRNA-binding protein that regulates cytoplasmic polyadenylation of mRNA as a trans factor in oogenesis and spermatogenesis. Studies of the similar gene in mice suggested a possible role of this protein in transcriptionally inactive haploid spermatids. Alternatively spliced transcript variants encoding distinct isoforms have been described. [provided by RefSeq, Jul 2008]

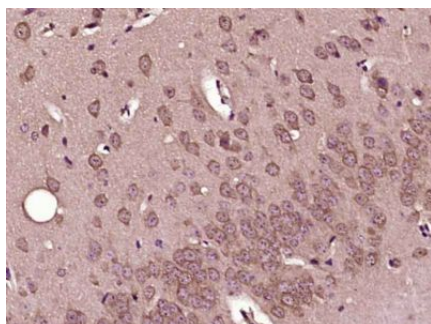
Additional Information

Gene ID	132864
Other Names	Cytoplasmic polyadenylation element-binding protein 2, CPE-BP2, CPE-binding protein 2, hCPEB-2, CPEB2
Dilution	IHC-P=1:100-500, IHC-F=1:100-500, ICC=1:100-500, IF=1:100-500, ELISA=1:5000-10000
Format	0.01M TBS(pH7.4) with 1% BSA, 0.09% (W/V) sodium azide and 50% Glyce
Storage	Store at -20 °C for one year. Avoid repeated freeze/thaw cycles. When reconstituted in sterile pH 7.4 0.01M PBS or diluent of antibody the antibody is stable for at least two weeks at 2-4 °C.

Protein Information

Name	CPEB2
Function	May play a role in translational regulation of stored mRNAs in transcriptionally inactive haploid spermatids. Binds to poly(U) RNA oligomers (By similarity). Required for cell cycle progression, specifically for the transition from metaphase to anaphase (PubMed: 26398195).
Cellular Location	Cytoplasm {ECO:0000250 UniProtKB:Q812E0}.

Images



Paraformaldehyde-fixed, paraffin embedded (Mouse brain); Antigen retrieval by boiling in sodium citrate buffer (pH6.0) for 15min; Block endogenous peroxidase by 3% hydrogen peroxide for 20 minutes; Blocking buffer (normal goat serum) at 37°C for 30min; Antibody incubation with (CPEB2) Polyclonal Antibody, Unconjugated (AP55384) at 1:400 overnight at 4°C, followed by operating according to SP Kit(Rabbit) (sp-0023) instructions and DAB staining.

Please note: All products are 'FOR RESEARCH USE ONLY. NOT FOR USE IN DIAGNOSTIC OR THERAPEUTIC PROCEDURES'.