

CREB5 Polyclonal Antibody

Purified Rabbit Polyclonal Antibody (Pab)

Catalog # AP55398

Product Information

Application	WB, IHC-P, IHC-F, IF, ICC, E
Primary Accession	Q02930
Reactivity	Rat, Dog, Bovine
Host	Rabbit
Clonality	Polyclonal
Calculated MW	56918
Physical State	Liquid
Immunogen	KLH conjugated synthetic peptide derived from human CREB5
Epitope Specificity	21-120/508
Isotype	IgG
Purity	affinity purified by Protein A
Buffer	0.01M TBS (pH7.4) with 1% BSA, 0.02% Proclin300 and 50% Glycerol.
SUBCELLULAR LOCATION	Nucleus.
SIMILARITY	Belongs to the bZIP family. Contains 1 bZIP domain. Contains 1 C2H2-type zinc finger.
SUBUNIT	Binds DNA as a homodimer or as a heterodimer with JUN or ATF2/CREBP1.
Important Note	This product as supplied is intended for research use only, not for use in human, therapeutic or diagnostic applications.
Background Descriptions	The product of this gene belongs to the CRE (cAMP response element)-binding protein family. Members of this family contain zinc-finger and bZIP DNA-binding domains. The encoded protein specifically binds to CRE as a homodimer or a heterodimer with c-Jun or CRE-BP1, and functions as a CRE-dependent trans-activator. Alternatively spliced transcript variants encoding different isoforms have been identified. [provided by RefSeq, Jul 2008]

Additional Information

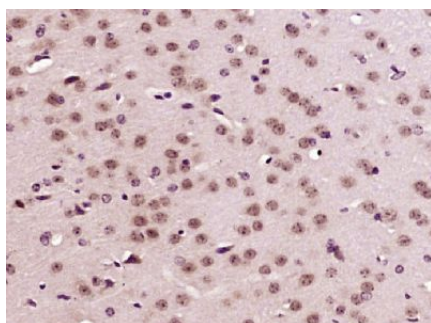
Gene ID	9586
Other Names	Cyclic AMP-responsive element-binding protein 5, CREB-5, cAMP-responsive element-binding protein 5, cAMP-response element-binding protein A, CRE-BPa, CREB5, CREBPA
Dilution	WB=1:500-2000,IHC-P=1:100-500,IHC-F=1:100-500,ICC=1:100-500,IF=1:100-500,ELISA=1:5000-10000
Format	0.01M TBS(pH7.4) with 1% BSA, 0.09% (W/V) sodium azide and 50% Glyce
Storage	Store at -20 °C for one year. Avoid repeated freeze/thaw cycles. When reconstituted in sterile pH 7.4 0.01M PBS or diluent of antibody the antibody

is stable for at least two weeks at 2-4 °C.

Protein Information

Name	CREB5
Synonyms	CREBPA
Function	Binds to the cAMP response element and activates transcription.
Cellular Location	Nucleus.

Images



Paraformaldehyde-fixed, paraffin embedded (Mouse brain); Antigen retrieval by boiling in sodium citrate buffer (pH6.0) for 15min; Block endogenous peroxidase by 3% hydrogen peroxide for 20 minutes; Blocking buffer (normal goat serum) at 37°C for 30min; Antibody incubation with (CREB5) Polyclonal Antibody, Unconjugated (AP55398) at 1:400 overnight at 4°C, followed by operating according to SP Kit(Rabbit) (sp-0023) instructions and DAB staining.

Please note: All products are 'FOR RESEARCH USE ONLY. NOT FOR USE IN DIAGNOSTIC OR THERAPEUTIC PROCEDURES'.