

CRISP10 Polyclonal Antibody

Purified Rabbit Polyclonal Antibody (Pab)

Catalog # AP55401

Product Information

Application	WB, IHC-P, IHC-F, IF, ICC, E
Primary Accession	Q9H336
Reactivity	Rat, Pig, Dog, Bovine
Host	Rabbit
Clonality	Polyclonal
Calculated MW	56888
Physical State	Liquid
Immunogen	KLH conjugated synthetic peptide derived from human CRISP10
Epitope Specificity	301-400/500
Isotype	IgG
Purity	affinity purified by Protein A
Buffer	0.01M TBS (pH7.4) with 1% BSA, 0.02% Proclin300 and 50% Glycerol.
SUBCELLULAR LOCATION	Secreted.
SIMILARITY	Belongs to the CRISP family. Contains 2 LCCL domains.
Important Note	This product as supplied is intended for research use only, not for use in human, therapeutic or diagnostic applications.
Background Descriptions	Cysteine-rich secretory proteins (CRISPs) represent a family of evolutionarily conserved proteins which may play a role in the innate immune system and are transcriptionally regulated by androgens in several tissues. CRISP proteins are highly expressed in the mammalian reproductive tract and in the venom secretory ducts of some reptiles. CRISP-10 (cysteine-rich secretory protein 10), also known as CocoaCrisp and Trypsin inhibitor HI, is a 500 amino acid protein containing 2 LCCL domains, which are thought to function as autonomous folding domains used to construct modular proteins through exon shuffling. CRISP-10 differs from other CRISP proteins in that it does not contain the 10 conserved cysteine residues or ICR domains that are usually conserved throughout the CRISP family.

Additional Information

Gene ID	83690
Other Names	Cysteine-rich secretory protein LCCL domain-containing 1, CocoaCrisp, Cysteine-rich secretory protein 10, CRISP-10, LCCL domain-containing cysteine-rich secretory protein 1, Trypsin inhibitor HI, CRISPLD1, CRISP10, LCRISP1
Dilution	WB=1:500-2000,IHC-P=1:100-500,IHC-F=1:100-500,ICC=1:100-500,IF=1:100-500,ELISA=1:5000-10000
Format	0.01M TBS(pH7.4) with 1% BSA, 0.09% (W/V) sodium azide and 50% Glyce

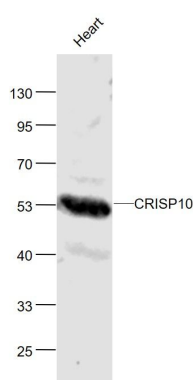
Storage

Store at -20 °C for one year. Avoid repeated freeze/thaw cycles. When reconstituted in sterile pH 7.4 0.01M PBS or diluent of antibody the antibody is stable for at least two weeks at 2-4 °C.

Protein Information

Name	CRISPLD1
Synonyms	CRISP10, LCRISP1
Cellular Location	Secreted.

Images



Sample:

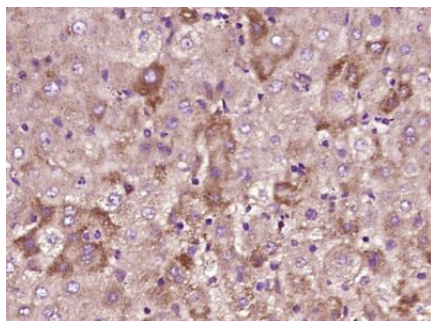
Heart(Mouse) Lysate at 40 ug

Primary:Anti-CRISP10 (AP55401) at 1/1000 dilution

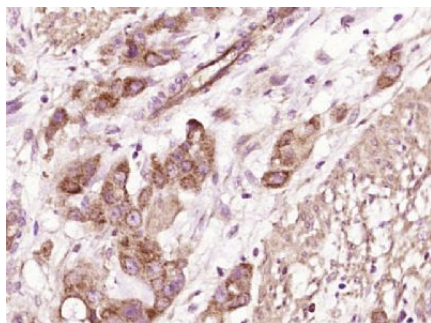
Secondary: IRDye800CW Goat Anti-Rabbit IgG at 1/20000 dilution

Predicted band size: 54 kD

Observed band size: 54 kD



Paraformaldehyde-fixed, paraffin embedded (Human liver cancer); Antigen retrieval by boiling in sodium citrate buffer (pH6.0) for 15min; Block endogenous peroxidase by 3% hydrogen peroxide for 20 minutes; Blocking buffer (normal goat serum) at 37°C for 30min; Antibody incubation with (CRISP10) Polyclonal Antibody, Unconjugated (AP55401) at 1:400 overnight at 4°C, followed by operating according to SP Kit(Rabbit) (sp-0023) instructions and DAB staining.



Paraformaldehyde-fixed, paraffin embedded (Human stomach cancer); Antigen retrieval by boiling in sodium citrate buffer (pH6.0) for 15min; Block endogenous peroxidase by 3% hydrogen peroxide for 20 minutes; Blocking buffer (normal goat serum) at 37°C for 30min; Antibody incubation with (CRISP10) Polyclonal Antibody, Unconjugated (AP55401) at 1:400 overnight at 4°C, followed by operating according to SP Kit(Rabbit) (sp-0023) instructions and DAB staining.

Please note: All products are 'FOR RESEARCH USE ONLY. NOT FOR USE IN DIAGNOSTIC OR THERAPEUTIC PROCEDURES'.