

# CSAG1 Polyclonal Antibody

Purified Rabbit Polyclonal Antibody (Pab)

Catalog # AP55413

## Product Information

---

<b>Application</b>	IHC-P, IHC-F, IF, ICC, E
<b>Primary Accession</b>	<a href="#">Q6PB30</a>
<b>Reactivity</b>	Human
<b>Host</b>	Rabbit
<b>Clonality</b>	Polyclonal
<b>Calculated MW</b>	8697
<b>Physical State</b>	Liquid
<b>Immunogen</b>	KLH conjugated synthetic peptide derived from human CSAG1
<b>Epitope Specificity</b>	22-78/78
<b>Isotype</b>	IgG
<b>Purity</b>	affinity purified by Protein A
<b>Buffer</b>	0.01M TBS (pH7.4) with 1% BSA, 0.02% Proclin300 and 50% Glycerol.
<b>SUBCELLULAR LOCATION</b>	Expressed in chondrosarcoma, melanoma, cartilage and testis, but not in other normal tissues.
<b>Important Note</b>	This product as supplied is intended for research use only, not for use in human, therapeutic or diagnostic applications.
<b>Background Descriptions</b>	This gene encodes a member of a family of tumor antigens. The protein is expressed in chondrosarcomas, but may also be expressed in normal tissues such as testis. Alternative splicing of this gene results in two transcript variants encoding the same protein. [provided by RefSeq, Jul 2008]

## Additional Information

---

<b>Gene ID</b>	158511
<b>Other Names</b>	Putative chondrosarcoma-associated gene 1 protein, Cancer/testis antigen 24.1, CT24.1, Cancer/testis antigen CSAGE, CSAG1, CSAGE
<b>Dilution</b>	IHC-P=1:100-500,IHC-F=1:100-500,ICC=1:100-500,IF=1:100-500,ELISA=1:5000-10000
<b>Format</b>	0.01M TBS(pH7.4) with 1% BSA, 0.09% (W/V) sodium azide and 50% Glyce
<b>Storage</b>	Store at -20 °C for one year. Avoid repeated freeze/thaw cycles. When reconstituted in sterile pH 7.4 0.01M PBS or diluent of antibody the antibody is stable for at least two weeks at 2-4 °C.

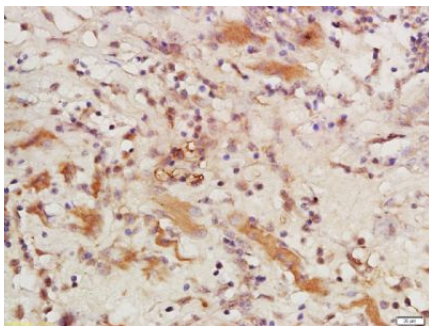
## Protein Information

---

<b>Name</b>	CSAG1 ( <a href="#">HGNC:24294</a> )
<b>Function</b>	May play an important role in maintaining centrosome integrity during mitosis.
<b>Cellular Location</b>	Cytoplasm, cytoskeleton, microtubule organizing center, centrosome. Cytoplasm, cytoskeleton, spindle pole Note=Localizes at spindle poles and/or centrosomes in both mitotic and interphase cells (PubMed:32295846). Spindle pole localization is more pronounced during mitosis (PubMed:32295846). Centrosomal localization culminates at prophase (PubMed:32295846)
<b>Tissue Location</b>	Expressed in chondrosarcoma, melanoma, cartilage and testis, but not in other normal tissues

## Images

---



Tissue/cell: human laryngocarcinoma; 4%  
 Paraformaldehyde-fixed and paraffin-embedded;  
 Antigen retrieval: citrate buffer ( 0.01M, pH 6.0 ), Boiling  
 bathing for 15min; Block endogenous peroxidase by 3%  
 Hydrogen peroxide for 30min; Blocking buffer (normal  
 goat serum,C-0005) at 37°C for 20 min;  
 Incubation: Anti-CSAG1 Polyclonal Antibody,  
 Unconjugated(AP55413) 1:200, overnight at 4°C, followed  
 by conjugation to the secondary antibody(SP-0023) and  
 DAB(C-0010) staining

Please note: All products are 'FOR RESEARCH USE ONLY. NOT FOR USE IN DIAGNOSTIC OR THERAPEUTIC PROCEDURES'.