

CSDE1 Polyclonal Antibody

Purified Rabbit Polyclonal Antibody (Pab)

Catalog # AP55415

Product Information

Application	IHC-P, IHC-F, IF, ICC, E
Primary Accession	O75534
Reactivity	Rat, Pig, Dog, Bovine
Host	Rabbit
Clonality	Polyclonal
Calculated MW	88885
Physical State	Liquid
Immunogen	KLH conjugated synthetic peptide derived from human CSDE1
Epitope Specificity	501-600/798
Isotype	IgG
Purity	affinity purified by Protein A
Buffer	0.01M TBS (pH7.4) with 1% BSA, 0.02% Proclin300 and 50% Glycerol.
SUBCELLULAR LOCATION	Cytoplasm.
SIMILARITY	Contains 9 CSD (cold-shock) domains.
Important Note	This product as supplied is intended for research use only, not for use in human, therapeutic or diagnostic applications.
Background Descriptions	UNR is a 798 amino acid protein that localizes to the cytoplasm and contains nine CDS (cold shock) domains. Existing as a component of the multi-protein autoregulatory ribonucleoprotein complex (ARC), UNR functions as an RNA-binding protein that is required for the initiation of rhinovirus RNA translation and is thought to be involved in translationally coupled mRNA turnover. UNR is expressed as two isoforms, designated long and short, and shares over 98% amino acid identity with its rat counterpart, suggesting a conserved role between species. The gene encoding UNR maps to human chromosome 1, which spans 260 million base pairs, contains over 3,000 genes and comprises nearly 8% of the human genome.

Additional Information

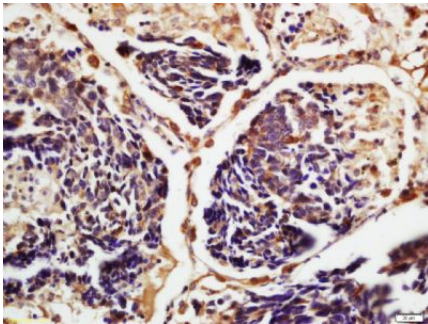
Gene ID	7812
Other Names	Cold shock domain-containing protein E1, N-ras upstream gene protein, Protein UNR, CSDE1 (HGNC:29905)
Dilution	IHC-P=1:100-500,IHC-F=1:100-500,ICC=1:100-500,IF=1:100-500,ELISA=1:5000-10000
Format	0.01M TBS(pH7.4) with 1% BSA, 0.09% (W/V) sodium azide and 50% Glyce
Storage	Store at -20 °C for one year. Avoid repeated freeze/thaw cycles. When reconstituted in sterile pH 7.4 0.01M PBS or diluent of antibody the antibody

is stable for at least two weeks at 2-4 °C.

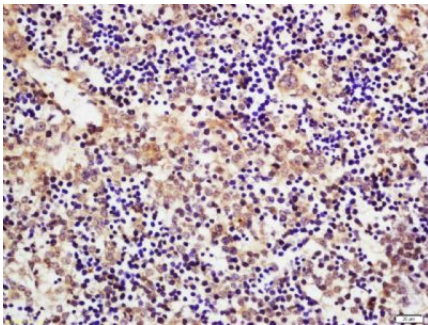
Protein Information

Name	CSDE1 (HGNC:29905)
Function	RNA-binding protein involved in translationally coupled mRNA turnover (PubMed: 11051545 , PubMed: 15314026). Implicated with other RNA- binding proteins in the cytoplasmic deadenylation/translational and decay interplay of the FOS mRNA mediated by the major coding-region determinant of instability (mCRD) domain (PubMed: 11051545 , PubMed: 15314026). Required for efficient formation of stress granules (PubMed: 29395067).
Cellular Location	Cytoplasm. Cytoplasm, Stress granule. Cytoplasm, P-body

Images



Tissue/cell: human lung carcinoma; 4%
Paraformaldehyde-fixed and paraffin-embedded;
Antigen retrieval: citrate buffer (0.01M, pH 6.0), Boiling
bathing for 15min; Block endogenous peroxidase by 3%
Hydrogen peroxide for 30min; Blocking buffer (normal
goat serum,C-0005) at 37°C for 20 min;
Incubation: Anti-CSDE1 Polyclonal Antibody,
Unconjugated(AP55415) 1:200, overnight at 4°C, followed
by conjugation to the secondary antibody(SP-0023) and
DAB(C-0010) staining



Tissue/cell: mouse embryo tissue; 4%
Paraformaldehyde-fixed and paraffin-embedded;
Antigen retrieval: citrate buffer (0.01M, pH 6.0), Boiling
bathing for 15min; Block endogenous peroxidase by 3%
Hydrogen peroxide for 30min; Blocking buffer (normal
goat serum,C-0005) at 37°C for 20 min;
Incubation: Anti-CSDE1 Polyclonal Antibody,
Unconjugated(AP55415) 1:200, overnight at 4°C, followed
by conjugation to the secondary antibody(SP-0023) and
DAB(C-0010) staining

Please note: All products are 'FOR RESEARCH USE ONLY. NOT FOR USE IN DIAGNOSTIC OR THERAPEUTIC PROCEDURES'.