

CWF19L2 Polyclonal Antibody

Purified Rabbit Polyclonal Antibody (Pab)

Catalog # AP55426

Product Information

Application	WB, IHC-P, IHC-F, IF, ICC, E
Primary Accession	Q2TBE0
Reactivity	Rat, Dog
Host	Rabbit
Clonality	Polyclonal
Calculated MW	103787
Physical State	Liquid
Immunogen	KLH conjugated synthetic peptide derived from human CWF19L2
Epitope Specificity	801-894/894
Isotype	IgG
Purity	affinity purified by Protein A
Buffer	0.01M TBS (pH7.4) with 1% BSA, 0.02% Proclin300 and 50% Glycerol.
SIMILARITY	Belongs to the CWF19 family.
Important Note	This product as supplied is intended for research use only, not for use in human, therapeutic or diagnostic applications.

Additional Information

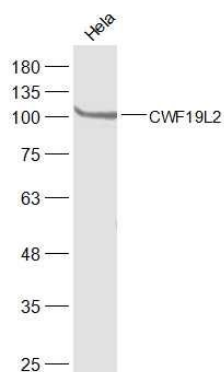
Gene ID	143884
Other Names	CWF19-like protein 2, CWF19L2
Dilution	WB=1:500-2000,IHC-P=1:100-500,IHC-F=1:100-500,ICC=1:100-500,IF=1:100-500,ELISA=1:5000-10000
Format	0.01M TBS(pH7.4) with 1% BSA, 0.09% (W/V) sodium azide and 50% Glyce
Storage	Store at -20 °C for one year. Avoid repeated freeze/thaw cycles. When reconstituted in sterile pH 7.4 0.01M PBS or diluent of antibody the antibody is stable for at least two weeks at 2-4 °C.

Protein Information

Name	CWF19L2
-------------	---------

Images

Sample:



HeLa(Human) Cell Lysate at 40 ug
Primary: Anti-CWF19L2 (AP55426) at 1/300 dilution
Secondary: IRDye800CW Goat Anti-Rabbit IgG at
1/20000 dilution
Predicted band size: 104 kD
Observed band size: 104 kD

Please note: All products are 'FOR RESEARCH USE ONLY. NOT FOR USE IN DIAGNOSTIC OR THERAPEUTIC PROCEDURES'.