

# Cyclophilin E Polyclonal Antibody

Purified Rabbit Polyclonal Antibody (Pab)

Catalog # AP55435

## Product Information

---

<b>Application</b>	IHC-P, IHC-F, IF, ICC, E
<b>Primary Accession</b>	<a href="#">Q9UNP9</a>
<b>Reactivity</b>	Rat, Dog, Bovine
<b>Host</b>	Rabbit
<b>Clonality</b>	Polyclonal
<b>Calculated MW</b>	33431
<b>Physical State</b>	Liquid
<b>Immunogen</b>	KLH conjugated synthetic peptide derived from human Cyclophilin E
<b>Epitope Specificity</b>	201-301/301
<b>Isotype</b>	IgG
<b>Purity</b>	affinity purified by Protein A
<b>Buffer</b>	0.01M TBS (pH7.4) with 1% BSA, 0.02% Proclin300 and 50% Glycerol.
<b>SUBCELLULAR LOCATION</b>	Nucleus.
<b>SIMILARITY</b>	Belongs to the cyclophilin-type PPIase family. PPIase E subfamily. Contains 1 PPIase cyclophilin-type domain. Contains 1 RRM (RNA recognition motif) domain.
<b>Important Note</b>	This product as supplied is intended for research use only, not for use in human, therapeutic or diagnostic applications.
<b>Background Descriptions</b>	The protein encoded by this gene is a member of the peptidyl-prolyl cis-trans isomerase (PPIase) family. PPIases catalyze the cis-trans isomerization of proline imidic peptide bonds in oligopeptides and accelerate the folding of proteins. This protein contains a highly conserved cyclophilin (CYP) domain as well as an RNA-binding domain. It was shown to possess PPIase and protein folding activities, and it also exhibits RNA-binding activity. Alternative splicing results in multiple transcript variants. A related pseudogene, which is also located on chromosome 1, has been identified. [provided by RefSeq, Aug 2010]

## Additional Information

---

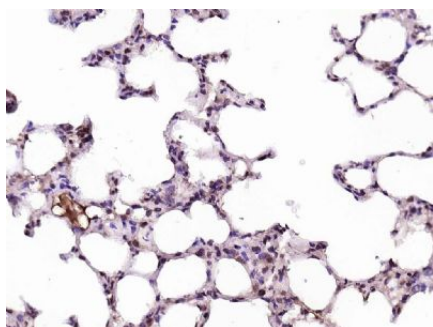
<b>Gene ID</b>	10450
<b>Other Names</b>	Peptidyl-prolyl cis-trans isomerase E, PPIase E, 5.2.1.8, Cyclophilin E, Cyclophilin-33, Rotamase E, PPIE, CYP33 {ECO:0000303   PubMed:8977107}
<b>Target/Specificity</b>	Found in all the examined tissues including heart, brain, placenta, lung, liver, skeletal muscle, kidney and pancreas.
<b>Dilution</b>	IHC-P=1:100-500,IHC-F=1:100-500,ICC=1:100-500,IF=1:100-500,ELISA=1:5000-10000

<b>Format</b>	0.01M TBS(pH7.4) with 1% BSA, 0.09% (W/V) sodium azide and 50% Glyce
<b>Storage</b>	Store at -20 °C for one year. Avoid repeated freeze/thaw cycles. When reconstituted in sterile pH 7.4 0.01M PBS or diluent of antibody the antibody is stable for at least two weeks at 2-4 °C.

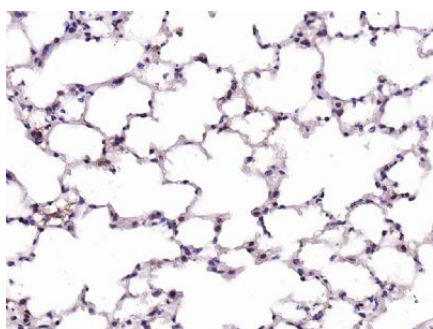
## Protein Information

<b>Name</b>	PPIE
<b>Synonyms</b>	CYP33 {ECO:0000303 PubMed:8977107}
<b>Function</b>	Involved in pre-mRNA splicing as component of the spliceosome (PubMed: <a href="#">11991638</a> , PubMed: <a href="#">28076346</a> ). Combines RNA-binding and PPIase activities (PubMed: <a href="#">18258190</a> , PubMed: <a href="#">20460131</a> , PubMed: <a href="#">20677832</a> , PubMed: <a href="#">8977107</a> ). Binds mRNA and has a preference for single-stranded RNA molecules with poly-A and poly-U stretches, suggesting it binds to the poly(A)-region in the 3'-UTR of mRNA molecules (PubMed: <a href="#">18258190</a> , PubMed: <a href="#">20460131</a> , PubMed: <a href="#">8977107</a> ). Catalyzes the cis-trans isomerization of proline imidic peptide bonds in proteins (PubMed: <a href="#">18258190</a> , PubMed: <a href="#">20541251</a> , PubMed: <a href="#">20677832</a> , PubMed: <a href="#">8977107</a> ). Inhibits KMT2A activity; this requires proline isomerase activity (PubMed: <a href="#">20460131</a> , PubMed: <a href="#">20541251</a> , PubMed: <a href="#">20677832</a> ).
<b>Cellular Location</b>	Nucleus
<b>Tissue Location</b>	Found in all the examined tissues including heart, brain, placenta, lung, liver, skeletal muscle, kidney and pancreas

## Images



Paraformaldehyde-fixed, paraffin embedded (rat lung); Antigen retrieval by boiling in sodium citrate buffer (pH6.0) for 15min; Block endogenous peroxidase by 3% hydrogen peroxide for 20 minutes; Blocking buffer (normal goat serum) at 37°C for 30min; Antibody incubation with (Cyclophilin E) Polyclonal Antibody, Unconjugated (AP55435) at 1:200 overnight at 4°C, followed by operating according to SP Kit(Rabbit) (sp-0023) instructions and DAB staining.



Paraformaldehyde-fixed, paraffin embedded (mouse lung); Antigen retrieval by boiling in sodium citrate buffer (pH6.0) for 15min; Block endogenous peroxidase by 3% hydrogen peroxide for 20 minutes; Blocking buffer (normal goat serum) at 37°C for 30min; Antibody incubation with (Cyclophilin E) Polyclonal Antibody, Unconjugated (AP55435) at 1:200 overnight at 4°C, followed by operating according to SP Kit(Rabbit) (sp-0023) instructions and DAB staining.