

DHI1L Rabbit pAb

DHI1L Rabbit pAb
Catalog # AP55513

Product Information

Application	IHC-P, IHC-F, IF
Primary Accession	Q7Z5J1
Reactivity	Human
Host	Rabbit
Clonality	Polyclonal
Calculated MW	34288
Physical State	Liquid
Immunogen	KLH conjugated synthetic peptide derived from human DHI1L
Epitope Specificity	241-315/315
Isotype	IgG
Purity	affinity purified by Protein A
Buffer	0.01M TBS (pH7.4) with 1% BSA, 0.02% Proclin300 and 50% Glycerol.
SUBCELLULAR LOCATION	Secreted.
SIMILARITY	Belongs to the short-chain dehydrogenases/reductases (SDR) family.
Important Note	This product as supplied is intended for research use only, not for use in human, therapeutic or diagnostic applications.
Background Descriptions	This gene is a member of the hydroxysteroid dehydrogenase family. The encoded protein is similar to an enzyme that catalyzes the interconversion of inactive to active glucocorticoids (e.g. cortisone). Alternatively spliced transcript variants encoding multiple isoforms have been observed for this gene. [provided by RefSeq, Jun 2012]

Additional Information

Gene ID	374875
Other Names	Hydroxysteroid 11-beta-dehydrogenase 1-like protein, 1.1.1.-, 11-beta-hydroxysteroid dehydrogenase type 3, 11-DH3, 11-beta-HSD3, Short chain dehydrogenase/reductase family 26C member 2, Short-chain dehydrogenase/reductase 10B, HSD11B1L
Dilution	IHC-P=1:100-500,IHC-F=1:100-500,IF=1:100-500
Storage	Store at -20 °C for one year. Avoid repeated freeze/thaw cycles. When reconstituted in sterile pH 7.4 0.01M PBS or diluent of antibody the antibody is stable for at least two weeks at 2-4 °C.

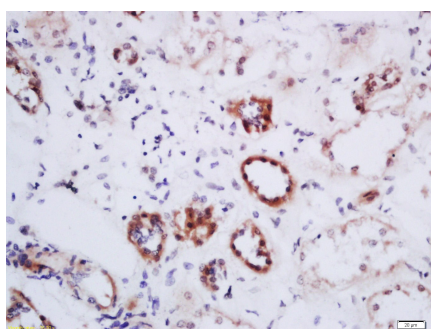
Protein Information

Name	HSD11B1L
Function	Unidirectional NADP(+)-dependent cortisol dehydrogenase (in vitro).
Cellular Location	Secreted.
Tissue Location	Highly expressed in the brain.

Background

This gene is a member of the hydroxysteroid dehydrogenase family. The encoded protein is similar to an enzyme that catalyzes the interconversion of inactive to active glucocorticoids (e.g. cortisone). Alternatively spliced transcript variants encoding multiple isoforms have been observed for this gene. [provided by RefSeq, Jun 2012]

Images



Tissue/cell: human kidney tissue; 4%
 Paraformaldehyde-fixed and paraffin-embedded;
 Antigen retrieval: citrate buffer (0.01M, pH 6.0), Boiling
 bathing for 15min; Block endogenous peroxidase by 3%
 Hydrogen peroxide for 30min; Blocking buffer (normal
 goat serum,C-0005) at 37°C for 20 min;
 Incubation: Anti-DHI1L Polyclonal Antibody,
 Unconjugated(AP55513) 1:200, overnight at 4°C, followed
 by conjugation to the secondary antibody(SP-0023) and
 DAB(C-0010) staining

Please note: All products are 'FOR RESEARCH USE ONLY. NOT FOR USE IN DIAGNOSTIC OR THERAPEUTIC PROCEDURES'.