

# DNA Polymerase epsilon Polyclonal Antibody

Purified Rabbit Polyclonal Antibody (Pab)

Catalog # AP55535

## Product Information

<b>Application</b>	WB, IHC-P, IHC-F, IF, ICC, E
<b>Primary Accession</b>	<a href="#">Q9NRF9</a>
<b>Reactivity</b>	Rat, Pig, Dog, Bovine
<b>Host</b>	Rabbit
<b>Clonality</b>	Polyclonal
<b>Calculated MW</b>	16860
<b>Physical State</b>	Liquid
<b>Immunogen</b>	KLH conjugated synthetic peptide derived from human DNA Polymerase epsilon
<b>Epitope Specificity</b>	51-147/147
<b>Isotype</b>	IgG
<b>Purity</b>	affinity purified by Protein A
<b>Buffer</b>	0.01M TBS (pH7.4) with 1% BSA, 0.02% Proclin300 and 50% Glycerol.
<b>SUBCELLULAR LOCATION</b>	Nucleus.
<b>Important Note</b>	This product as supplied is intended for research use only, not for use in human, therapeutic or diagnostic applications.
<b>Background Descriptions</b>	OLE3 is a histone-fold protein that interacts with other histone-fold proteins to bind DNA in a sequence-independent manner. These histone-fold protein dimers combine within larger enzymatic complexes for DNA transcription, replication, and packaging.[supplied by OMIM, Apr 2004]

## Additional Information

<b>Gene ID</b>	54107
<b>Other Names</b>	DNA polymerase epsilon subunit 3, Arsenic-transactivated protein, AsTP, Chromatin accessibility complex 17 kDa protein, CHRAC-17, HuCHRAC17, DNA polymerase II subunit 3, DNA polymerase epsilon subunit p17, POLE3, CHRAC17
<b>Target/Specificity</b>	Expressed in all tissues tested, including, heart, brain, placenta, lung, liver, skeletal muscle, kidney and pancreas.
<b>Dilution</b>	WB=1:500-2000,IHC-P=1:100-500,IHC-F=1:100-500,ICC=1:100-500,IF=1:100-500,ELISA=1:5000-10000
<b>Format</b>	0.01M TBS(pH7.4) with 1% BSA, 0.09% (W/V) sodium azide and 50% Glyce
<b>Storage</b>	Store at -20 °C for one year. Avoid repeated freeze/thaw cycles. When reconstituted in sterile pH 7.4 0.01M PBS or diluent of antibody the antibody is stable for at least two weeks at 2-4 °C.

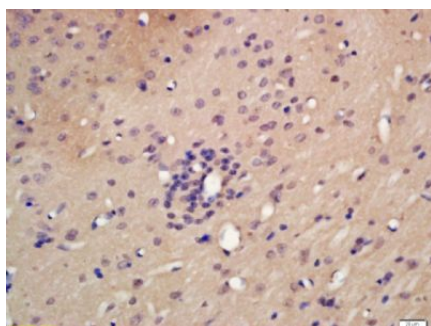
## Protein Information

---

<b>Name</b>	POLE3
<b>Synonyms</b>	CHRA17
<b>Function</b>	Accessory component of the DNA polymerase epsilon complex (PubMed: <a href="#">10801849</a> ). Participates in DNA repair and in chromosomal DNA replication (By similarity). Forms a complex with CHRA1 and binds naked DNA, which is then incorporated into chromatin, aided by the nucleosome-remodeling activity of ISWI/SNF2H and ACF1 (PubMed: <a href="#">10801849</a> ). Does not enhance nucleosome sliding activity of the ACF-5 ISWI chromatin remodeling complex (PubMed: <a href="#">14759371</a> ).
<b>Cellular Location</b>	Nucleus.
<b>Tissue Location</b>	Expressed in heart, brain, placenta, lung, liver, skeletal muscle, kidney and pancreas.

## Images

---



Tissue/cell: rat brain tissue; 4% Paraformaldehyde-fixed and paraffin-embedded;  
Antigen retrieval: citrate buffer ( 0.01M, pH 6.0 ), Boiling bathing for 15min; Block endogenous peroxidase by 3% Hydrogen peroxide for 30min; Blocking buffer (normal goat serum,C-0005) at 37°C for 20 min;  
Incubation: Anti-DNA Polymerase epsilon Polyclonal Antibody, Unconjugated(AP55535) 1:200, overnight at 4°C, followed by conjugation to the secondary antibody(SP-0023) and DAB(C-0010) staining

Please note: All products are 'FOR RESEARCH USE ONLY. NOT FOR USE IN DIAGNOSTIC OR THERAPEUTIC PROCEDURES'.