

# EDEM3 Rabbit pAb

EDEM3 Rabbit pAb  
Catalog # AP55603

## Product Information

---

<b>Application</b>	IHC-P, IHC-F, IF
<b>Primary Accession</b>	<a href="#">Q9BZQ6</a>
<b>Reactivity</b>	Rat
<b>Predicted</b>	Human, Mouse, Chicken, Pig, Horse, Sheep
<b>Host</b>	Rabbit
<b>Clonality</b>	Polyclonal
<b>Calculated MW</b>	104664
<b>Physical State</b>	Liquid
<b>Immunogen</b>	KLH conjugated synthetic peptide derived from human EDEM3
<b>Epitope Specificity</b>	401-500/932
<b>Isotype</b>	IgG
<b>Purity</b>	affinity purified by Protein A
<b>Buffer</b>	0.01M TBS (pH7.4) with 1% BSA, 0.02% Proclin300 and 50% Glycerol.
<b>SUBCELLULAR LOCATION</b>	Endoplasmic reticulum lumen.
<b>SIMILARITY</b>	Belongs to the glycosyl hydrolase 47 family. Contains 1 PA (protease associated) domain.
<b>Important Note</b>	This product as supplied is intended for research use only, not for use in human, therapeutic or diagnostic applications.
<b>Background Descriptions</b>	Quality control in the endoplasmic reticulum (ER) ensures that only properly folded proteins are retained in the cell through recognition and degradation of misfolded or unassembled proteins. EDEM3 belongs to a group of proteins that accelerate degradation of misfolded glycoproteins in the ER (Hirao et al., 2006 [PubMed 16431915]).[supplied by OMIM, Mar 2008]

## Additional Information

---

<b>Gene ID</b>	80267
<b>Other Names</b>	ER degradation-enhancing alpha-mannosidase-like protein 3, 3.2.1.113, Alpha-1, 2-mannosidase EDEM3, EDEM3, C1orf22
<b>Dilution</b>	IHC-P=1:100-500,IHC-F=1:100-500,IF=1:100-500
<b>Storage</b>	Store at -20 °C for one year. Avoid repeated freeze/thaw cycles. When reconstituted in sterile pH 7.4 0.01M PBS or diluent of antibody the antibody is stable for at least two weeks at 2-4 °C.

## Protein Information

---

<b>Name</b>	EDEM3
<b>Synonyms</b>	C1orf22
<b>Function</b>	Involved in endoplasmic reticulum-associated degradation (ERAD). Accelerates the glycoprotein ERAD by proteasomes, by catalyzing mannose trimming from Man8GlcNAc2 to Man7GlcNAc2 in the N-glycans (PubMed: <a href="#">25092655</a> ). May also participate in mannose trimming from all glycoproteins and not just misfolded ones targeted to ERAD (PubMed: <a href="#">34143952</a> ). May have alpha 1,2-mannosidase activity (By similarity).
<b>Cellular Location</b>	Endoplasmic reticulum lumen {ECO:0000255   PROSITE- ProRule:PRU10138}

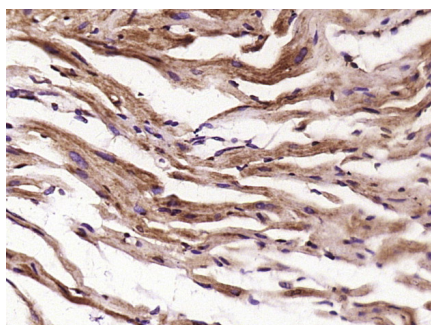
## Background

---

Quality control in the endoplasmic reticulum (ER) ensures that only properly folded proteins are retained in the cell through recognition and degradation of misfolded or unassembled proteins. EDEM3 belongs to a group of proteins that accelerate degradation of misfolded glycoproteins in the ER (Hirao et al., 2006 [PubMed 16431915]).[supplied by OMIM, Mar 2008]

## Images

---



Paraformaldehyde-fixed, paraffin embedded (rat heart tissue); Antigen retrieval by boiling in sodium citrate buffer (pH6.0) for 15min; Block endogenous peroxidase by 3% hydrogen peroxide for 20 minutes; Blocking buffer (normal goat serum) at 37°C for 30min; Antibody incubation with (EDEM3) Polyclonal Antibody, Unconjugated (AP55603) at 1:400 overnight at 4°C, followed by operating according to SP Kit(Rabbit) (sp-0023) instructions and DAB staining.

Please note: All products are 'FOR RESEARCH USE ONLY. NOT FOR USE IN DIAGNOSTIC OR THERAPEUTIC PROCEDURES'.