

EFHD2 Polyclonal Antibody

Purified Rabbit Polyclonal Antibody (Pab)

Catalog # AP55607

Product Information

Application	WB, IHC-P, IHC-F, IF, ICC, E
Primary Accession	Q96C19
Reactivity	Rat, Pig, Bovine
Host	Rabbit
Clonality	Polyclonal
Calculated MW	26697
Physical State	Liquid
Immunogen	KLH conjugated synthetic peptide derived from human EFHD2
Epitope Specificity	51-150/240
Isotype	IgG
Purity	affinity purified by Protein A
Buffer	0.01M TBS (pH7.4) with 1% BSA, 0.02% Proclin300 and 50% Glycerol.
SUBCELLULAR LOCATION	Membrane raft. In immature B-cell line WEHI231.
SIMILARITY	Contains 2 EF-hand domains.
Important Note	This product as supplied is intended for research use only, not for use in human, therapeutic or diagnostic applications.
Background Descriptions	EFHD2 is a 240 amino acid protein that regulates spontaneous apoptosis through the regulation of Bcl-xS abundance. Localized to membrane raft, Swiprosin-1 is expressed in lymphocytes and contains two EF-hand domains. The gene encoding Swiprosin-1 maps to human chromosome 1, which spans 260 million base pairs, contains over 3,000 genes and comprises nearly 8% of the human genome. Chromosome 1 houses a large number of disease-associated genes, including those that are involved in familial adenomatous polyposis, Stickler syndrome, Parkinson's disease, Gaucher disease, schizophrenia and Usher syndrome. Aberrations in chromosome 1 are found in a variety of cancers, including head and neck cancer, malignant melanoma and multiple myeloma.

Additional Information

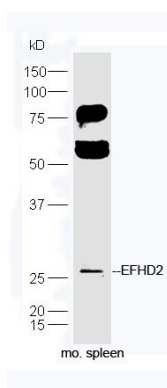
Gene ID	79180
Other Names	EF-hand domain-containing protein D2, Swiprosin-1, EFHD2, SWS1
Target/Specificity	Found in lymphocytes; preferentially expressed in CD8+ cells.
Dilution	WB=1:500-2000,IHC-P=1:100-500,IHC-F=1:100-500,ICC=1:100-500,IF=1:100-500,ELISA=1:5000-10000
Format	0.01M TBS(pH7.4) with 1% BSA, 0.09% (W/V) sodium azide and 50% Glyce

Storage Store at -20 °C for one year. Avoid repeated freeze/thaw cycles. When reconstituted in sterile pH 7.4 0.01M PBS or diluent of antibody the antibody is stable for at least two weeks at 2-4 °C.

Protein Information

Name	EFHD2
Synonyms	SWS1
Function	May regulate B-cell receptor (BCR)-induced immature and primary B-cell apoptosis. Plays a role as negative regulator of the canonical NF-kappa-B-activating branch. Controls spontaneous apoptosis through the regulation of BCL2L1 abundance.
Cellular Location	Membrane raft. Note=In a mouse immature B-cell line WEHI-231.
Tissue Location	Found in lymphocytes; preferentially expressed in CD8+ cells.

Images



Protein:spleen(mouse) lysate at 40ug;
Primary: rabbit Anti-EFHD2 (AP55607) at 1:300;
Secondary: HRP conjugated Goat-Anti-rabbit
IgG(bs-0295G-HRP) at 1: 5000;
Predicted band size: 27 kD
Observed band size: 27 kD

Please note: All products are 'FOR RESEARCH USE ONLY. NOT FOR USE IN DIAGNOSTIC OR THERAPEUTIC PROCEDURES'.