

ELMOD2 Polyclonal Antibody

Purified Rabbit Polyclonal Antibody (Pab)

Catalog # AP55625

Product Information

Application	WB, IHC-P, IHC-F, IF, ICC, E
Primary Accession	Q8IZ81
Reactivity	Rat, Dog, Bovine
Host	Rabbit
Clonality	Polyclonal
Calculated MW	34961
Physical State	Liquid
Immunogen	KLH conjugated synthetic peptide derived from human ELMOD2
Epitope Specificity	151-250/293
Isotype	IgG
Purity	affinity purified by Protein A
Buffer	0.01M TBS (pH7.4) with 1% BSA, 0.02% Proclin300 and 50% Glycerol.
SIMILARITY	Contains 1 ELMO domain.
Important Note	This product as supplied is intended for research use only, not for use in human, therapeutic or diagnostic applications.
Background Descriptions	ELMOD2 is a 293 amino acid protein that is one of six human proteins that contain an ELMO domain. ELMOD2 is thought to interact with DOCK1 through a SH3-binding site, which enhances the guanine nucleotide exchange factor (GEF) activity of DOCK1. Therefore, ELMOD2 may also be part of a complex with DOCK1 and Rac1 that is required to activate Rac Rho small GTPases. Evidence of decreased ELMOD2 expression in lung of individuals with familial idiopathic pulmonary fibrosis (IPF) suggests that defects in the gene encoding ELMOD2 may be linked to susceptibility for familial IPF.

Additional Information

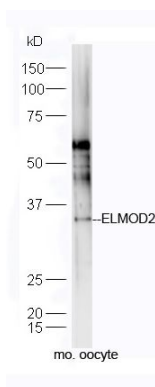
Gene ID	255520
Other Names	ELMO domain-containing protein 2, ELMOD2
Target/Specificity	Alveolar cells (morphologically type II cells) and alveolar macrophages (at protein level). Expressed in brain, colon, heart, kidney, liver, lung, muscle, placenta, small intestine, spleen, stomach and testis. In lung it is expressed in alveolar macrophages and alveolar walls.
Dilution	WB=1:500-2000,IHC-P=1:100-500,IHC-F=1:100-500,ICC=1:100-500,IF=1:100-500,ELISA=1:5000-10000
Format	0.01M TBS(pH7.4) with 1% BSA, 0.09% (W/V) sodium azide and 50% Glyce
Storage	Store at -20 °C for one year. Avoid repeated freeze/thaw cycles. When

reconstituted in sterile pH 7.4 0.01M PBS or diluent of antibody the antibody is stable for at least two weeks at 2-4 °C.

Protein Information

Name	ELMOD2
Function	Acts as a GTPase-activating protein (GAP) toward guanine nucleotide exchange factors like ARL2, ARL3, ARF1 and ARF6, but not for GTPases outside the Arf family. Regulates IFN-related antiviral responses.
Tissue Location	Alveolar cells (morphologically type II cells) and alveolar macrophages (at protein level). Expressed in brain, colon, heart, kidney, liver, lung, muscle, placenta, small intestine, spleen, stomach and testis. In lung it is expressed in alveolar macrophages and alveolar walls.

Images



Sample:
oocyte (Mouse) CellLysate at 40 ug
Primary: Anti-ELMOD2 (AP55625) at 1/300 dilution
Secondary: IRDye800CW Goat Anti-Rabbit IgG at 1/20000 dilution
Predicted band size: 35 kD
Observed band size: 35 kD

Please note: All products are 'FOR RESEARCH USE ONLY. NOT FOR USE IN DIAGNOSTIC OR THERAPEUTIC PROCEDURES'.