

# ENO4 Polyclonal Antibody

Purified Rabbit Polyclonal Antibody (Pab)

Catalog # AP55638

## Product Information

<b>Application</b>	IHC-P, IHC-F, IF, ICC, E
<b>Primary Accession</b>	<a href="#">A6NNW6</a>
<b>Reactivity</b>	Rat, Bovine
<b>Host</b>	Rabbit
<b>Clonality</b>	Polyclonal
<b>Calculated MW</b>	68465
<b>Physical State</b>	Liquid
<b>Immunogen</b>	KLH conjugated synthetic peptide derived from human ENO4
<b>Epitope Specificity</b>	401-500/628
<b>Isotype</b>	IgG
<b>Purity</b>	affinity purified by Protein A
<b>Buffer</b>	0.01M TBS (pH7.4) with 1% BSA, 0.02% Proclin300 and 50% Glycerol.
<b>SIMILARITY</b>	Belongs to the enolase family.
<b>Important Note</b>	This product as supplied is intended for research use only, not for use in human, therapeutic or diagnostic applications.
<b>Background Descriptions</b>	Enolases have been characterized as highly conserved cytoplasmic glycolytic enzymes that may be involved in differentiation. Three isoenzymes have been identified, alpha enolase, beta enolase and gamma enolase. alpha enolase expression has been detected on most tissues, whereas betaenolase is expressed predominantly in muscle tissue and gamma enolase is detected only in nervous tissue. These isoforms exist as both homodimers and heterodimers, and they play a role in converting phosphoglyceric acid to phosphoenolpyruvic acid in the glycolytic pathway. ENO4 (Enolase-like protein ENO4), also known as C10orf134, is a 628 amino acid protein that belongs to the Enolase family. ENO4 is expressed as two isoforms produced by alternative splicing and is encoded by a gene mapping to human chromosome 10q25.3 and murine chromosome 19 D3.

## Additional Information

<b>Gene ID</b>	387712
<b>Other Names</b>	Enolase 4, 4.2.1.11, 2-phospho-D-glycerate hydro-lyase, ENO4 ( <a href="#">HGNC:31670</a> ), C10orf134
<b>Dilution</b>	IHC-P=1:100-500,IHC-F=1:100-500,ICC=1:100-500,IF=1:100-500,ELISA=1:5000-10000
<b>Format</b>	0.01M TBS(pH7.4) with 1% BSA, 0.09% (W/V) sodium azide and 50% Glyce
<b>Storage</b>	Store at -20 °C for one year. Avoid repeated freeze/thaw cycles. When

reconstituted in sterile pH 7.4 0.01M PBS or diluent of antibody the antibody is stable for at least two weeks at 2-4 °C.

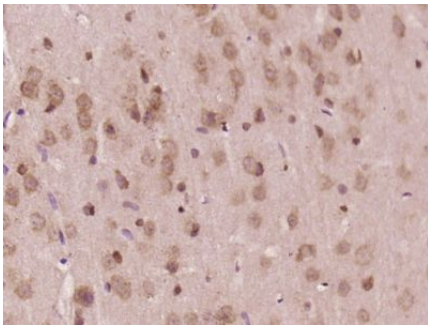
## Protein Information

---

<b>Name</b>	ENO4 ( <a href="#">HGNC:31670</a> )
<b>Synonyms</b>	C10orf134
<b>Function</b>	May be required for sperm motility and function.

## Images

---



Paraformaldehyde-fixed, paraffin embedded (Rat brain); Antigen retrieval by boiling in sodium citrate buffer (pH6.0) for 15min; Block endogenous peroxidase by 3% hydrogen peroxide for 20 minutes; Blocking buffer (normal goat serum) at 37°C for 30min; Antibody incubation with (ENO4) Polyclonal Antibody, Unconjugated (AP55638) at 1:400 overnight at 4°C, followed by operating according to SP Kit(Rabbit) (sp-0023) instructions and DAB staining.

Please note: All products are 'FOR RESEARCH USE ONLY. NOT FOR USE IN DIAGNOSTIC OR THERAPEUTIC PROCEDURES'.