

ESCO2 Polyclonal Antibody

Purified Rabbit Polyclonal Antibody (Pab)

Catalog # AP55652

Product Information

Application	WB, IHC-P, IHC-F, IF, ICC, E
Primary Accession	Q56NI9
Reactivity	Human, Mouse
Host	Rabbit
Clonality	Polyclonal
Calculated MW	68307
Physical State	Liquid
Immunogen	KLH conjugated synthetic peptide derived from human ESCO2
Epitope Specificity	101-200/601
Isotype	IgG
Purity	affinity purified by Protein A
Buffer	0.01M TBS (pH7.4) with 1% BSA, 0.02% Proclin300 and 50% Glycerol.
SUBCELLULAR LOCATION	Nuclear
Important Note	This product as supplied is intended for research use only, not for use in human, therapeutic or diagnostic applications.
Background Descriptions	This gene encodes a protein that may have acetyltransferase activity and may be required for the establishment of sister chromatid cohesion during the S phase of mitosis. Mutations in this gene have been associated with Roberts syndrome. [provided by RefSeq, Jul 2008]

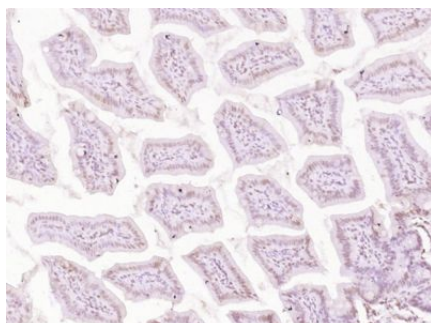
Additional Information

Gene ID	157570
Other Names	N-acetyltransferase ESCO2, 2.3.1.-, Establishment factor-like protein 2, EFO2, EFO2p, hEFO2, Establishment of cohesion 1 homolog 2, ECO1 homolog 2, ESCO2
Dilution	WB=1:500-2000,IHC-P=1:100-500,IHC-F=1:100-500,ICC=1:100-500,IF=1:100-500,ELISA=1:5000-10000
Format	0.01M TBS(pH7.4) with 1% BSA, 0.09% (W/V) sodium azide and 50% Glyce
Storage	Store at -20 °C for one year. Avoid repeated freeze/thaw cycles. When reconstituted in sterile pH 7.4 0.01M PBS or diluent of antibody the antibody is stable for at least two weeks at 2-4 °C.

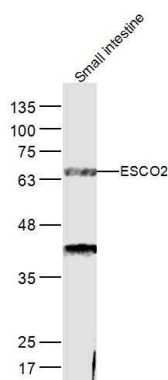
Protein Information

Name	ESCO2 (HGNC:27230)
Function	Acetyltransferase required for the establishment of sister chromatid cohesion (PubMed: 15821733 , PubMed: 15958495). Couples the processes of cohesion and DNA replication to ensure that only sister chromatids become paired together. In contrast to the structural cohesins, the deposition and establishment factors are required only during the S phase. Acetylates the cohesin component SMC3 (PubMed: 21111234).
Cellular Location	Nucleus. Chromosome. Note=Nuclear in interphase cells, excluded from chromosomes during metaphase but reassociates with chromosomes in telophase.
Tissue Location	Widely expressed in fetal tissues. In adult, it is expressed in thymus, placenta and small intestine

Images



Paraformaldehyde-fixed, paraffin embedded (Mouse intestine); Antigen retrieval by boiling in sodium citrate buffer (pH6.0) for 15min; Block endogenous peroxidase by 3% hydrogen peroxide for 20 minutes; Blocking buffer (normal goat serum) at 37°C for 30min; Antibody incubation with (ESCO2) Polyclonal Antibody, Unconjugated (AP55652) at 1:400 overnight at 4°C, followed by operating according to SP Kit(Rabbit) (sp-0023) instructions and DAB staining.



Sample:
 Small intestine (Mouse) Lysate at 40 ug
 Primary: Anti-ESCO2 (AP55652) at 1/300 dilution
 Secondary: IRDye800CW Goat Anti-Rabbit IgG at 1/20000 dilution
 Predicted band size: 68 kD
 Observed band size: 68 kD

Please note: All products are 'FOR RESEARCH USE ONLY. NOT FOR USE IN DIAGNOSTIC OR THERAPEUTIC PROCEDURES'.