

FAM116A Polyclonal Antibody

Purified Rabbit Polyclonal Antibody (Pab)

Catalog # AP55678

Product Information

Application	WB, IHC-P, IHC-F, IF, ICC, E
Primary Accession	Q8IWF6
Reactivity	Rat, Pig, Bovine
Host	Rabbit
Clonality	Polyclonal
Calculated MW	69575
Physical State	Liquid
Immunogen	KLH conjugated synthetic peptide derived from human FAM116A
Epitope Specificity	101-200/608
Isotype	IgG
Purity	affinity purified by Protein A
Buffer	0.01M TBS (pH7.4) with 1% BSA, 0.02% Proclin300 and 50% Glycerol.
SIMILARITY	Belongs to the FAM116 family.
Important Note	This product as supplied is intended for research use only, not for use in human, therapeutic or diagnostic applications.

Additional Information

Gene ID	201627
Other Names	Protein DENND6A, DENN domain-containing protein 6A, DENND6A, FAM116A
Dilution	WB=1:500-2000,IHC-P=1:100-500,IHC-F=1:100-500,ICC=1:100-500,IF=1:100-500,ELISA=1:5000-10000
Format	0.01M TBS(pH7.4) with 1% BSA, 0.09% (W/V) sodium azide and 50% Glyce
Storage	Store at -20 °C for one year. Avoid repeated freeze/thaw cycles. When reconstituted in sterile pH 7.4 0.01M PBS or diluent of antibody the antibody is stable for at least two weeks at 2-4 °C.

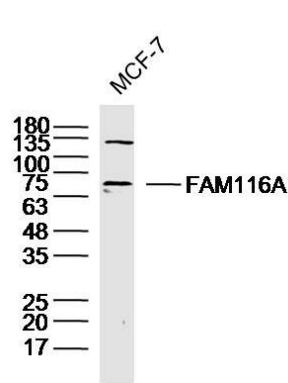
Protein Information

Name	DENND6A
Synonyms	FAM116A
Function	Guanine nucleotide exchange factor (GEF) for RAB14. Component of an endocytic recycling pathway that is required for the control of ADAM10 transport, shedding of N-cadherin/CDH2 by ADAM9 or ADAM10 and

regulation of cell-cell junctions. Required for RAB14 recruitment to recycling endosomes.

Cellular Location Recycling endosome. Cytoplasm

Images



Sample:MCF-7 (Human)Cell Lysate at 40 ug
Primary: Anti-FAM116A(AP55678)at 1/300 dilution
Secondary: IRDye800CW Goat Anti-RabbitIgG at 1/20000 dilution
Predicted band size: 70kD
Observed band size: 70kD

Please note: All products are 'FOR RESEARCH USE ONLY. NOT FOR USE IN DIAGNOSTIC OR THERAPEUTIC PROCEDURES'.