

DDX19A Polyclonal Antibody

Purified Rabbit Polyclonal Antibody (Pab)

Catalog # AP55687

Product Information

Application	WB, IHC-P, IHC-F, IF, ICC, E
Primary Accession	Q9NUU7
Reactivity	Rat
Host	Rabbit
Clonality	Polyclonal
Calculated MW	53975
Physical State	Liquid
Immunogen	KLH conjugated synthetic peptide derived from human DDX19A
Epitope Specificity	201-300/478
Isotype	IgG
Purity	affinity purified by Protein A
Buffer	0.01M TBS (pH7.4) with 1% BSA, 0.02% Proclin300 and 50% Glycerol.
SUBCELLULAR LOCATION	Cytoplasm. Nucleus > nuclear pore complex. Nucleus membrane. Nuclear pore complex cytoplasmic fibrils.
SIMILARITY	Belongs to the DEAD box helicase family. DDX19/DBP5 subfamily. Contains 1 helicase ATP-binding domain. Contains 1 helicase C-terminal domain.
Important Note	This product as supplied is intended for research use only, not for use in human, therapeutic or diagnostic applications.
Background Descriptions	ATP-dependent RNA helicase involved in mRNA export from the nucleus. Subcellular Location : Cytoplasm. Nucleus > nuclear pore complex. Nucleus membrane. Nuclear pore complex cytoplasmic fibrils.

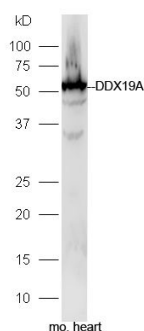
Additional Information

Gene ID	55308
Other Names	ATP-dependent RNA helicase DDX19A, 3.6.4.13, DDX19-like protein, DEAD box protein 19A, DDX19A, DDX19L
Dilution	WB=1:500-2000,IHC-P=1:100-500,IHC-F=1:100-500,ICC=1:100-500,IF=1:100-500,ELISA=1:5000-10000
Format	0.01M TBS(pH7.4) with 1% BSA, 0.09% (W/V) sodium azide and 50% Glyce
Storage	Store at -20 °C for one year. Avoid repeated freeze/thaw cycles. When reconstituted in sterile pH 7.4 0.01M PBS or diluent of antibody the antibody is stable for at least two weeks at 2-4 °C.

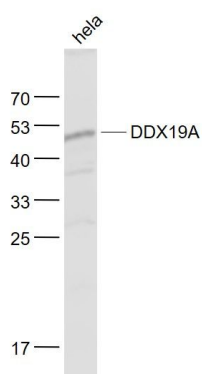
Protein Information

Name	DDX19A
Synonyms	DDX19L
Function	ATP-dependent RNA helicase involved in mRNA export from the nucleus. Rather than unwinding RNA duplexes, DDX19 functions as a remodeler of ribonucleoprotein particles, whereby proteins bound to nuclear mRNA are dissociated and replaced by cytoplasmic mRNA binding proteins.
Cellular Location	Cytoplasm {ECO:0000250 UniProtKB:Q9UMR2}. Nucleus, nucleoplasm {ECO:0000250 UniProtKB:Q9UMR2}. Note=Associates with the nuclear pore complex cytoplasmic fibrils {ECO:0000250 UniProtKB:Q9UMR2}

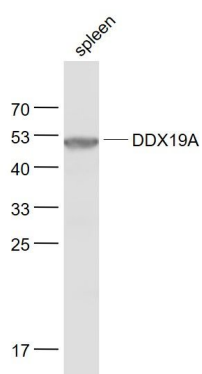
Images



Protein: heart(mouse) lysate at 30ug;
 Primary: rabbit Anti-DDX19A (AP55687) at 1:300;
 Secondary: HRP conjugated Goat-Anti-rabbit IgG(bs-0295G-HRP) at 1: 5000;
 Predicted band size: 54 kD
 Observed band size: 54 kD



Sample:
 HeLa(Human) Cell Lysate at 30 ug
 Primary: Anti- DDX19A (AP55687) at 1/1000 dilution
 Secondary: IRDye800CW Goat Anti-Rabbit IgG at 1/20000 dilution
 Predicted band size: 54 kD
 Observed band size: 52 kD



Sample:
 Spleen (Mouse) Lysate at 40 ug
 Primary: Anti- DDX19A (AP55687) at 1/1000 dilution
 Secondary: IRDye800CW Goat Anti-Rabbit IgG at 1/20000 dilution
 Predicted band size: 54 kD
 Observed band size: 52 kD

Please note: All products are 'FOR RESEARCH USE ONLY. NOT FOR USE IN DIAGNOSTIC OR THERAPEUTIC PROCEDURES'.