

C22orf29 Polyclonal Antibody

Purified Rabbit Polyclonal Antibody (Pab)

Catalog # AP55821

Product Information

Application	WB, IHC-P, IHC-F, IF, ICC, E
Primary Accession	Q7L3V2
Reactivity	Human
Host	Rabbit
Clonality	Polyclonal
Calculated MW	39299
Physical State	Liquid
Immunogen	KLH conjugated synthetic peptide derived from human C22orf29
Epitope Specificity	21-100/364
Isotype	IgG
Purity	affinity purified by Protein A
Buffer	0.01M TBS (pH7.4) with 1% BSA, 0.02% Proclin300 and 50% Glycerol.
SUBCELLULAR LOCATION	Mitochondrion.
SUBUNIT	Interacts (via BH3 domain) with VDAC1. Interacts with pro-survival Bcl-2 family members, BCL2, BCL2L1 isoform Bcl-X(L), MCL1, BCL2A1 and BCL2L2. Interacts with BAX and BAK.
Important Note	This product as supplied is intended for research use only, not for use in human, therapeutic or diagnostic applications.
Background Descriptions	<p>Chromosome 22 contains over 500 genes and about 49 million bases. Being the second smallest human chromosome, 22 contains a surprising variety of interesting genes. Phelan-McDermid syndrome, neurofibromatosis type 2 and autism are associated with chromosome 22. A schizophrenia susceptibility locus has been identified on chromosome 22 and studies show that 22q11 deletion symptoms include a high incidence of schizophrenia.</p> <p>Translocations between chromosomes 9 and 22 may lead to the formation of the Philadelphia chromosome and the subsequent production of the novel fusion protein, Bcr-Abl, a potent cell proliferation activator found in several types of leukemia. The C22orf29 gene product has been provisionally designated C22orf29 pending further characterization</p>

Additional Information

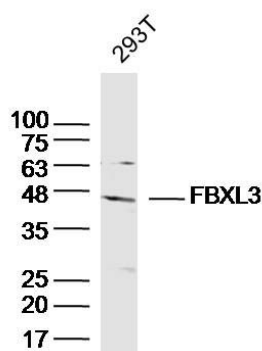
Gene ID	79680
Other Names	Protein Bop, BH3-only protein, Retrotransposon Gag-like protein 10 {ECO:0000312 HGNC:HGNC:26112}, RTL10 (HGNC:26112), BOP, C22orf29
Target/Specificity	Ubiquitously expressed.
Dilution	WB=1:500-2000,IHC-P=1:100-500,IHC-F=1:100-500,ICC=1:100-500,IF=1:100-500,ELISA=1:5000-10000

Format	0.01M TBS(pH7.4) with 1% BSA, 0.09% (W/V) sodium azide and 50% Glyce
Storage	Store at -20 °C for one year. Avoid repeated freeze/thaw cycles. When reconstituted in sterile pH 7.4 0.01M PBS or diluent of antibody the antibody is stable for at least two weeks at 2-4 °C.

Protein Information

Name	RTL10 (HGNC:26112)
Synonyms	BOP, C22orf29
Function	Could induce apoptosis in a BH3 domain-dependent manner. The direct interaction network of Bcl-2 family members may play a key role in modulation RTL10/BOP intrinsic apoptotic signaling activity.
Cellular Location	Mitochondrion.
Tissue Location	Ubiquitously expressed.

Images



Sample: 293T Cell (Human) Lysate at 40 ug
 Primary: Anti-FBXL3 (AP55821) at 1/300 dilution
 Secondary: IRDye800CW Goat Anti-Rabbit IgG at 1/20000 dilution
 Predicted band size: 39kD
 Observed band size: 45kD

Please note: All products are 'FOR RESEARCH USE ONLY. NOT FOR USE IN DIAGNOSTIC OR THERAPEUTIC PROCEDURES'.